

JMJD1B Antibody

Rabbit Polyclonal

Antigen Affinity Purified

Protein ID NP_057688.2

Catalog No. A300-883A

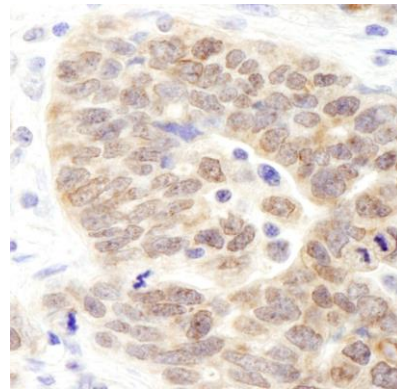
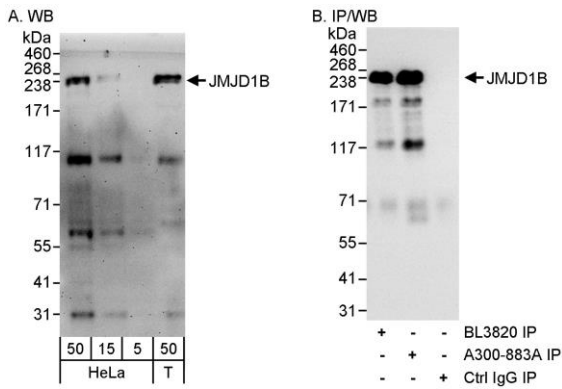
GeneID 51780

Lot No. A300-883A-1



APPLICATIONS	WB, IP, IHC
SPECIES REACTIVITY	Human
PRESUMED REACTIVITY	Based on 100% sequence identity, this antibody is predicted to react with Mouse
AMOUNT	100 µl
CONCENTRATION	200 µg/ml
STORAGE/SHELF LIFE	2 - 8° C / 1 year from date of receipt
PHYSICAL STATE	Liquid
BUFFER	Tris-buffered Saline containing 0.1% BSA and 0.09% Sodium Azide
ISOTYPE	IgG
ORIGIN	USA
PRODUCTION PROCEDURES	<p>Antibody was affinity purified using an epitope specific to JMJD1B immobilized on solid support.</p> <p>The epitope recognized by A300-883A maps to a region between residue 1710 and the C-terminus (residue 1761) of human Jumonji Domain Containing 1B using the numbering given in entry NP_057688.2 (GeneID 51780).</p> <p>Immunoglobulin concentration was determined by extinction coefficient: absorbance at 280 nm of 1.4 equals 1.0 mg of IgG.</p>
APPLICATIONS	<p>Centrifuge tube to remove product from lid. Optimal working dilutions should be determined experimentally by the investigator. Prepare working dilution immediately before use.</p> <p>Western Blot 1:2,000 - 1:10,000</p> <p>Immunoprecipitation 2 - 5 µg/mg lysate</p> <p>Immunohistochemistry 1:100 - 1:500. Epitope retrieval with citrate buffer pH 6.0 is recommended for FFPE tissue sections.</p>
APPLICATION NOTES	<p>Western blot of immunoprecipitates performed using Normal Pig Serum (Cat. No. S100-020), Goat anti-Rabbit Light Chain HRP Conjugate (Cat. No. A120-113P) and 4-8% SDS-PAGE (link to IP-western blot protocol in Additional Info section below).</p> <p>Western blot of lysates performed using standard western blot reagents and 4-8% SDS-PAGE.</p>
IHC HUMAN CONTROLS	Laryngeal Squamous Cell Carcinoma, Ovarian Carcinoma, Prostate Carcinoma
ADDITIONAL INFO	<p>https://www.bethyl.com/product/A300-883A</p> <p>Use the link above to view SDS, a current list of citations, and other product specific information.</p> <p>IP-western blot protocol: https://www.bethyl.com/content/protocol_IP_WB</p>

This document certifies that this product has met all of the quality control standards defined by Bethyl Laboratories, Inc.
Eric McIntush, PhD | Chief Scientific Officer Date: June 21, 2019



Detection of human JMJD1B by western blot and immunoprecipitation. *Samples:* Whole cell lysate from HeLa (5, 15 and 50 µg for WB; 1 mg for IP, 20% of IP loaded) and HEK293T (T; 50 µg) cells. *Antibodies:* Affinity purified rabbit anti-JMJD1B antibody A300-883A used for WB at 0.04 µg/ml (A) and 1 µg/ml (B) and used for IP at 3 µg/mg lysate (B). JMJD1B was also immunoprecipitated by rabbit anti-JMJD1B antibody BL3820, which recognizes an upstream epitope. *Detection:* Chemiluminescence with exposure times of 3 minutes (A) and 30 seconds (B).

Detection of human JMJD1B by immunohistochemistry. *Sample:* FFPE section of human ovarian carcinoma. *Antibody:* Affinity purified rabbit anti-JMJD1B (Cat. No. A300-883A Lot1) used at a dilution of 1:200 (1 µg/ml). *Detection:* DAB