

# SUPT5H Antibody

Rabbit Polyclonal

Antigen Affinity Purified

Protein ID NP\_003160.2

Catalog No. A300-869A

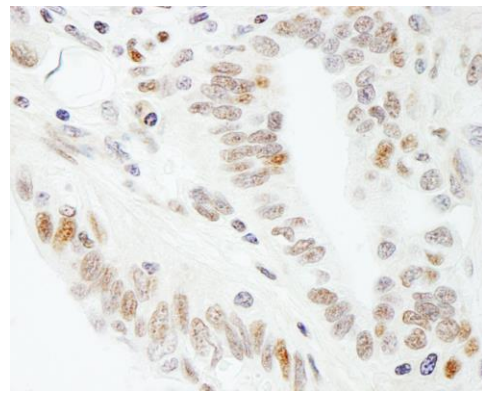
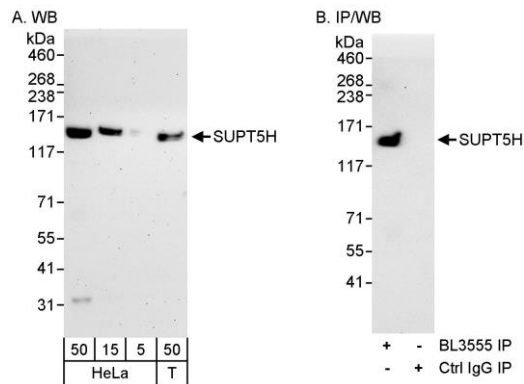
GeneID 6829

Lot No. A300-869A-1



<b>APPLICATIONS</b>	WB, IHC						
<b>SPECIES REACTIVITY</b>	Human						
<b>PRESUMED REACTIVITY</b>	Based on 100% sequence identity, this antibody is predicted to react with Mouse, Chicken and Orangutan						
<b>AMOUNT</b>	100 µl						
<b>CONCENTRATION</b>	1000 µg/ml						
<b>STORAGE/SHELF LIFE</b>	2 - 8° C / 1 year from date of receipt						
<b>PHYSICAL STATE</b>	Liquid						
<b>BUFFER</b>	Tris-citrate/phosphate buffer, pH 7 to 8 containing 0.09% Sodium Azide						
<b>ISOTYPE</b>	IgG						
<b>ORIGIN</b>	USA						
<b>PRODUCTION PROCEDURES</b>	<p>Antibody was affinity purified using an epitope specific to SUPT5H immobilized on solid support.</p> <p>The epitope recognized by A300-869A maps to a region between residue 1040 and the C-terminus (residue 1087) of human Suppressor of Ty 5 Homolog using the numbering given in entry NP_003160.2 (GeneID 6829).</p> <p>Immunoglobulin concentration was determined by extinction coefficient: absorbance at 280 nm of 1.4 equals 1.0 mg of IgG.</p>						
<b>APPLICATIONS</b>	<p>Centrifuge tube to remove product from lid. Optimal working dilutions should be determined experimentally by the investigator. Prepare working dilution immediately before use.</p> <table><tr><td>Western Blot</td><td>1:2,000 - 1:10,000</td></tr><tr><td>Immunoprecipitation</td><td>Not recommended. Use rabbit anti-SUPT5H antibody A300-868A.</td></tr><tr><td>Immunohistochemistry</td><td>1:500 - 1:2,000. Epitope retrieval with citrate buffer pH 6.0 is recommended for FFPE tissue sections.</td></tr></table>	Western Blot	1:2,000 - 1:10,000	Immunoprecipitation	Not recommended. Use rabbit anti-SUPT5H antibody A300-868A.	Immunohistochemistry	1:500 - 1:2,000. Epitope retrieval with citrate buffer pH 6.0 is recommended for FFPE tissue sections.
Western Blot	1:2,000 - 1:10,000						
Immunoprecipitation	Not recommended. Use rabbit anti-SUPT5H antibody A300-868A.						
Immunohistochemistry	1:500 - 1:2,000. Epitope retrieval with citrate buffer pH 6.0 is recommended for FFPE tissue sections.						
<b>APPLICATION NOTES</b>	Western blot of lysates performed using standard western blot reagents and 4-8% SDS-PAGE.						
<b>IHC HUMAN CONTROLS</b>	Breast Carcinoma, Ovarian Carcinoma, Small Cell Lung Cancer						
<b>ADDITIONAL INFO</b>	<p><a href="https://www.bethyl.com/product/A300-869A">https://www.bethyl.com/product/A300-869A</a></p> <p>Use the link above to view SDS, a current list of citations, and other product specific information.</p>						

This document certifies that this product has met all of the quality control standards defined by Bethyl Laboratories, Inc.  
Eric McIntush, PhD | Chief Scientific Officer Date: June 21, 2019



**Detection of human SUPT5H by western blot and immunoprecipitation.** *Samples:* Whole cell lysate from HeLa (5, 15 and 50  $\mu$ g for WB; 1 mg for IP, 20% of IP loaded) and HEK293T (T; 50  $\mu$ g) cells. *Antibodies:* Affinity purified rabbit anti-SUPT5H antibody BL3558 (Cat. No. A300-869A) used for WB at 0.1  $\mu$ g/ml (A) and 1  $\mu$ g/ml (B). SUPT5H was immunoprecipitated by rabbit anti-SUPT5H antibody BL3555 (Cat. No. A300-868A), which recognizes an upstream epitope. *Detection:* Chemiluminescence with exposure times of 3 minutes (A) and 30 seconds (B).

**Detection of human SUPT5H by immunohistochemistry.** *Sample:* FFPE section of human ovarian carcinoma. *Antibody:* Affinity purified rabbit anti-SUPT5H (Cat. No. A300-869A Lot1) used at a dilution of 1:1,000 (1  $\mu$ g/ml). *Detection:* DAB