

# DHX9 Antibody

Rabbit Polyclonal

Antigen Affinity Purified

Protein ID CAA71668.1

Catalog No. A300-855A

GeneID 1660

Lot No. A300-855A-4



<b>APPLICATIONS</b>	WB, IP, IHC
<b>SPECIES REACTIVITY</b>	Human
<b>PRESUMED REACTIVITY</b>	Based on 100% sequence identity, this antibody is predicted to react with Orangutan
<b>AMOUNT</b>	100 µl
<b>CONCENTRATION</b>	200 µg/ml
<b>STORAGE/SHELF LIFE</b>	2 - 8° C / 1 year from date of receipt
<b>PHYSICAL STATE</b>	Liquid
<b>BUFFER</b>	Tris-buffered Saline containing 0.1% BSA and 0.09% Sodium Azide
<b>ISOTYPE</b>	IgG
<b>ORIGIN</b>	USA
<b>PRODUCTION PROCEDURES</b>	Antibody was affinity purified using an epitope specific to DHX9 immobilized on solid support.

The epitope recognized by A300-855A maps to a region between residue 1220 and the C-terminus (residue 1270) of human DEAH (Asp-Glu-Ala-His) Box Polypeptide 9 using the numbering given in entry CAA71668.1 (GeneID 1660).

Immunoglobulin concentration was determined by extinction coefficient: absorbance at 280 nm of 1.4 equals 1.0 mg of IgG.

**APPLICATIONS** Centrifuge tube to remove product from lid. Optimal working dilutions should be determined experimentally by the investigator. Prepare working dilution immediately before use.

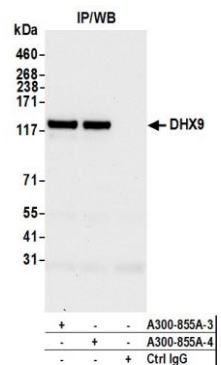
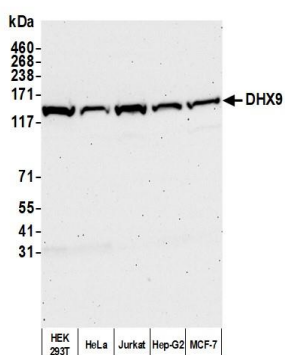
Western Blot	1:2,000 - 1:10,000
Immunoprecipitation	2 - 10 µg/mg lysate
Immunohistochemistry	1:100 to 1:500. Epitope retrieval with citrate buffer pH6.0 is recommended for FFPE tissue sections.

**IHC HUMAN CONTROLS** Breast Carcinoma, Colon Carcinoma, Laryngeal Squamous Cell Carcinoma, Metastatic Lymph Node, Non-Small Cell Lung Cancer, Ovarian Carcinoma, Prostate Carcinoma, Skin Basal Cell Carcinoma, Stomach Adenocarcinoma, Testicular Seminoma

**ADDITIONAL INFO** <https://www.bethyl.com/product/A300-855A>

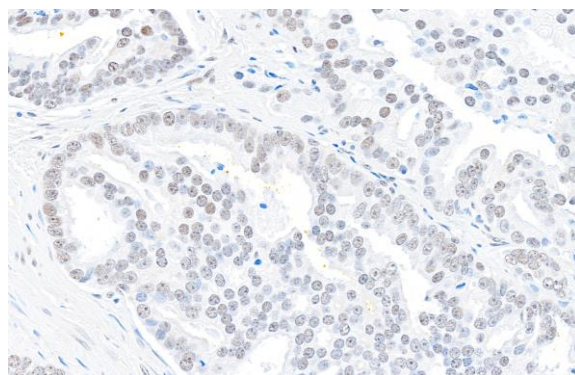
Use the link above to view SDS, a current list of citations, and other product specific information. IP-western blot protocol: [https://www.bethyl.com/content/protocol\\_IP\\_WB](https://www.bethyl.com/content/protocol_IP_WB)

This document certifies that this product has met all of the quality control standards defined by Bethyl Laboratories, Inc.  
Brian McWilliams, PhD Date: August 24, 2021



**Detection of human DHX9 by western blot.** *Samples:* Whole cell lysate (50 µg) from HEK293T, HeLa, Jurkat, Hep-G2, and MCF-7 cells prepared using NETN lysis buffer. *Antibody:* Affinity purified rabbit anti-DHX9 antibody A300-855A (lot A300-855A-4) used for WB at 0.04 µg/ml. *Detection:* Chemiluminescence with an exposure time of 75 seconds.

**Detection of human DHX9 by western blot of immunoprecipitates.** *Samples:* Whole cell lysate (1.0 mg per IP reaction; 20% of IP loaded) from HEK293T cells prepared using NETN lysis buffer. *Antibodies:* Affinity purified rabbit anti-DHX9 antibody (A300-855A-4) used for IP at 6 µg per reaction. DHX9 was also immunoprecipitated by a previous lot of this antibody (A300-855A lot 3). For blotting immunoprecipitated DHX9, A300-855A was used at 0.04 µg/ml. *Detection:* Chemiluminescence with an exposure time of 10 seconds.



**Detection of human DHX9 by immunohistochemistry.** *Sample:* FFPE section of human prostate carcinoma. *Antibody:* Affinity purified rabbit anti-DHX9 (Cat. No. A300-855A Lot4) used at a dilution of 1:200 (1 µg/ml). *Detection:* DAB