

PPP6C Antibody

Rabbit Polyclonal

Antigen Affinity Purified	RefSeq ID	NP_002712.1
Catalog No. A300-844A	Uniprot ID	O00743
Lot No. 2	GeneID	5537

APPLICATIONS	WB, IP
SPECIES REACTIVITY	Human, Mouse
PRESUMED REACTIVITY	Based on 100% sequence identity, this antibody is predicted to react with Rat
AMOUNT	100 µl
CONCENTRATION	1000 µg/ml
STORAGE/SHELF LIFE	2 – 8°C / 1 year from date of receipt
PHYSICAL STATE	Liquid
BUFFER	Tris-citrate/phosphate buffer, pH 7 to 8 containing 0.09% Sodium Azide
ISOTYPE	IgG
ORIGIN	USA
PRODUCTION PROCEDURES	Antibody was affinity purified using an epitope specific to PPP6C immobilized on solid support.

The epitope recognized by A300-844A maps to a region between residue 250 and the C-terminus (residue 305) of human Protein Phosphatase 6, Catalytic Subunit using the numbering given in entry NP_002712.1 (GeneID 5537).

Immunoglobulin concentration was determined using Beer's Law where 1 mg/mL IgG has an A280 of 1.4.

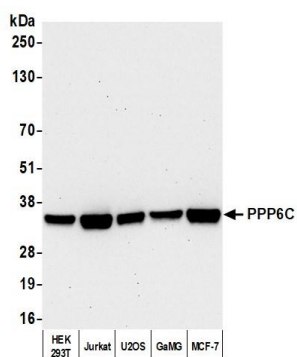
APPLICATIONS Centrifuge tube to remove product from lid. Optimal working dilutions should be determined experimentally by the investigator. Prepare working dilution immediately before use.

Western Blot	1:1000 – 1:10,000
Immunoprecipitation	6 µg/mg lysate

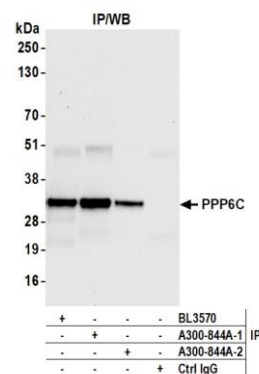
ADDITIONAL INFO <https://www.fortislife.com/p/A300-844A>

Use the link above to view SDS, a current list of citations, and other product specific information.

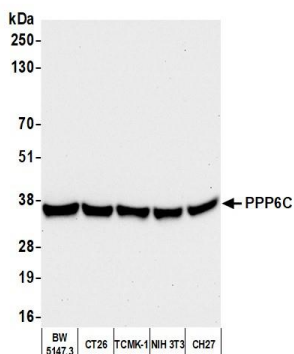
This document certifies that this product has met all of the quality control standards defined by Bethyl Laboratories, Inc.
Michael Spencer, PhD Date: March 20, 2024



Detection of human PPP6C by western blot. *Samples:* Whole cell lysate (25 µg) from HEK293T, Jurkat, U2OS, GaMG, and MCF-7 cells prepared using NETN lysis buffer. *Antibody:* Affinity purified rabbit anti-PPP6C antibody (A300-844A lot 2) used for WB at 0.1 µg/ml. *Detection:* Chemiluminescence with an exposure time of 30 seconds.



Detection of human PPP6C by western blot of immunoprecipitates. *Samples:* Whole cell lysate (1.0 mg per IP reaction; 20% of IP loaded) from HEK293T cells prepared using NETN lysis buffer. *Antibodies:* Affinity purified rabbit anti-PPP6C antibody (A300-844A lot 2) used for IP at 6 µg per reaction. PPP6C was also immunoprecipitated by a previous lot of this antibody (A300-844A lot 1) and a second antibody against a different epitope of PPP6C (BL3570). For blotting immunoprecipitated PPP6C, A300-844A was used at 1 µg/ml. *Detection:* Chemiluminescence with an exposure time of 10 seconds.



Detection of mouse PPP6C by western blot. *Samples:* Whole cell lysate (50 µg) from BW5147.3, CT26, TCMK-1, NIH 3T3, and CH27 cells prepared using NETN lysis buffer. *Antibody:* Affinity purified rabbit anti-PPP6C antibody (A300-844A lot 2) used for WB at 0.1 µg/ml. *Detection:* Chemiluminescence with an exposure time of 10 seconds.