

PPP4R3 Alpha Antibody

Rabbit Polyclonal

Antigen Affinity Purified

Protein ID NP_115949.3

Catalog No. A300-840A

GeneID 55671

Lot No. A300-840A-1



| | |
|------------------------------|--|
| APPLICATIONS | WB, IP, IHC, IHC-IF |
| SPECIES REACTIVITY | Human |
| AMOUNT | 100 µl |
| CONCENTRATION | 200 µg/ml |
| STORAGE/SHELF LIFE | 2 - 8° C / 1 year from date of receipt |
| PHYSICAL STATE | Liquid |
| BUFFER | Tris-buffered Saline containing 0.1% BSA and 0.09% Sodium Azide |
| ISOTYPE | IgG |
| ORIGIN | USA |
| PRODUCTION PROCEDURES | Antibody was affinity purified using an epitope specific to PPP4R3 Alpha immobilized on solid support. |

The epitope recognized by A300-840A maps to a region between residue 770 and the C-terminus (residue 820) of human Protein Phosphatase 4, Regulatory Subunit 3 Alpha (KIAA2010) using the numbering given in entry NP_115949.3 (GeneID 55671).

Immunoglobulin concentration was determined by extinction coefficient: absorbance at 280 nm of 1.4 equals 1.0 mg of IgG.

APPLICATIONS Centrifuge tube to remove product from lid. Optimal working dilutions should be determined experimentally by the investigator. Prepare working dilution immediately before use.

| | |
|--------------------------|---|
| Western Blot | 1:2,000 - 1:10,000 |
| Immunoprecipitation | 2 - 5 µg/mg lysate |
| Immunohistochemistry | 1:100 - 1:500. Epitope retrieval with Tris-EDTA pH 9.0 is recommended for FFPE tissue sections. |
| Immunofluorescence (IHC) | 1:50 - 1:250 |

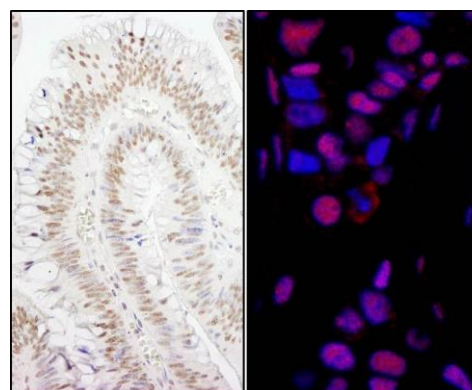
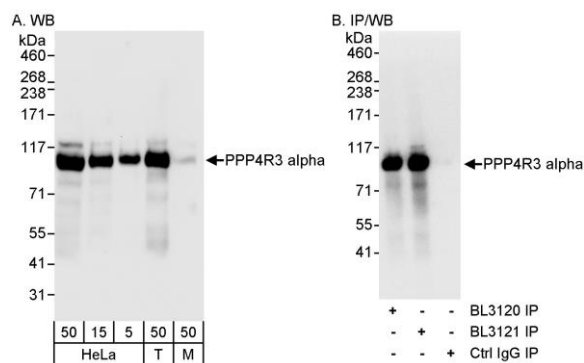
APPLICATION NOTES Western blot of immunoprecipitates performed using Normal Pig Serum (Cat. No. S100-020), Goat anti-Rabbit Light Chain HRP Conjugate (Cat. No. A120-113P) and 4-8% SDS-PAGE (link to IP-western blot protocol in Additional Info section below).

IHC HUMAN CONTROLS Western blot of lysates performed using standard western blot reagents and 4-8% SDS-PAGE. Breast Carcinoma, Colon Carcinoma, Stomach Adenocarcinoma, Testicular Seminoma

IHC MOUSE CONTROLS Renal Cell Carcinoma, Teratoma

ADDITIONAL INFO <https://www.bethyl.com/product/A300-840A>
Use the link above to view SDS, a current list of citations, and other product specific information.
IP-western blot protocol: https://www.bethyl.com/content/protocol_IP_WB

This document certifies that this product has met all of the quality control standards defined by Bethyl Laboratories, Inc.
Eric McIntush, PhD | Chief Scientific Officer Date: June 21, 2019



Detection of human PPP4R3 Alpha by western blot (h&m) and immunoprecipitation (h). *Samples:* Whole cell lysate from HeLa (5, 15 and 50 µg for WB; 1 mg for IP, 20% of IP loaded), HEK293T (T; 50 µg) and mouse NIH 3T3 (M; 50 µg) cells. *Antibodies:* Affinity purified rabbit anti-PPP4R3 alpha antibody BL3121 (Cat. No. A300-840A) used for WB at 0.04 µg/ml (A) and 1 µg/ml (B) and used for IP at 3 µg/mg lysate (B). PPP4R3 alpha was also immunoprecipitated by rabbit anti-PPP4R3 alpha antibody BL3120 (Cat. No. A300-839A), which recognizes an upstream epitope. *Detection:* Chemiluminescence with exposure times of 10 seconds (A) and 0.5 seconds (B).

Detection of human PPP4R3 Alpha by immunohistochemistry. *Sample:* FFPE sections of human colon carcinoma (left) and breast carcinoma (right). *Antibody:* Affinity purified rabbit anti- PPP4R3 Alpha (Cat. No. A300-840A Lot1) used at a dilution of 1:200 (1 µg/ml) and 1:80 (2.5 µg/ml). *Detection:* DAB and Red-fluorescent goat anti-rabbit IgG-heavy and light chain, cross-adsorbed Antibody DyLight® 594 Conjugated used at a dilution of 1:100