

PPP4R3 Alpha Antibody

Rabbit Polyclonal

Antigen Affinity Purified

Protein ID NP_115949.3

Catalog No. A300-839A

GeneID 55671

Lot No. A300-839A-1



APPLICATIONS	IP
SPECIES REACTIVITY	Human
PRESUMED REACTIVITY	Based on 100% sequence identity, this antibody is predicted to react with Mouse, Zebrafish and <i>X. laevis</i>
AMOUNT	100 µl
CONCENTRATION	1000 µg/ml
STORAGE/SHELF LIFE	2 - 8° C / 1 year from date of receipt
PHYSICAL STATE	Liquid
BUFFER	Tris-citrate/phosphate buffer, pH 7 to 8 containing 0.09% Sodium Azide
ISOTYPE	IgG
ORIGIN	USA
PRODUCTION PROCEDURES	Antibody was affinity purified using an epitope specific to PPP4R3 Alpha immobilized on solid support.

The epitope recognized by A300-839A maps to a region between residue 600 and 650 of human Protein Phosphatase 4, Regulatory Subunit 3 Alpha (KIAA2010) using the numbering given in entry NP_115949.3 (GeneID 55671).

Immunoglobulin concentration was determined by extinction coefficient: absorbance at 280 nm of 1.4 equals 1.0 mg of IgG.

APPLICATIONS Centrifuge tube to remove product from lid. Optimal working dilutions should be determined experimentally by the investigator. Prepare working dilution immediately before use.

Western Blot Not recommended. Use rabbit anti-PPP4R3 alpha antibody A300-840A.

Immunoprecipitation 2 - 5 µg/mg lysate

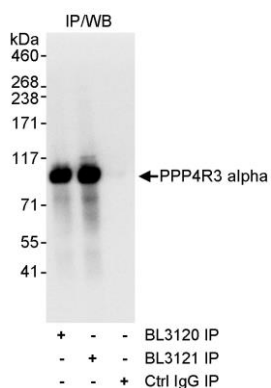
APPLICATION NOTES Western blot of immunoprecipitates performed using Normal Pig Serum (Cat. No. S100-020), Goat anti-Rabbit Light Chain HRP Conjugate (Cat. No. A120-113P) and 4-8% SDS-PAGE (link to IP-western blot protocol in Additional Info section below).

ADDITIONAL INFO <https://www.bethyl.com/product/A300-839A>

Use the link above to view SDS, a current list of citations, and other product specific information.

IP-western blot protocol: https://www.bethyl.com/content/protocol_IP_WB

This document certifies that this product has met all of the quality control standards defined by Bethyl Laboratories, Inc.
Eric McIntush, PhD | Chief Scientific Officer Date: June 21, 2019



Detection of human PPP4R3 Alpha by western blot of immunoprecipitates. *Samples:* Whole cell lysate (1 mg for IP, 20% of IP loaded) from HeLa cells. *Antibodies:* Affinity purified rabbit anti-PPP4R3 alpha antibody BL3120 (Cat. No. A300-839A) used for IP at 3 μ g/mg lysate. PPP4R3 alpha was also immunoprecipitated by rabbit anti-PPP4R3 alpha antibody BL3121 (Cat. No. A300-840A), which recognizes a downstream epitope. For blotting immunoprecipitated PPP4R3 alpha, BL3121 was used at 1 μ g/ml. *Detection:* Chemiluminescence with an exposure time of 0.5 seconds.