

# TPR Antibody

Rabbit Polyclonal

Antigen Affinity Purified

Protein ID NP\_003283.1

Catalog No. A300-826A

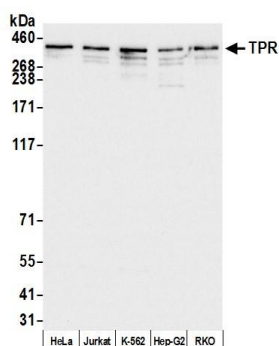
GeneID 7175

Lot No. A300-826A-2

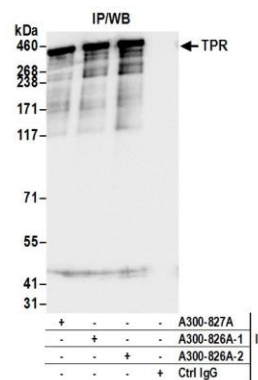


<b>APPLICATIONS</b>	WB, IP
<b>SPECIES REACTIVITY</b>	Human
<b>PRESUMED REACTIVITY</b>	Based on 100% sequence identity, this antibody is predicted to react with Mouse and Rat
<b>AMOUNT</b>	100 µl
<b>CONCENTRATION</b>	200 µg/ml
<b>STORAGE/SHELF LIFE</b>	2 - 8° C / 1 year from date of receipt
<b>PHYSICAL STATE</b>	Liquid
<b>BUFFER</b>	Tris-buffered Saline containing 0.1% BSA and 0.09% Sodium Azide
<b>ISOTYPE</b>	IgG
<b>ORIGIN</b>	USA
<b>PRODUCTION PROCEDURES</b>	<p>Antibody was affinity purified using an epitope specific to TPR immobilized on solid support.</p> <p>The epitope recognized by A300-826A maps to a region between residue 1650 and 1700 of human Translocated Promoter Region Protein using the numbering given in entry NP_003283.1 (GeneID 7175).</p> <p>Immunoglobulin concentration was determined by extinction coefficient: absorbance at 280 nm of 1.4 equals 1.0 mg of IgG.</p>
<b>APPLICATIONS</b>	<p>Centrifuge tube to remove product from lid. Optimal working dilutions should be determined experimentally by the investigator. Prepare working dilution immediately before use.</p> <p>Western Blot                      1:2,000 - 1:10,000</p> <p>Immunoprecipitation          2 - 10 µg/mg lysate</p>
<b>APPLICATION NOTES</b>	<p>Western blot of immunoprecipitates performed using Normal Pig Serum (Cat. No. S100-020), Goat anti-Rabbit Light Chain HRP Conjugate (Cat. No. A120-113P) and 4-8% SDS-PAGE (link to IP-western blot protocol in Additional Info section below).</p> <p>Western blot of lysates performed using standard western blot reagents and 4-8% SDS-PAGE. <a href="https://www.bethyl.com/product/A300-826A">https://www.bethyl.com/product/A300-826A</a></p>
<b>ADDITIONAL INFO</b>	<p>Use the link above to view SDS, a current list of citations, and other product specific information. IP-western blot protocol <a href="https://www.bethyl.com/content/protocol_IP_WB">https://www.bethyl.com/content/protocol_IP_WB</a></p>

This document certifies that this product has met all of the quality control standards defined by Bethyl Laboratories, Inc.  
Eric McIntush, PhD | Chief Scientific Officer Date: July 1, 2019



**Detection of human TPR by western blot.** *Samples:* Whole cell lysate (50 µg) from HeLa, Jurkat, K-562, Hep-G2, and RKO cells prepared using NETN lysis buffer. *Antibody:* Affinity purified rabbit anti-TPR antibody A300-826A (lot A300-826A-2) used for WB at 0.04 µg/ml. *Detection:* Chemiluminescence with an exposure time of 3 seconds.



**Detection of human TPR by western blot of immunoprecipitates.** *Samples:* Whole cell lysate (1.0 mg per IP reaction; 20% of IP loaded) from HeLa cells prepared using NETN lysis buffer. *Antibodies:* Affinity purified rabbit anti-TPR antibody A300-826A (lot A300-826A-2) used for IP at 6 µg per reaction. TPR was also immunoprecipitated by a previous lot of this antibody (lot A300-826A-1) and rabbit anti-TPR antibody A300-827A. For blotting immunoprecipitated TPR, A300-826A was used. *Detection:* Chemiluminescence with an exposure time of 1 second.