

SUPT6H Antibody

Rabbit Polyclonal

Antigen Affinity Purified Protein ID NP_003161.2

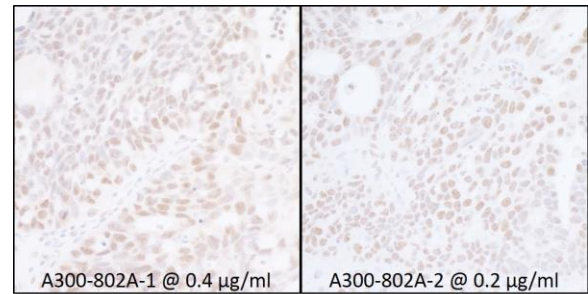
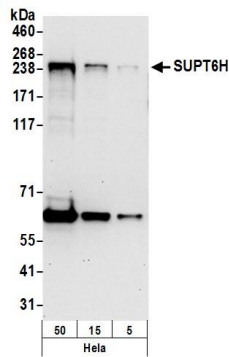
Catalog No. A300-802A GeneID 6830

Lot No. A300-802A-2



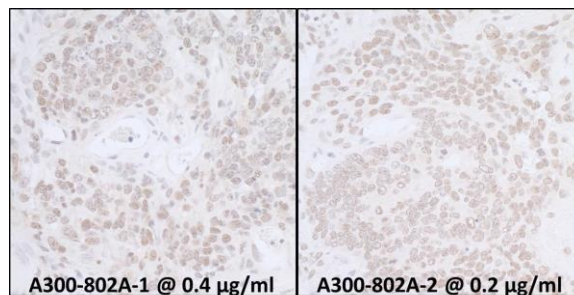
| | | | | | | | |
|------------------------------|---|--------------|--------------------|---------------------|---|----------------------|--|
| APPLICATIONS | WB, IHC | | | | | | |
| SPECIES REACTIVITY | Human, Mouse | | | | | | |
| PRESUMED REACTIVITY | Based on 100% sequence identity, this antibody is predicted to react with <i>D. melanogaster</i> and Zebrafish | | | | | | |
| AMOUNT | 100 µl | | | | | | |
| CONCENTRATION | 200 µg/ml | | | | | | |
| STORAGE/SHELF LIFE | 2 – 8° C / 1 year from date of receipt | | | | | | |
| PHYSICAL STATE | Liquid | | | | | | |
| BUFFER | Tris-buffered Saline containing 0.1% BSA and 0.09% Sodium Azide | | | | | | |
| ISOTYPE | IgG | | | | | | |
| ORIGIN | USA | | | | | | |
| PRODUCTION PROCEDURES | <p>Antibody was affinity purified using an epitope specific to SUPT6H immobilized on solid support.</p> <p>The epitope recognized by A300-802A maps to a region between residue 1050 and 1100 of human Suppressor of Ty 6 Homolog using the numbering given in entry NP_003161.2 (GeneID 6830).</p> <p>Immunoglobulin concentration was determined by extinction coefficient: absorbance at 280 nm of 1.4 equals 1.0 mg of IgG.</p> | | | | | | |
| APPLICATIONS | <p>Centrifuge tube to remove product from lid. Optimal working dilutions should be determined experimentally by the investigator. Prepare working dilution immediately before use.</p> <table><tr><td>Western Blot</td><td>1:2,000 – 1:10,000</td></tr><tr><td>Immunoprecipitation</td><td>Not recommended. Use rabbit anti-SUPT6 antibody A300-801A or A300-803A.</td></tr><tr><td>Immunohistochemistry</td><td>1:200 – 1:1,000. Epitope retrieval with citrate buffer pH 6.0 is recommended for FFPE tissue sections.</td></tr></table> | Western Blot | 1:2,000 – 1:10,000 | Immunoprecipitation | Not recommended. Use rabbit anti-SUPT6 antibody A300-801A or A300-803A. | Immunohistochemistry | 1:200 – 1:1,000. Epitope retrieval with citrate buffer pH 6.0 is recommended for FFPE tissue sections. |
| Western Blot | 1:2,000 – 1:10,000 | | | | | | |
| Immunoprecipitation | Not recommended. Use rabbit anti-SUPT6 antibody A300-801A or A300-803A. | | | | | | |
| Immunohistochemistry | 1:200 – 1:1,000. Epitope retrieval with citrate buffer pH 6.0 is recommended for FFPE tissue sections. | | | | | | |
| APPLICATION NOTES | Western blot of lysates performed using standard western blot reagents and 4-8% SDS-PAGE. | | | | | | |
| IHC HUMAN CONTROLS | Breast Carcinoma, Colon Carcinoma, Ovarian Carcinoma, Small Cell Lung Cancer | | | | | | |
| IHC MOUSE CONTROLS | Squamous Cell Carcinoma, Teratoma | | | | | | |
| ADDITIONAL INFO | <p>https://www.bethyl.com/product/A300-802A</p> <p>Use the link above to view SDS, a current list of citations, and other product specific information.</p> | | | | | | |

This document certifies that this product has met all of the quality control standards defined by Bethyl Laboratories, Inc.
Eric McIntush, PhD | Chief Scientific Officer Date: June 21, 2019



Detection of human SUPT6H by western blot. *Samples:* Whole cell lysate (5, 15 and 50 µg) from HeLa cells prepared using NETN lysis buffer. *Antibody:* Affinity purified rabbit anti-SUPT6H antibody A300-802A (lot A300-802A-2) used for WB at 0.1 µg/ml. *Detection:* Chemiluminescence with an exposure time of 30 seconds.

Detection of human SUPT6H by immunohistochemistry. *Samples:* FFPE serial sections of human ovarian carcinoma. *Antibody:* Affinity purified rabbit anti-SUPT6H A300-802A-1 used at a dilution of 0.4µg/ml (left) and A300-802A-2 used at a dilution of 0.2µg/ml (right). *Detection:* DAB



Detection of mouse SUPT6H by immunohistochemistry. *Samples:* FFPE serial sections of mouse teratoma. *Antibody:* Affinity purified rabbit anti-SUPT6H A300-802A-1 used at a dilution of 0.4µg/ml (left) and A300-802A-2 used at a dilution of 0.2µg/ml (right). *Detection:* DAB