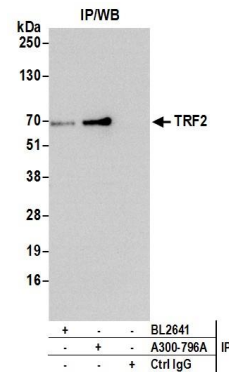


Detection of human TRF2 by western blot. *Samples:* Whole cell lysate (50 µg) from HeLa, HEK293T, and Jurkat cells prepared using NETN lysis buffer. *Antibody:* Affinity purified rabbit anti-TRF2 antibody A300-796A (lot A300-796A-3) used for WB at 0.1 µg/ml. *Detection:* Chemiluminescence with an exposure time of 75 seconds.



Detection of human TRF2 by western blot of immunoprecipitates. *Samples:* Whole cell lysate (1.0 mg per IP reaction; 20% of IP loaded) from HeLa cells prepared using NETN lysis buffer. *Antibodies:* Affinity purified rabbit anti-TRF2 antibody A300-796A (lot A300-796A-3) used for IP at 3 µg per reaction. TRF2 was also immunoprecipitated by rabbit anti-TRF2 antibody BL2641. For blotting immunoprecipitated TRF2, A300-796A was used at 1 µg/ml. *Detection:* Chemiluminescence with an exposure time of 3 minutes.