

# DC8 Antibody

Rabbit Polyclonal

Antigen Affinity Purified Protein ID NP\_056286.2  
Catalog No. A300-795A GeneID 25936  
Lot No. A300-795A-2



**APPLICATIONS** WB, IP  
**SPECIES REACTIVITY** Human  
**AMOUNT** 100 µl  
**CONCENTRATION** 1000 µg/ml  
**STORAGE/SHELF LIFE** 2 – 8° C / 1 year from date of receipt  
**PHYSICAL STATE** Liquid  
**BUFFER** Tris-citrate/phosphate buffer, pH 7 to 8 containing 0.09% Sodium Azide  
**ISOTYPE** IgG  
**ORIGIN** USA  
**PRODUCTION PROCEDURES** Antibody was affinity purified using an epitope specific to DC8 immobilized on solid support.

The epitope recognized by A300-795A maps to a region between residue 230 and the C-terminus (residue 281) of human DC8 (C1orf48) using the numbering given in entry NP\_056286.2 (GeneID 25936).

Immunoglobulin concentration was determined by extinction coefficient: absorbance at 280 nm of 1.4 equals 1.0 mg of IgG.

**APPLICATIONS** Centrifuge tube to remove product from lid. Optimal working dilutions should be determined experimentally by the investigator. Prepare working dilution immediately before use.

Western Blot 1:2,000 – 1:10,000

Immunoprecipitation 2 – 10 µg/mg lysate

**APPLICATION NOTES** Western blot of immunoprecipitates performed using Normal Pig Serum (Cat. No. S100-020), Goat anti-Rabbit Light Chain HRP Conjugate (Cat. No. A120-113P) and 4-20% SDS-PAGE (link to IP-western blot protocol in Additional Info section below).

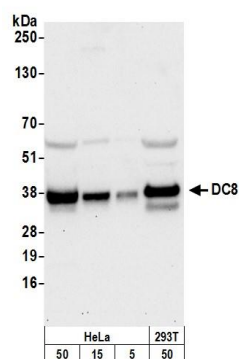
Western blot of lysates performed using standard western blot reagents and 4-20% SDS-PAGE.

**ADDITIONAL INFO** <https://www.bethyl.com/product/A300-795A>

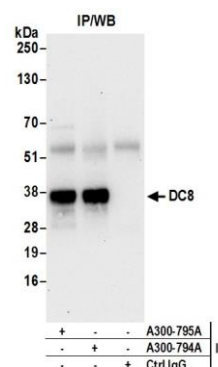
Use the link above to view SDS, a current list of citations, and other product specific information.

IP-western blot protocol: [https://www.bethyl.com/content/protocol\\_IP\\_WB](https://www.bethyl.com/content/protocol_IP_WB)

This document certifies that this product has met all of the quality control standards defined by Bethyl Laboratories, Inc.  
Eric McIntush, PhD | Chief Scientific Officer Date: June 21, 2019



**Detection of human DC8 by western blot.** *Samples:* Whole cell lysate from HeLa (5, 15 and 50 µg), and HEK293T (50 µg) cells prepared using NETN lysis buffer. *Antibody:* Affinity purified rabbit anti-DC8 antibody A300-795A (lot A300-795A-2) used for WB at 0.1 µg/ml. *Detection:* Chemiluminescence with an exposure time of 30 seconds.



**Detection of human DC8 by western blot of immunoprecipitates.** *Samples:* Whole cell lysate (0.5 or 1.0 mg per IP reaction; 20% of IP loaded) from HeLa cells prepared using NETN lysis buffer. *Antibodies:* Affinity purified rabbit anti-DC8 antibody A300-795A (lot A300-795A-2) used for IP at 6 µg per reaction. DC8 was also immunoprecipitated by rabbit anti-DC8 antibody A300-794A. For blotting immunoprecipitated DC8, A300-795A was used at 1 µg/ml. *Detection:* Chemiluminescence with an exposure time of 30 seconds.