

TRIP1 /SUG1 Antibody

Rabbit Polyclonal

Antigen Affinity Purified

Protein ID NP_002796.4

Catalog No. A300-792A

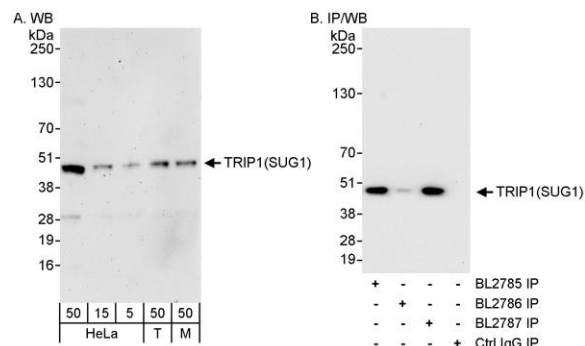
GeneID 5705

Lot No. A300-792A-1



APPLICATIONS	WB, IP
SPECIES REACTIVITY	Human, Mouse
PRESUMED REACTIVITY	Based on 100% sequence identity, this antibody is predicted to react with Rat, D. melanogaster, X. laevis, Bovine and Pig
AMOUNT	100 µl
CONCENTRATION	200 µg/ml
STORAGE/SHELF LIFE	2 – 8° C / 1 year from date of receipt
PHYSICAL STATE	Liquid
BUFFER	Tris-buffered Saline containing 0.1% BSA and 0.09% Sodium Azide
ISOTYPE	IgG
ORIGIN	USA
PRODUCTION PROCEDURES	Antibody was affinity purified using an epitope specific to TRIP1 /SUG1 immobilized on solid support. The epitope recognized by A300-792A maps to a region between residue 350 and 400 of human Thyroid Receptor Interactor 1 using the numbering given in entry NP_002796.4 (GeneID 5705). Immunoglobulin concentration was determined by extinction coefficient: absorbance at 280 nm of 1.4 equals 1.0 mg of IgG.
APPLICATIONS	Centrifuge tube to remove product from lid. Optimal working dilutions should be determined experimentally by the investigator. Prepare working dilution immediately before use. Western Blot 1:2,000 – 1:10,000 Immunoprecipitation 2 – 5 µg/mg lysate
APPLICATION NOTES	Western blot of immunoprecipitates performed using Normal Pig Serum (Cat. No. S100-020), Goat anti-Rabbit Light Chain HRP Conjugate (Cat. No. A120-113P) and 4-20% SDS-PAGE (link to IP-western blot protocol in Additional Info section below). Western blot of lysates performed using standard western blot reagents and 4-20% SDS-PAGE.
ADDITIONAL INFO	https://www.bethyl.com/product/A300-792A Use the link above to view SDS, a current list of citations, and other product specific information. IP-western blot protocol: https://www.bethyl.com/content/protocol_IP_WB

This document certifies that this product has met all of the quality control standards defined by Bethyl Laboratories, Inc.
Eric McIntush, PhD | Chief Scientific Officer Date: June 21, 2019



Detection of human and mouse TRIP1(SUG1) by western blot (h&m) and immunoprecipitation (h). *Samples:* Whole cell lysate from HeLa (5, 15 and 50 µg for WB; 1 mg for IP, 20% of IP loaded), HEK293T (T; 50 µg) and mouse NIH 3T3 (M; 50 µg) cells. *Antibodies:* Affinity purified rabbit anti-TRIP1(SUG1) antibody BL2787 (Cat. No. A300-792A) used for WB at 0.04 µg/ml (A) and at 1 µg/ml (B) and used for IP at 3 µg/mg lysate (B). TRIP1(SUG1) was also immunoprecipitated by rabbit anti-TRIP1(SUG1) antibodies BL2785 (Cat. No. A300-791A) and BL2786. *Detection:* Chemiluminescence with exposure times of 3 minutes (A) and 30 seconds (B).