

TRIP1 /SUG1 Antibody

Rabbit Polyclonal

Antigen Affinity Purified

Protein ID NP_002796.4

Catalog No. A300-791A

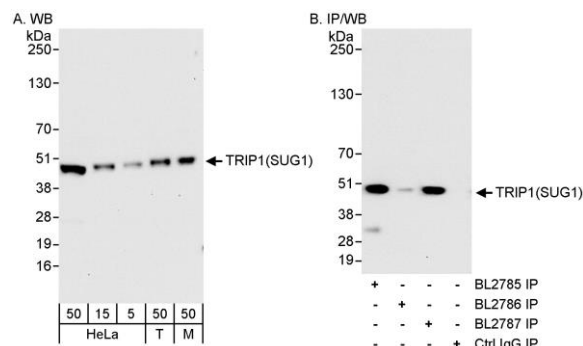
GeneID 5705

Lot No. A300-791A-1

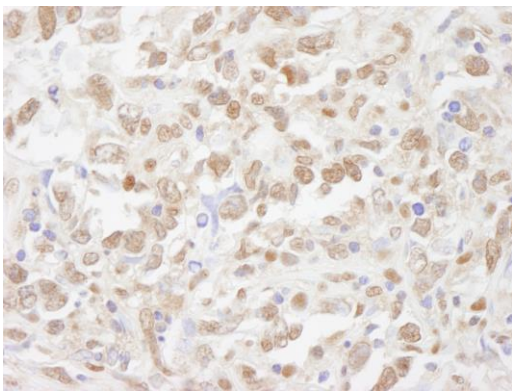


APPLICATIONS	WB, IP, IHC
SPECIES REACTIVITY	Human, Mouse
PRESUMED REACTIVITY	Based on 100% sequence identity, this antibody is predicted to react with Rat, Bovine and Pig
AMOUNT	100 µl
CONCENTRATION	200 µg/ml
STORAGE/SHELF LIFE	2 – 8° C / 1 year from date of receipt
PHYSICAL STATE	Liquid
BUFFER	Tris-buffered Saline containing 0.1% BSA and 0.09% Sodium Azide
ISOTYPE	IgG
ORIGIN	USA
PRODUCTION PROCEDURES	<p>Antibody was affinity purified using an epitope specific to TRIP1 /SUG1 immobilized on solid support.</p> <p>The epitope recognized by A300-791A maps to a region between residue 1 and 50 of human Thyroid Receptor Interactor 1 using the numbering given in entry NP_002796.4 (GeneID 5705).</p> <p>Immunoglobulin concentration was determined by extinction coefficient: absorbance at 280 nm of 1.4 equals 1.0 mg of IgG.</p>
APPLICATIONS	<p>Centrifuge tube to remove product from lid. Optimal working dilutions should be determined experimentally by the investigator. Prepare working dilution immediately before use.</p> <p>Western Blot 1:2,000 – 1:10,000</p> <p>Immunoprecipitation 2 – 5 µg/mg lysate</p> <p>Immunohistochemistry 1:100 – 1:500. Epitope retrieval with citrate buffer pH 6.0 is recommended for FFPE tissue sections.</p>
APPLICATION NOTES	<p>Western blot of immunoprecipitates performed using Normal Pig Serum (Cat. No. S100-020), Goat anti-Rabbit Light Chain HRP Conjugate (Cat. No. A120-113P) and 4-20% SDS-PAGE (link to IP-western blot protocol in Additional Info section below).</p> <p>Western blot of lysates performed using standard western blot reagents and 4-20% SDS-PAGE.</p>
IHC HUMAN CONTROLS	Bone Marrow-Metastatic Carcinoma, Breast Carcinoma, Metastatic Lymph Node, Ovarian Carcinoma, Pancreatic Islet Cell Tumor, Prostate Carcinoma, Testicular Seminoma
IHC MOUSE CONTROLS	Squamous Cell Carcinoma
ADDITIONAL INFO	<p>https://www.bethyl.com/product/A300-791A</p> <p>Use the link above to view SDS, a current list of citations, and other product specific information.</p> <p>IP-western blot protocol: https://www.bethyl.com/content/protocol_IP_WB</p>

This document certifies that this product has met all of the quality control standards defined by Bethyl Laboratories, Inc.
Eric McIntush, PhD | Chief Scientific Officer Date: June 21, 2019



Detection of human and mouse TRIP1(SUG1) by western blot (h&m) and immunoprecipitation (h). *Samples:* Whole cell lysate from HeLa (5, 15 and 50 µg for WB; 1 mg for IP, 20% of IP loaded), HEK293T (T; 50 µg) and mouse NIH 3T3 (M; 50 µg) cells. *Antibodies:* Affinity purified rabbit anti-TRIP1(SUG1) antibody BL2785 (Cat. No. A300-791A) used for WB at 0.04 µg/ml (A) and at 1 µg/ml (B) and used for IP at 3 µg/mg lysate (B). TRIP1(SUG1) was also immunoprecipitated by rabbit anti-TRIP1(SUG1) antibodies BL2786 and BL2787 (Cat. No. A300-792A). *Detection:* Chemiluminescence with exposure times of 30 seconds (A and B).



Detection of human TRIP1(SUG1) by immunohistochemistry. *Sample:* FFPE section of human metastatic lymph node. *Antibody:* Affinity purified rabbit anti- TRIP1(SUG1) (Cat. No. A300-791A Lot1) used at a dilution of 1:200 (1 µg/ml). *Detection:* DAB