

ZWINT-1 Antibody

Rabbit Polyclonal

Antigen Affinity Purified

Protein ID NP_008988.2

Catalog No. A300-781A

GeneID 11130

Lot No. A300-781A-1



APPLICATIONS	WB, IP, ICC-IF
SPECIES REACTIVITY	Human
AMOUNT	100 µl
CONCENTRATION	200 µg/ml
STORAGE/SHELF LIFE	2 - 8° C / 1 year from date of receipt
PHYSICAL STATE	Liquid
BUFFER	Tris-buffered Saline containing 0.1% BSA and 0.09% Sodium Azide
ISOTYPE	IgG
ORIGIN	USA
PRODUCTION PROCEDURES	Antibody was affinity purified using an epitope specific to ZWINT-1 immobilized on solid support.

The epitope recognized by A300-781A maps to a region between residue 225 and the C-terminus (residue 277) of human ZW10 Interactor-1 using the numbering given in entry NP_008988.2 (GeneID 11130).

Immunoglobulin concentration was determined by extinction coefficient: absorbance at 280 nm of 1.4 equals 1.0 mg of IgG.

APPLICATIONS Centrifuge tube to remove product from lid. Optimal working dilutions should be determined experimentally by the investigator. Prepare working dilution immediately before use.

Western Blot 1:2,000 - 1:10,000

Immunoprecipitation 2 - 5 µg/mg lysate

Immunofluorescence (ICC) 1:50 - 1:250. Formaldehyde fixation is recommended. Permeabilization with Triton-X 100 is recommended for formaldehyde-fixed cells.

APPLICATION NOTES Western blot of immunoprecipitates performed using Normal Pig Serum (Cat. No. S100-020), Goat anti-Rabbit Light Chain HRP Conjugate (Cat. No. A120-113P) and 4-20% SDS-PAGE (link to IP-western blot protocol in Additional Info section below).

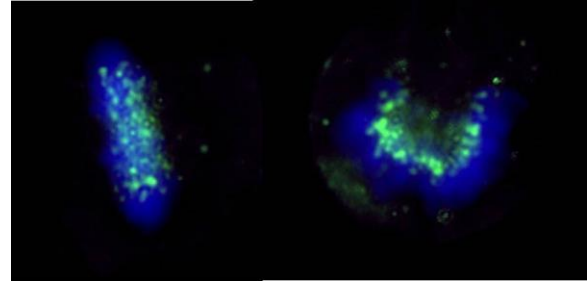
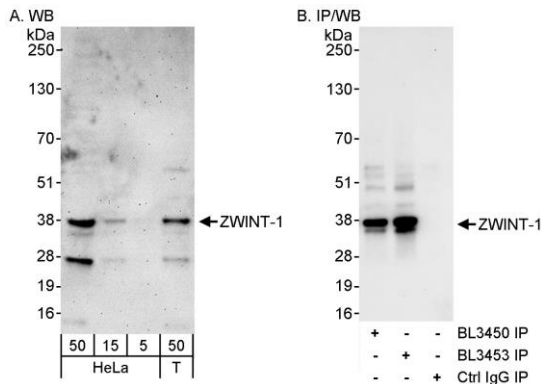
Western blot of lysates performed using standard western blot reagents and 4-20% SDS-PAGE.

IHC HUMAN CONTROLS Testis, HeLa Cells

ADDITIONAL INFO <https://www.bethyl.com/product/A300-781A>

Use the link above to view SDS, a current list of citations, and other product specific information. IP-western blot protocol: https://www.bethyl.com/content/protocol_IP_WB

This document certifies that this product has met all of the quality control standards defined by Bethyl Laboratories, Inc.
Eric McIntush, PhD | Chief Scientific Officer Date: June 21, 2019



Detection of human ZWINT-1 by western blot and immunoprecipitation. *Samples:* Whole cell lysate from HeLa (5, 15 and 50 µg for WB; 1 mg for IP, 20% of IP loaded) and HEK293T (T; 50 µg) cells. *Antibodies:* Affinity purified rabbit anti-ZWINT-1 antibody BL3453 (Cat. No. A300-781A) used for WB at 0.04 µg/ml (A) and at 1 µg/ml (B) and used for IP at 3 µg/mg lysate (B). ZWINT-1 was also immunoprecipitated by rabbit anti-ZWINT-1 antibody BL3450 (Cat. No. A300-780A). *Detection:* Chemiluminescence with exposure times of 3 minutes (A) and 30 seconds (B).

Detection of human ZWINT-1 by immunocytochemistry. *Sample:* formaldehyde-fixed HeLa cells. *Antibody:* Affinity purified rabbit anti-ZWINT-1 (Cat. No. A300-781A Lot1) used at a dilution of 1:200 (1 µg/ml). *Detection:* Green fluorescent goat anti-rabbit IgG highly cross-adsorbed Antibody FITC conjugated (Cat. No. A120-501F) used at a dilution of 1:100 (right).