

Phospho KAP-1 (S824) Antibody

Rabbit Polyclonal

Antigen Affinity Purified Protein ID NP_005753.1
Catalog No. A300-767A GeneID 10155
Lot No. A300-767A-5



APPLICATIONS	WB, IP, IHC, ICC, ICC-IF
SPECIES REACTIVITY	Human, Mouse
AMOUNT	100 µl
CONCENTRATION	200 µg/ml
STORAGE/SHELF LIFE	2 – 8° C / 1 year from date of receipt
PHYSICAL STATE	Liquid
BUFFER	Tris-buffered Saline containing 0.1% BSA and 0.09% Sodium Azide
ISOTYPE	IgG
ORIGIN	USA
PRODUCTION PROCEDURES	Antibody was affinity purified using an epitope specific to Phospho KAP-1 (S824) immobilized on solid support.

Immunogen was a synthetic phosphorylated peptide, which represented a portion of human KRAB-Associated Protein 1 surrounding Serine 824 according to the numbering given in entry NP_005753.1 (GeneID 10155).

Immunoglobulin concentration was determined by extinction coefficient: absorbance at 280 nm of 1.4 equals 1.0 mg of IgG.

APPLICATIONS Centrifuge tube to remove product from lid. Optimal working dilutions should be determined experimentally by the investigator. Prepare working dilution immediately before use.

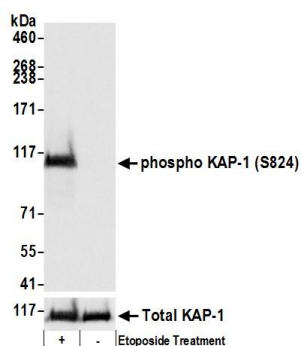
Western Blot	1:2,000 – 1:10,000
Immunoprecipitation	2 – 10 µg/mg lysate
Immunohistochemistry	1:500 to 1:2,000. Epitope retrieval with citrate buffer pH6.0 is recommended for FFPE tissue sections.
Immunocytochemistry	1:200 – 1:1,000
Immunofluorescence (ICC)	1:200 – 1:1,000

APPLICATION NOTES Western blot of immunoprecipitates performed using Normal Pig Serum (Cat. No. S100-020), Goat anti-Rabbit Light Chain HRP Conjugate (Cat. No. A120-113P) and 4-8% SDS-PAGE (link to IP-western blot protocol in Additional Info section below).

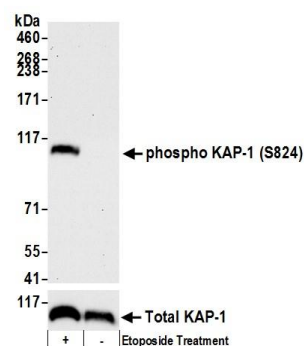
IHC HUMAN CONTROLS Western blot of lysates performed using standard western blot reagents and 4-8% SDS-PAGE. Breast Carcinoma, Non-Small Cell Lung Cancer

ADDITIONAL INFO <https://www.bethyl.com/product/A300-767A>
Use the link above to view SDS, a current list of citations, and other product specific information. IP-western blot protocol https://www.bethyl.com/content/protocol_IP_WB

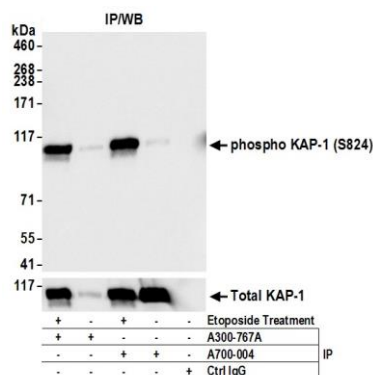
This document certifies that this product has met all of the quality control standards defined by Bethyl Laboratories, Inc.
Eric McIntush, PhD | Chief Scientific Officer Date: June 28, 2019



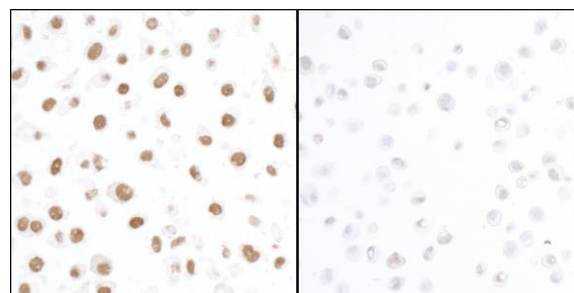
Detection of human Phospho KAP-1 (S824) by western blot. *Samples:* Whole cell lysate (50 µg) from HEK293T cells treated with 100 µM etoposide (+) or mock treated (-). *Antibodies:* Affinity purified rabbit anti-Phospho KAP-1 (S824) antibody A300-767A (lot A300-767A-5) used for WB at 0.04 µg/ml. *Detection:* Chemiluminescence with an exposure time of 1 second. Lower panel shows western blot for total KAP-1 using affinity purified rabbit anti-KAP-1 antibody A300-274A at 0.1 µg/ml.



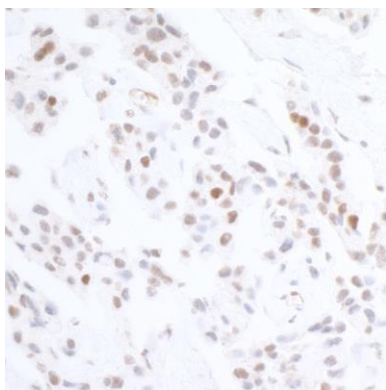
Detection of mouse Phospho KAP-1 (S824) by western blot. *Samples:* Whole cell lysate (15 µg) from NIH 3T3 cells treated with 100 µM etoposide (+) or mock treated (-). *Antibodies:* Affinity purified rabbit anti-Phospho KAP-1 (S824) antibody A300-767A (lot A300-767A-5) used for WB at 0.04 µg/ml. *Detection:* Chemiluminescence with an exposure time of 30 seconds. Lower panel shows western blot for total KAP-1 using rabbit anti-KAP-1 recombinant monoclonal antibody A700-014 at 1:1000.



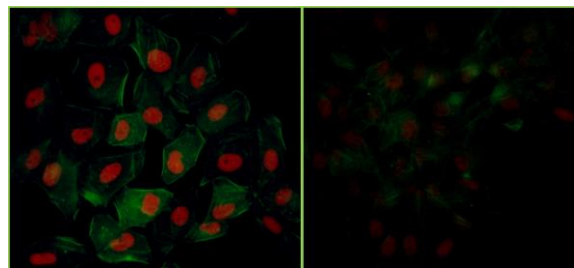
Detection of human Phospho KAP-1 (S824) by western blot of immunoprecipitates. *Samples:* Whole cell lysate (1 mg for IP; 20% of IP loaded) from HEK293T cells treated with 100 µM etoposide (+) or mock treated (-). *Antibodies:* Rabbit anti-Phospho KAP-1 (S824) A300-767A (lot A300-767A-5) and rabbit anti-KAP-1 recombinant monoclonal antibody A700-014 used for IP at 6 µg/mg lysate. For blotting immunoprecipitated Phospho KAP-1 (S824), A300-767A was used at 0.04 µg/ml. To examine total KAP-1, the blot was stripped and then blotted with A700-014A at 1:1000 (lower panel). *Detection:* Chemiluminescence with an exposure time of 1 second.



Detection of human Phospho KAP-1 (S824) by immunocytochemistry. *Samples:* FFPE serial sections of asynchronous HeLa cells treated with etoposide (left) and untreated HeLa cells (right). *Antibody:* Affinity purified rabbit anti-Phospho KAP-1 (S824) (Cat. No. A300-767A lot 5) used at a dilution of 1:1000 (0.2 µg/ml). *Detection:* DAB



Detection of human Phospho Kap1 (S824) by immunohistochemistry. *Sample:* FFPE serial section of human lung cancer (Cat. No. A300-767A lot 5) used at a dilution of 1:1000 (0.2 µg/ml). *Detection:* DAB



Detection of human Phospho KAP-1 (S824) by immunocytochemistry. *Samples:* NBF-fixed asynchronous HeLa cells grown in chambered microscope slides and treated with etoposide (left) or untreated (right). *Antibody:* Affinity purified rabbit anti-Phospho KAP-1 (S824) (Cat. No. A300-767A lot 3) used at a dilution of 1:200 (1 µg/ml). *Detection:* Red fluorescent anti-rabbit IgG-DyLight® 594 conjugated used at a dilution of 1:100.