

Atrophin 1 Antibody

Rabbit Polyclonal

Antigen Affinity Purified

Protein ID NP_001007027.1

Catalog No. A300-753A

GeneID 1822

Lot No. A300-753A-2



APPLICATIONS	WB, IP
SPECIES REACTIVITY	Human
PRESUMED REACTIVITY	Based on 100% sequence identity, this antibody is predicted to react with Mouse, Rat and Chimpanzee
AMOUNT	100 µl
CONCENTRATION	1000 µg/ml
STORAGE/SHELF LIFE	2 - 8° C / 1 year from date of receipt
PHYSICAL STATE	Liquid
BUFFER	Tris-citrate/phosphate buffer, pH 7 to 8 containing 0.09% Sodium Azide
ISOTYPE	IgG
ORIGIN	USA
PRODUCTION PROCEDURES	Antibody was affinity purified using an epitope specific to Atrophin 1 immobilized on solid support.

The epitope recognized by A300-753A maps to a region between residue 1150 and the C-terminus (residue 1190) of human Atrophin 1 using the numbering given in entry NP_001007027.1 (GeneID 1822).

Immunoglobulin concentration was determined by extinction coefficient: absorbance at 280 nm of 1.4 equals 1.0 mg of IgG.

APPLICATIONS Centrifuge tube to remove product from lid. Optimal working dilutions should be determined experimentally by the investigator. Prepare working dilution immediately before use.

Western Blot 1:500 – 1:2,500

Immunoprecipitation 2 – 5 µg/mg lysate

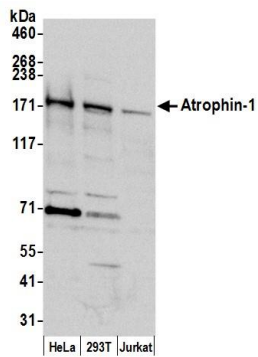
APPLICATION NOTES Western blot of immunoprecipitates performed using Normal Pig Serum (Cat. No. S100-020), Goat anti-Rabbit Light Chain HRP Conjugate (Cat. No. A120-113P) and 4-8% SDS-PAGE (link to IP-western blot protocol in Additional Info section below).

Western blot of lysates performed using standard western blot reagents and 4-8% SDS-PAGE.

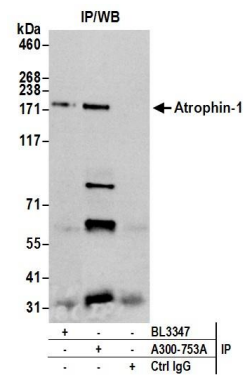
ADDITIONAL INFO <https://www.bethyl.com/product/A300-753A>

Use the link above to view SDS, a current list of citations, and other product specific information. IP-western blot protocol: https://www.bethyl.com/content/protocol_IP_WB

This document certifies that this product has met all of the quality control standards defined by Bethyl Laboratories, Inc.
Eric McIntush, PhD | Chief Scientific Officer Date: June 21, 2019



Detection of human Atrophin 1 by western blot. *Samples:* Whole cell lysate (50 μ g) from HeLa, HEK293T, and Jurkat cells prepared using NETN lysis buffer. *Antibody:* Affinity purified rabbit anti-Atrophin 1 antibody A300-753A (lot A300-753A-2) used for WB at 1 μ g/ml. *Detection:* Chemiluminescence with an exposure time of 30 seconds.



Detection of human Atrophin 1 by western blot of immunoprecipitates. *Samples:* Whole cell lysate (1.0 mg per IP reaction; 20% of IP loaded) from HeLa cells prepared using NETN lysis buffer. *Antibodies:* Affinity purified rabbit anti-Atrophin 1 antibody A300-753A (lot A300-753A-2) used for IP at 3 μ g per reaction. Atrophin 1 was also immunoprecipitated by rabbit anti-Atrophin 1 antibody BL3347. For blotting immunoprecipitated Atrophin 1, A300-753A was used at 1 μ g/ml. *Detection:* Chemiluminescence with an exposure time of 3 minutes.