

# RPL7 Antibody

Rabbit Polyclonal

Antigen Affinity Purified	RefSeq ID	NP_000962.2
Catalog No. A300-741A	Uniprot ID	P18124
Lot No. 4	GeneID	6129

---

<b>APPLICATIONS</b>	WB, IP, IHC
<b>SPECIES REACTIVITY</b>	Human, Mouse
<b>PRESUMED REACTIVITY</b>	Based on 100% sequence identity, this antibody is predicted to react with Rat, Chicken, Bovine and Orangutan
<b>AMOUNT</b>	100 µl
<b>CONCENTRATION</b>	200 µg/ml
<b>STORAGE/SHELF LIFE</b>	2 – 8°C / 1 year from date of receipt
<b>PHYSICAL STATE</b>	Liquid
<b>BUFFER</b>	Tris-buffered Saline containing 0.1% BSA and 0.09% Sodium Azide
<b>ISOTYPE</b>	IgG
<b>ORIGIN</b>	USA
<b>PRODUCTION PROCEDURES</b>	Antibody was affinity purified using an epitope specific to RPL7 immobilized on solid support.

The epitope recognized by A300-741A maps to a region between residue 200 and the C-terminus (residue 248) of human Ribosomal Protein L7 using the numbering given in entry NP\_000962.2 (GeneID 6129).

Immunoglobulin concentration was determined by extinction coefficient: absorbance at 280 nm of 1.4 equals 1.0 mg of IgG.

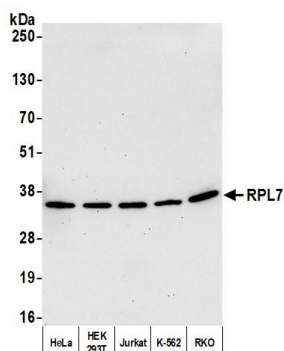
<b>APPLICATIONS</b>	Centrifuge tube to remove product from lid. Optimal working dilutions should be determined experimentally by the investigator. Prepare working dilution immediately before use.
	Western Blot 1:2,000 – 1:10,000
	Immunoprecipitation 2 – 10 µg/mg lysate
	Immunohistochemistry 1:200 to 1:1000. Epitope retrieval with citrate buffer pH6.0 is recommended for FFPE tissue sections.

<b>IHC HUMAN CONTROLS</b>	Breast Carcinoma, Non-Small Cell Lung Cancer, Ovarian Carcinoma, Prostate Carcinoma
---------------------------	---

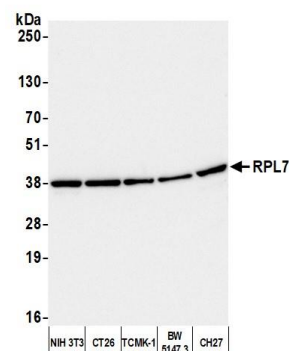
<b>IHC MOUSE CONTROLS</b>	Kidney, Renal Cell Carcinoma, Teratoma
---------------------------	--

<b>ADDITIONAL INFO</b>	<a href="https://www.fortislife.com/p/A300-741A">https://www.fortislife.com/p/A300-741A</a> Use the link above to view SDS, a current list of citations, and other product specific information.
------------------------	---

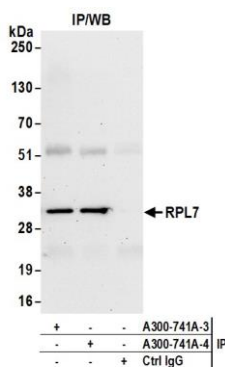
This document certifies that this product has met all of the quality control standards defined by Bethyl Laboratories, Inc.  
Michael Spencer, PhD Date: August 25, 2023



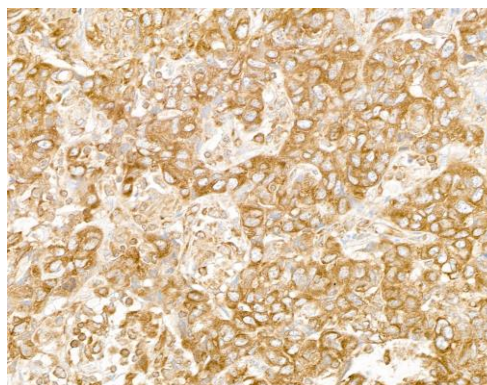
**Detection of human RPL7 by western blot.** *Samples:* Whole cell lysate (10 µg) from HeLa, HEK293T, Jurkat, K-562, and RKO cells prepared using NETN lysis buffer. *Antibody:* Affinity purified rabbit anti-RPL7 antibody (A300-741A lot 4) used for WB at 0.04 µg/ml. *Detection:* Chemiluminescence with an exposure time of 30 seconds.



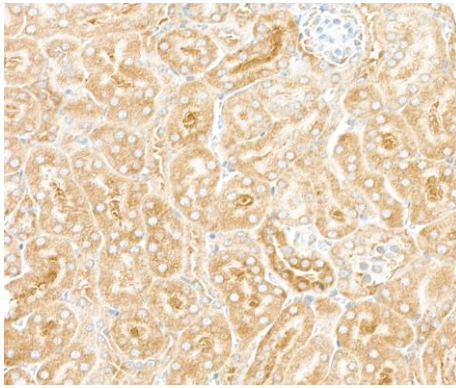
**Detection of mouse RPL7 by western blot.** *Samples:* Whole cell lysate (25 µg) from NIH 3T3, CT26, TCMK-1, BW5147.3, and CH27 cells prepared using NETN lysis buffer. *Antibody:* Affinity purified rabbit anti-RPL7 antibody (A300-741A lot 4) used for WB at 0.04 µg/ml. *Detection:* Chemiluminescence with an exposure time of 3 seconds.



**Detection of human RPL7 by western blot of immunoprecipitates.** *Samples:* Whole cell lysate (1.0 mg per IP reaction; 20% of IP loaded) from HEK293T cells prepared using NETN lysis buffer. *Antibodies:* Affinity purified rabbit anti-RPL7 antibody (A300-741A lot 4) used for IP at 6 µg per reaction. RPL7 was also immunoprecipitated by a previous lot of this antibody (A300-741A lot 3). For blotting immunoprecipitated RPL7, A300-741A was used at 0.1 µg/ml. *Detection:* Chemiluminescence with an exposure time of 30 seconds.



**Detection of human RPL7 by immunohistochemistry.** *Sample:* FFPE section of human breast carcinoma. *Antibody:* Affinity purified rabbit anti-RPL7 (A300-741A lot 4) used at a dilution of 1:200 (1 µg/ml). *Detection:* DAB



**Detection of mouse RPL7 by immunohistochemistry.**  
*Sample:* FFPE section of mouse kidney. *Antibody:* Affinity purified rabbit anti-RPL7 (A300-741A lot 4) used at a dilution of 1:200 (1 µg/ml). *Detection:* DAB