

eIF2alpha/EIF2S1 Antibody

Rabbit Polyclonal

Antigen Affinity Purified Protein ID NP_004085.1

Catalog No. A300-721A GeneID 1965

Lot No. A300-721A-1



APPLICATIONS	WB, IP, IHC
SPECIES REACTIVITY	Human, Mouse
PRESUMED REACTIVITY	Based on 100% sequence identity, this antibody is predicted to react with Rat, Bovine and Orangutan
AMOUNT	100 µl
CONCENTRATION	200 µg/ml
STORAGE/SHELF LIFE	2 - 8° C / 1 year from date of receipt
PHYSICAL STATE	Liquid
BUFFER	Tris-buffered Saline containing 0.1% BSA and 0.09% Sodium Azide
ISOTYPE	IgG
ORIGIN	USA
PRODUCTION PROCEDURES	Antibody was affinity purified using an epitope specific to eIF2alpha/EIF2S1 immobilized on solid support. Immunoglobulin concentration was determined by extinction coefficient: absorbance at 280 nm of 1.4 equals 1.0 mg of IgG.

The epitope recognized by A300-721A maps to a region between residue 275 and the C-terminus (residue 315) of human Eukaryotic Translation Initiation Factor 2, subunit 1 alpha, 35kDa using the numbering given in entry NP_004085.1 (GeneID 1965).

APPLICATIONS Centrifuge tube to remove product from lid. Optimal working dilutions should be determined experimentally by the investigator. Prepare working dilution immediately before use.

Western Blot	1:2,000 - 1:10,000
Immunoprecipitation	2 - 5 µg/mg lysate
Immunohistochemistry	1:200 - 1:1,000. Epitope retrieval with Tris-EDTA pH 9.0 is recommended for FFPE tissue sections.

APPLICATION NOTES Western blot of immunoprecipitates performed using Normal Pig Serum (Cat. No. S100-020), Goat anti-Rabbit Light Chain HRP Conjugate (Cat. No. A120-113P) and 4-20% SDS-PAGE (link to IP-western blot protocol in Additional Info section below).

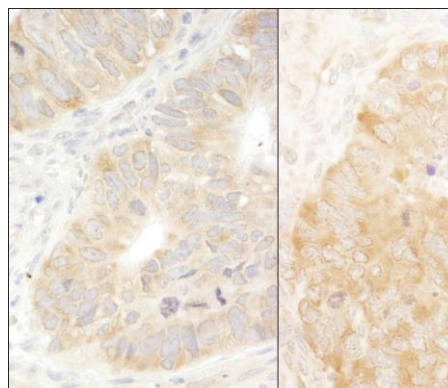
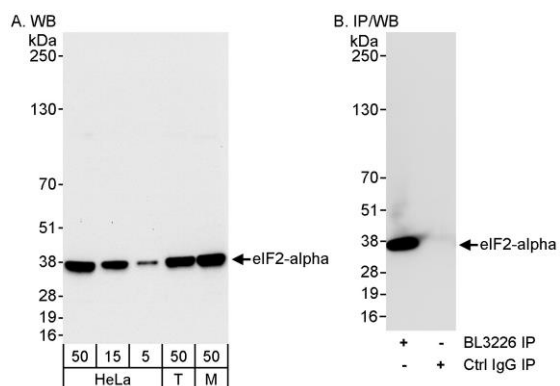
Western blot of lysates performed using standard western blot reagents and 4-20% SDS-PAGE.

IHC HUMAN CONTROLS Breast Carcinoma, Colon Carcinoma, Ovarian Carcinoma

IHC MOUSE CONTROLS Renal Cell Carcinoma, Teratoma

ADDITIONAL INFO <https://www.bethyl.com/product/A300-721A>
Use the link above to view SDS, a current list of citations, and other product specific information.
IP-western blot protocol: https://www.bethyl.com/content/protocol_IP_WB

This document certifies that this product has met all of the quality control standards defined by Bethyl Laboratories, Inc.
Eric McIntush, PhD | Chief Scientific Officer Date: June 21, 2019



Detection of human and mouse eIF2alpha/EIF2S1 by western blot (h&m) and immunoprecipitation (h).

Samples: Whole cell lysate from HeLa (5, 15 and 50 µg for WB; 1 mg for IP, 20% of IP loaded), HEK293T (T; 50 µg), and mouse NIH 3T3 (M; 50 µg) cells. **Antibodies:** Affinity purified rabbit anti-eIF2alpha/EIF2S1 antibody BL3226 (Cat. No. A300-721A) used for WB at 0.04 µg/ml (A) and 1 µg/ml (B) and used for IP at 3 µg/mg lysate (B). **Detection:** Chemiluminescence with exposure times of 30 seconds (A and B).

Detection of human and mouse eIF2alpha/EIF2S1 by immunohistochemistry. *Sample:* FFPE section of human colon carcinoma (left) and mouse teratoma (right).

Antibody: Affinity purified rabbit anti-eIF2alpha/EIF2S1 (Cat. No. A300-721A Lot1) used at a dilution of 1:1,000 (0.2µg/ml) and 1:200 (1µg/ml). **Detection:** DAB