

Nucleolin (NCL) Antibody

Rabbit Polyclonal

Antigen Affinity Purified

Protein ID NP_005372.2

Catalog No. A300-709A

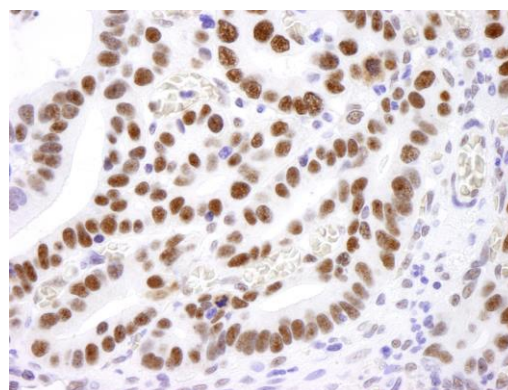
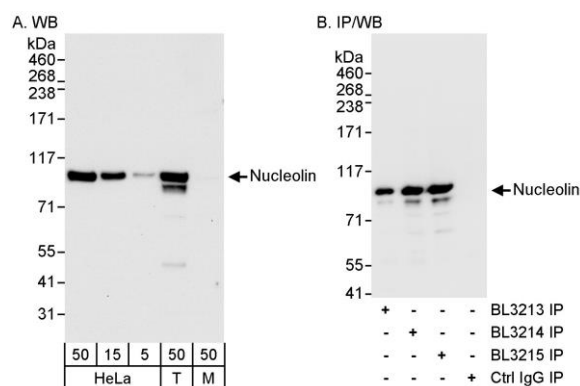
GeneID 4691

Lot No. A300-709A-1



| | |
|------------------------------|--|
| APPLICATIONS | WB, IP, IHC |
| SPECIES REACTIVITY | Human |
| PRESUMED REACTIVITY | Based on 100% sequence identity, this antibody is predicted to react with Orangutan |
| AMOUNT | 100 µl |
| CONCENTRATION | 200 µg/ml |
| STORAGE/SHELF LIFE | 2 - 8° C / 1 year from date of receipt |
| PHYSICAL STATE | Liquid |
| BUFFER | Tris-buffered Saline containing 0.1% BSA and 0.09% Sodium Azide |
| ISOTYPE | IgG |
| ORIGIN | USA |
| PRODUCTION PROCEDURES | Antibody was affinity purified using an epitope specific to Nucleolin (NCL) immobilized on solid support. The epitope recognized by A300-709A maps to a region between residue 250 and 300 of human Nucleolin using the numbering given in entry NP_005372.2 (GeneID 4691). Immunoglobulin concentration was determined by extinction coefficient: absorbance at 280 nm of 1.4 equals 1.0 mg of IgG. |
| APPLICATIONS | Centrifuge tube to remove product from lid. Optimal working dilutions should be determined experimentally by the investigator. Prepare working dilution immediately before use. Western Blot 1:2,000 - 1:10,000 Immunoprecipitation 2 - 5 µg/mg lysate Immunohistochemistry 1:500 - 1:2,000. Epitope retrieval with citrate buffer pH 6.0 is recommended for FFPE tissue sections. |
| APPLICATION NOTES | Western blot of immunoprecipitates performed using Normal Pig Serum (Cat. No. S100-020), Goat anti-Rabbit Light Chain HRP Conjugate (Cat. No. A120-113P) and 4-8% SDS-PAGE (link to IP-western blot protocol in Additional Info section below). Western blot of lysates performed using standard western blot reagents and 4-8% SDS-PAGE. |
| IHC HUMAN CONTROLS | Breast Carcinoma, Colon Carcinoma, Ovarian Carcinoma, Stomach Adenocarcinoma, Testicular Seminoma |
| ADDITIONAL INFO | https://www.bethyl.com/product/A300-709A Use the link above to view SDS, a current list of citations, and other product specific information. IP-western blot protocol: https://www.bethyl.com/content/protocol_IP_WB |

This document certifies that this product has met all of the quality control standards defined by Bethyl Laboratories, Inc.
Eric McIntush, PhD | Chief Scientific Officer Date: June 21, 2019



Detection of human Nucleolin by western blot and immunoprecipitation. *Samples:* Whole cell lysate from HeLa (5, 15 and 50 µg for WB; 1 mg for IP, 20% of IP loaded), HEK293T (T; 50 µg), and mouse NIH 3T3 (M; 50 µg) cells. *Antibodies:* Affinity purified rabbit anti-Nucleolin antibody BL3213 (Cat. No. A300-709A) used for WB at 0.02 µg/ml (A) and 1 µg/ml (B) and used for IP at 3 µg/mg lysate (B). Nucleolin was also immunoprecipitated using rabbit anti-Nucleolin antibodies BL3214 (Cat. No. A300-710A) and BL3215 (Cat. No. A300-711A). *Detection:* Chemiluminescence with exposure times of 30 seconds (A) and 3 seconds (B).

Detection of human Nucleolin by immunohistochemistry. *Sample:* FFPE section of human stomach carcinoma. *Antibody:* Affinity purified rabbit anti-Nucleolin (Cat. No. A300-709A Lot1) used at a dilution of 1:1,000 (1 µg/ml). *Detection:* DAB