

hnRNP-U Antibody

Rabbit Polyclonal

Antigen Affinity Purified

Protein ID NP_114032.1

Catalog No. A300-689A

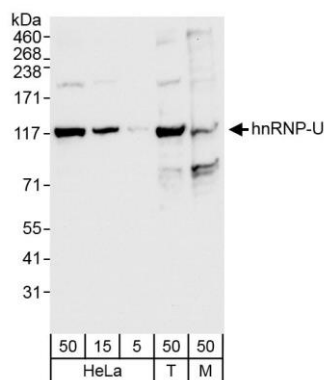
GeneID 3192

Lot No. A300-689A-1



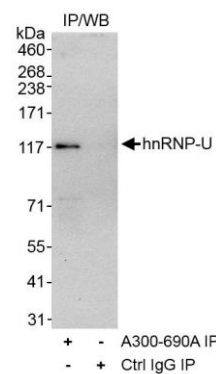
APPLICATIONS	WB, IHC
SPECIES REACTIVITY	Human, Mouse
AMOUNT	100 µl
CONCENTRATION	200 µg/ml
STORAGE/SHELF LIFE	2 – 8° C / 1 year from date of receipt
PHYSICAL STATE	Liquid
BUFFER	Tris-buffered Saline containing 0.1% BSA and 0.09% Sodium Azide
ISOTYPE	IgG
ORIGIN	USA
PRODUCTION PROCEDURES	Antibody was affinity purified using an epitope specific to hnRNP-U immobilized on solid support. The epitope recognized by A300-689A maps to a region between residue 450 and 500 of human Heterogeneous Nuclear Ribonucleoprotein U using the numbering given in entry NP_114032.1 (GeneID 3192). Immunoglobulin concentration was determined by extinction coefficient: absorbance at 280 nm of 1.4 equals 1.0 mg of IgG.
APPLICATIONS	Centrifuge tube to remove product from lid. Optimal working dilutions should be determined experimentally by the investigator. Prepare working dilution immediately before use. Western Blot 1:2000 – 1:10,000 Immunoprecipitation Not recommended. Use rabbit anti-hnRNP-U antibody A300-690A. Immunohistochemistry 1:100 – 1:500. Epitope retrieval with citrate buffer pH 6.0 is recommended for FFPE tissue sections.
APPLICATION NOTES	Western blot of lysates performed using standard western blot reagents and 4–8% SDS-PAGE.
IHC HUMAN CONTROLS	Breast Carcinoma, Linitis Plastica Stomach Cancer, Ovarian Carcinoma, Skin Basal Cell Carcinoma, Small Cell Lung Cancer, Stomach Adenocarcinoma
IHC MOUSE CONTROLS	Squamous Cell Carcinoma
ADDITIONAL INFO	https://www.bethyl.com/product/A300-689A Use the link above to view SDS, a current list of citations, and other product specific information.

This document certifies that this product has met all of the quality control standards defined by Bethyl Laboratories, Inc.
Eric McIntush, PhD | Chief Scientific Officer Date: October 16, 2019



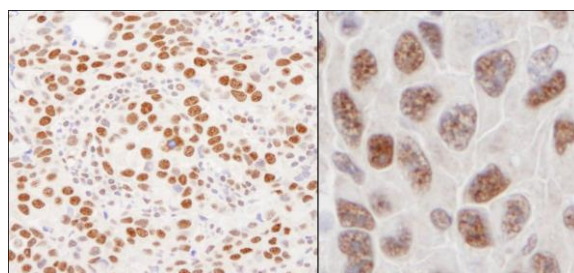
Detection of human and mouse hnRNP-U by western blot.

Samples: Whole cell lysate from HeLa (5, 15 and 50 µg), HEK293T (T; 50 µg), and mouse NIH 3T3 (M; 50 µg) cells. **Antibodies:** Affinity purified rabbit anti-hnRNP-U antibody A300-689A (lot A300-689A-1) used for WB at 0.04 µg/ml. **Detection:** Chemiluminescence with exposure time of 10 seconds.



Detection of human hnRNP-U by western blot of immunoprecipitates.

Samples: Whole cell lysate (1 mg for IP, 20% of IP loaded) from HeLa cells. **Antibodies:** Affinity purified rabbit anti-hnRNP-U antibody A300-689A (lot A300-689A-1) used for WB at 1 µg/ml. hnRNP-U was immunoprecipitated using rabbit anti-hnRNP-U antibody A300-690A at 3 µg/mg lysate. **Detection:** Chemiluminescence with exposure time of 30 seconds.



Detection of human and mouse hnRNP-U by immunohistochemistry.

Sample: FFPE section of human breast carcinoma (left) and mouse squamous cell carcinoma (right). **Antibody:** Affinity purified rabbit anti-hnRNP-U (Cat. No. A300-689A Lot1) used at a dilution of 1:200 (1 µg/ml). **Detection:** DAB