

RPL26 Antibody

Rabbit Polyclonal

Antigen Affinity Purified Protein ID NP_000978.1
Catalog No. A300-686A GeneID 6154
Lot No. A300-686A-1



APPLICATIONS WB, IP, IHC
SPECIES REACTIVITY Human, Mouse
PRESUMED REACTIVITY Based on 100% sequence identity, this antibody is predicted to react with Rat, Chicken and Bovine
AMOUNT 100 µl
CONCENTRATION 200 µg/ml
STORAGE/SHELF LIFE 2 - 8° C / 1 year from date of receipt
PHYSICAL STATE Liquid
BUFFER Tris-buffered Saline containing 0.1% BSA and 0.09% Sodium Azide
ISOTYPE IgG
ORIGIN USA
PRODUCTION PROCEDURES Antibody was affinity purified using an epitope specific to RPL26 immobilized on solid support.

The epitope recognized by A300-686A maps to a region between residue 100 and the C-terminus (residue 145) of human Ribosomal Protein L26 using the numbering given in entry NP_000978.1 (GeneID 6154).

Immunoglobulin concentration was determined by extinction coefficient: absorbance at 280 nm of 1.4 equals 1.0 mg of IgG.

APPLICATIONS Centrifuge tube to remove product from lid. Optimal working dilutions should be determined experimentally by the investigator. Prepare working dilution immediately before use.

Western Blot 1:2,500 - 1:10,000

Immunoprecipitation 1 - 4 µg/mg lysate

Immunohistochemistry 1:200 - 1:1,000. Epitope retrieval with citrate buffer pH 6.0 is recommended for FFPE tissue sections.

APPLICATION NOTES Western blot of immunoprecipitates performed using Normal Pig Serum (Cat. No. S100-020), Goat anti-Rabbit Light Chain HRP Conjugate (Cat. No. A120-113P) and 4-12% SDS-PAGE (link to IP-western blot protocol in Additional Info section below).

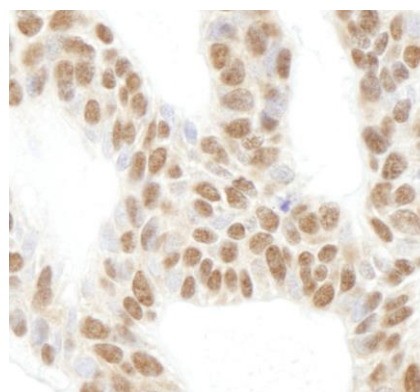
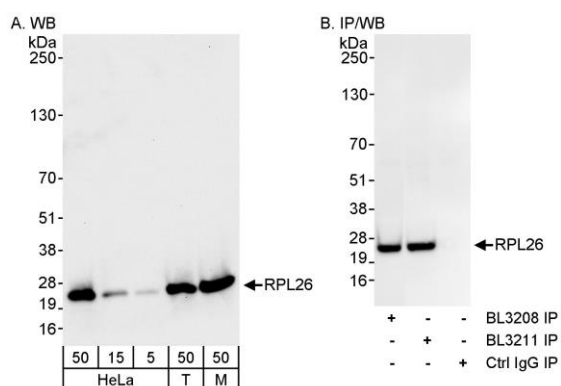
IHC HUMAN CONTROLS Western blot of lysates performed using standard western blot reagents and 4-12% SDS-PAGE. Laryngeal Squamous Cell Carcinoma, Ovarian Carcinoma, Skin Basal Cell Carcinoma, Testicular Seminoma

ADDITIONAL INFO <https://www.bethyl.com/product/A300-686A>

Use the link above to view SDS, a current list of citations, and other product specific information.

IP-western blot protocol: https://www.bethyl.com/content/protocol_IP_WB

This document certifies that this product has met all of the quality control standards defined by Bethyl Laboratories, Inc.
Eric McIntush, PhD | Chief Scientific Officer Date: June 21, 2019



Detection of human and mouse RPL26 by western blot (h and m) and immunoprecipitation (m). *Samples:* Whole cell lysate from HeLa (5, 15 and 50 µg for WB; 1 mg for IP, 20% of IP loaded), HEK293T (T; 50 µg) and mouse NIH 3T3 (M; 50 µg) cells. *Antibodies:* Affinity purified rabbit anti-RPL26 antibody BL3211 (Cat. No. A300-686A) used for WB at 0.04 µg/ml (A) and 1 µg/ml (B), and used for IP at 3 µg/mg lysate. RPL26 was also immunoprecipitated by rabbit anti-RPL26 antibody BL3208 (Cat. No. A300-685A). *Detection:* Chemiluminescence with exposure times of 30 seconds (A) and 3 seconds (B).

Detection of human expndw-4 RPL26 by immunohistochemistry. *Sample:* FFPE section of human skin carcinoma. *Antibody:* Affinity purified rabbit anti-expndw-4 RPL26 (Cat. No. A300-686A Lot1) used at a dilution of 1:200 (1 µg/ml). *Detection:* DAB