

MAML1 Antibody

Rabbit Polyclonal

Antigen Affinity Purified

Protein ID NP_055572.1

Catalog No. A300-672A

GeneID 9794

Lot No. A300-672A-2



APPLICATIONS	WB, IP
SPECIES REACTIVITY	Human
AMOUNT	100 µl
CONCENTRATION	1000 µg/ml
STORAGE/SHELF LIFE	2 – 8° C / 1 year from date of receipt
PHYSICAL STATE	Liquid
BUFFER	Tris-citrate/phosphate buffer, pH 7 to 8 containing 0.09% Sodium Azide
ISOTYPE	IgG
ORIGIN	USA
PRODUCTION PROCEDURES	Antibody was affinity purified using an epitope specific to MAML1 immobilized on solid support.

The epitope recognized by A300-672A maps to a region between residue 75 and 125 of human Mastermind-like 1 using the numbering given in entry NP_055572.1 (GeneID 9794).

Immunoglobulin concentration was determined by extinction coefficient: absorbance at 280 nm of 1.4 equals 1.0 mg of IgG.

APPLICATIONS Centrifuge tube to remove product from lid. Optimal working dilutions should be determined experimentally by the investigator. Prepare working dilution immediately before use.

Western Blot 1:10,000 – 1:25,000

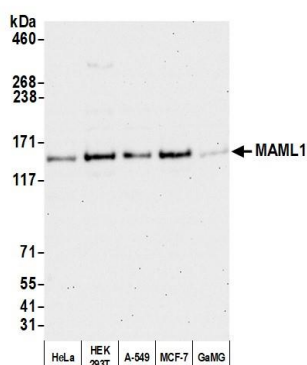
Immunoprecipitation 2 – 10 µg/mg lysate

IHC HUMAN CONTROLS Breast Carcinoma, Ovarian Carcinoma

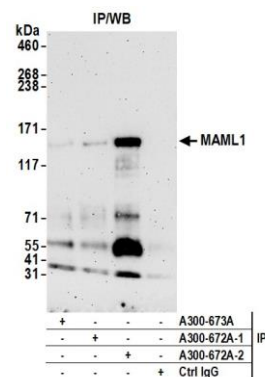
ADDITIONAL INFO <https://www.bethyl.com/product/A300-672A>

Use the link above to view SDS, a current list of citations, and other product specific information.
IP-western blot protocol: https://www.bethyl.com/content/protocol_IP_WB

This document certifies that this product has met all of the quality control standards defined by Bethyl Laboratories, Inc.
Brian McWilliams, PhD Date: December 28, 2020



Detection of human MAML1 by western blot. *Samples:* Whole cell lysate (50 μ g) from HeLa, HEK293T, A-549, MCF-7, and GaMG cells prepared using NETN lysis buffer. *Antibody:* Affinity purified rabbit anti-MAML1 antibody A300-672A (lot A300-672A-2) used for WB at 0.04 μ g/ml. *Detection:* Chemiluminescence with an exposure time of 30 seconds.



Detection of human MAML1 by western blot of immunoprecipitates. *Samples:* Whole cell lysate (1.0 mg per IP reaction; 20% of IP loaded) from HeLa cells prepared using NETN lysis buffer. *Antibodies:* Affinity purified rabbit anti-MAML1 antibody A300-672A (lot 2) used for IP at 6 μ g per reaction. MAML1 was also immunoprecipitated by a previous lot of this antibody (lot 1) and rabbit anti-MAML1 antibody A300-673A. For blotting immunoprecipitated MAML1, A300-672A was used at 0.04 μ g/ml. *Detection:* Chemiluminescence with an exposure time of 3 minutes.