

# ATRIP Antibody

Rabbit Polyclonal

Antigen Affinity Purified

Protein ID NP\_569055.1

Catalog No. A300-670A

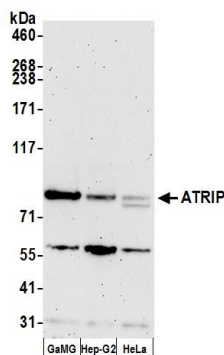
GeneID 84126

Lot No. A300-670A-2

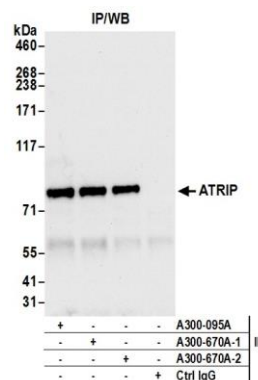


<b>APPLICATIONS</b>	WB, IP, IHC
<b>SPECIES REACTIVITY</b>	Human
<b>AMOUNT</b>	100 µl
<b>CONCENTRATION</b>	1000 µg/ml
<b>STORAGE/SHELF LIFE</b>	2 – 8° C / 1 year from date of receipt
<b>PHYSICAL STATE</b>	Liquid
<b>BUFFER</b>	Tris-citrate/phosphate buffer, pH 7 to 8 containing 0.09% Sodium Azide
<b>ISOTYPE</b>	IgG
<b>ORIGIN</b>	USA
<b>PRODUCTION PROCEDURES</b>	<p>Antibody was affinity purified using an epitope specific to ATRIP immobilized on solid support.</p> <p>The epitope recognized by A300-670A maps to a region between residue 100 to 150 of human ATM and Rad3-related-interacting protein using the numbering given in entry NP_569055.1 (GeneID 84126).</p> <p>Immunoglobulin concentration was determined by extinction coefficient: absorbance at 280 nm of 1.4 equals 1.0 mg of IgG.</p>
<b>APPLICATIONS</b>	<p>Centrifuge tube to remove product from lid. Optimal working dilutions should be determined experimentally by the investigator. Prepare working dilution immediately before use.</p> <p>Western Blot 1:2,000 – 1:10,000</p> <p>Immunoprecipitation 2 – 10 µg/mg lysate</p> <p>Immunohistochemistry 1:1,000 to 1:5,000. Epitope retrieval with citrate buffer pH6.0 is recommended for FFPE tissue sections.</p>
<b>APPLICATION NOTES</b>	<p>Western blot of immunoprecipitates performed using Normal Pig Serum (Cat. No. S100-020), Goat anti-Rabbit Light Chain HRP Conjugate (Cat. No. A120-113P) and 4-8% SDS-PAGE (link to IP-western blot protocol in Additional Info section below).</p> <p>Western blot of lysates performed using standard western blot reagents and 4-8% SDS-PAGE.</p>
<b>IHC HUMAN CONTROLS</b>	Non-Small Cell Lung Cancer, Ovarian Carcinoma, Prostate Carcinoma, Small Cell Lung Cancer
<b>ADDITIONAL INFO</b>	<p><a href="https://www.bethyl.com/product/A300-670A">https://www.bethyl.com/product/A300-670A</a></p> <p>Use the link above to view SDS, a current list of citations, and other product specific information. IP-western blot protocol: <a href="https://www.bethyl.com/content/protocol_IP_WB">https://www.bethyl.com/content/protocol_IP_WB</a></p>

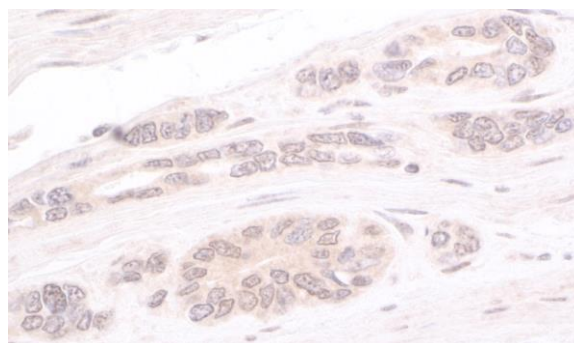
This document certifies that this product has met all of the quality control standards defined by Bethyl Laboratories, Inc.  
Eric McIntush, PhD | Chief Scientific Officer Date: June 21, 2019



Detection of human ATRIP by western blot. Samples: Whole cell lysate (50 µg) from GaMG, Hep-G2, and HeLa cells prepared using NETN lysis buffer. Antibody: Affinity purified rabbit anti-ATRIP antibody A300-670A (lot A300-670A-2) used for WB at 0.1 µg/ml. Detection: Chemiluminescence with an exposure time of 3 minutes.



**Detection of human ATRIP by western blot of immunoprecipitates.** *Samples:* Whole cell lysate (1.0 mg per IP reaction; 20% of IP loaded) from HeLa cells prepared using NETN lysis buffer. *Antibodies:* Affinity purified rabbit anti-ATRIP antibody A300-670A (lot A300-670A-2) used for IP at 6 µg per reaction. ATRIP was also immunoprecipitated by a previous lot of this antibody (lot A300-670A-1) and rabbit anti-ATRIP antibody A300-095A. For blotting immunoprecipitated ATRIP, A300-670A was used at 1 µg/ml. *Detection:* Chemiluminescence with an exposure time of 10 seconds.



**Detection of human ATRIP by immunohistochemistry.**

*Sample:* FFPE section of human ovarian carcinoma.  
*Antibody:* Affinity purified rabbit anti-ATRIP (Cat. No. A300-670A lot 2) used at a dilution of 1:5,000 ( 0.2µg/ml).  
*Detection:* DAB