

# Tip41 Antibody

Rabbit Polyclonal

Antigen Affinity Purified	Protein ID	NP_690866.1
Catalog No. A300-663A	GeneID	261726
Lot No. A300-663A-2		

---

<b>APPLICATIONS</b>	WB, IP, IHC
<b>SPECIES REACTIVITY</b>	Human, Mouse
<b>AMOUNT</b>	100 µl
<b>CONCENTRATION</b>	200 µg/ml
<b>STORAGE/SHELF LIFE</b>	2 – 8°C / 1 year from date of receipt
<b>PHYSICAL STATE</b>	Liquid
<b>BUFFER</b>	Tris-buffered Saline containing 0.1% BSA and 0.09% Sodium Azide
<b>ISOTYPE</b>	IgG
<b>ORIGIN</b>	USA
<b>PRODUCTION PROCEDURES</b>	Antibody was affinity purified using an epitope specific to Tip41 immobilized on solid support.

The epitope recognized by A300-663A maps to a region between residue 225 and the C-terminus (residue 272) of human TIP41, TOR-signaling Pathway Regulator-like using the numbering given in entry NP\_690866.1 (GeneID 261726).

Immunoglobulin concentration was determined by extinction coefficient: absorbance at 280 nm of 1.4 equals 1.0 mg of IgG.

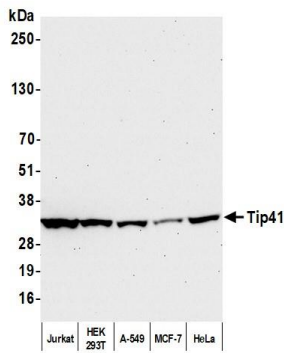
**APPLICATIONS** Centrifuge tube to remove product from lid. Optimal working dilutions should be determined experimentally by the investigator. Prepare working dilution immediately before use.

Western Blot	1:2,000 – 1:10,000
Immunoprecipitation	2 – 5 µg/mg lysate
Immunohistochemistry	1:100 to 1:500. Epitope retrieval with Tris-EDTA pH9.0 is recommended for FFPE tissue sections.

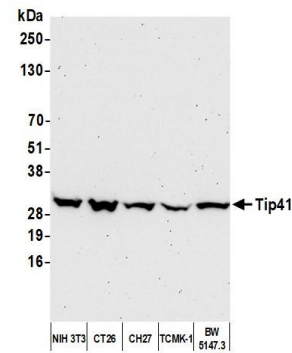
**IHC HUMAN CONTROLS** Breast Carcinoma, Colon Carcinoma, Ovarian Carcinoma, Prostate Carcinoma

**ADDITIONAL INFO** <https://www.bethyl.com/product/A300-663A>  
Use the link above to view SDS, a current list of citations, and other product specific information.  
IP-western blot protocol: [https://www.bethyl.com/content/protocol\\_IP\\_WB](https://www.bethyl.com/content/protocol_IP_WB)

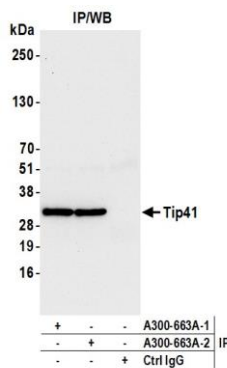
This document certifies that this product has met all of the quality control standards defined by Bethyl Laboratories, Inc.  
Michael Spencer, PhD Date: December 2, 2021



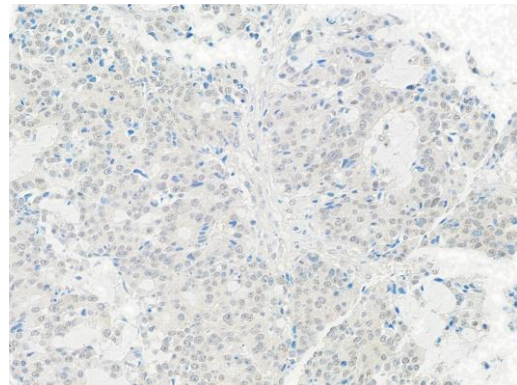
**Detection of human Tip41 by western blot.** *Samples:* Whole cell lysate (50 µg) from Jurkat, HEK293T, A-549, MCF-7, and HeLa cells prepared using NETN lysis buffer. *Antibody:* Affinity purified rabbit anti-Tip41 antibody (A300-663A lot 2) used for WB at 0.04 µg/ml. *Detection:* Chemiluminescence with an exposure time of 30 seconds.



**Detection of mouse Tip41 by western blot.** *Samples:* Whole cell lysate (50 µg) from NIH 3T3, CT26, CH27, TCMK-1, and BW5147.3 cells prepared using NETN lysis buffer. *Antibody:* Affinity purified rabbit anti-Tip41 antibody (A300-663A lot 2) used for WB at 0.04 µg/ml. *Detection:* Chemiluminescence with an exposure time of 75 seconds.



**Detection of human Tip41 by western blot of immunoprecipitates.** *Samples:* Whole cell lysate (1.0 mg per IP reaction; 20% of IP loaded) from HEK293T cells prepared using NETN lysis buffer. *Antibodies:* Affinity purified rabbit anti-Tip41 antibody (A300-663A lot 2) used for IP at 6 µg per reaction. Tip41 was also immunoprecipitated by a previous lot of this antibody (A300-663A lot 1). For blotting immunoprecipitated Tip41, A300-663A was used at 0.04 µg/ml. *Detection:* Chemiluminescence with an exposure time of 10 seconds.



**Detection of human Tip41 by immunohistochemistry.** *Sample:* FFPE section of human colon carcinoma. *Antibody:* Affinity purified rabbit anti-Tip41 (A300-663A Lot 2) used at a dilution of 1:200 (1 µg/ml). *Detection:* DAB