

# Tip41 Antibody

Rabbit Polyclonal

Antigen Affinity Purified

Protein ID NP\_690866.1

Catalog No. A300-662A

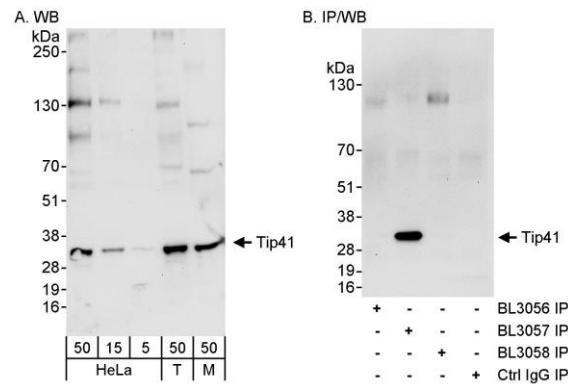
GeneID 261726

Lot No. A300-662A-1



<b>APPLICATIONS</b>	WB				
<b>SPECIES REACTIVITY</b>	Human, Mouse				
<b>PRESUMED REACTIVITY</b>	Based on 100% sequence identity, this antibody is predicted to react with Rat				
<b>AMOUNT</b>	100 µl				
<b>CONCENTRATION</b>	200 µg/ml				
<b>STORAGE/SHELF LIFE</b>	2 - 8° C / 1 year from date of receipt				
<b>PHYSICAL STATE</b>	Liquid				
<b>BUFFER</b>	Tris-buffered Saline containing 0.1% BSA and 0.09% Sodium Azide				
<b>ISOTYPE</b>	IgG				
<b>ORIGIN</b>	USA				
<b>PRODUCTION PROCEDURES</b>	<p>Antibody was affinity purified using an epitope specific to Tip41 immobilized on solid support.</p> <p>The epitope recognized by A300-662A maps to a region between residues 200 and 250 of human TIP41, TOR-signaling Pathway Regulator-like using the numbering given in entry NP_690866.1 (GeneID 261726).</p> <p>Immunoglobulin concentration was determined by extinction coefficient: absorbance at 280 nm of 1.4 equals 1.0 mg of IgG.</p>				
<b>APPLICATIONS</b>	<p>Centrifuge tube to remove product from lid. Optimal working dilutions should be determined experimentally by the investigator. Prepare working dilution immediately before use.</p> <table><tr><td>Western Blot</td><td>1:2,000 - 1:10,000</td></tr><tr><td>Immunoprecipitation</td><td>Not recommended. A300-662A is much less efficient than rabbit anti-Tip41 antibody A300-663A at immunoprecipitation of Tip41.</td></tr></table>	Western Blot	1:2,000 - 1:10,000	Immunoprecipitation	Not recommended. A300-662A is much less efficient than rabbit anti-Tip41 antibody A300-663A at immunoprecipitation of Tip41.
Western Blot	1:2,000 - 1:10,000				
Immunoprecipitation	Not recommended. A300-662A is much less efficient than rabbit anti-Tip41 antibody A300-663A at immunoprecipitation of Tip41.				
<b>APPLICATION NOTES</b>	Western blot of lysates performed using standard western blot reagents and 4-20% SDS-PAGE.				
<b>ADDITIONAL INFO</b>	<p><a href="https://www.bethyl.com/product/A300-662A">https://www.bethyl.com/product/A300-662A</a></p> <p>Use the link above to view SDS, a current list of citations, and other product specific information.</p>				

This document certifies that this product has met all of the quality control standards defined by Bethyl Laboratories, Inc.  
Eric McIntush, PhD | Chief Scientific Officer Date: June 21, 2019



**Detection of human and mouse Tip41 by western blot (h & m) and immunoprecipitation (h).** *Samples:* Whole cell lysate from HeLa (5, 15 and 50  $\mu$ g for WB; 1 mg for IP; 20% of IP loaded), HEK293T (T; 50  $\mu$ g) and mouse NIH 3T3 (M; 50  $\mu$ g) cells. *Antibodies:* Affinity purified rabbit anti-Tip41 antibody BL3056 (Cat. No. A300-662A) used for WB at 0.04  $\mu$ g/ml (A) and 1  $\mu$ g/ml (B) and used for IP at 3  $\mu$ g/mg lysate. Tip41 was successfully immunoprecipitated by rabbit anti-Tip41 antibody BL3057 (Cat. No. A300-663A) but not by BL3058. *Detection:* Chemiluminescence with exposure times of 30 seconds (A and B).