

# PHLPPL Antibody

Rabbit Polyclonal

Antigen Affinity Purified

Protein ID NP\_055835.2

Catalog No. A300-661A

GeneID 23035

Lot No. A300-661A-2



<b>APPLICATIONS</b>	WB, IP
<b>SPECIES REACTIVITY</b>	Human, Mouse
<b>AMOUNT</b>	100 µl
<b>CONCENTRATION</b>	200 µg/ml
<b>STORAGE/SHELF LIFE</b>	2 - 8° C / 1 year from date of receipt
<b>PHYSICAL STATE</b>	Liquid
<b>BUFFER</b>	Tris-buffered Saline containing 0.1% BSA and 0.09% Sodium Azide
<b>ISOTYPE</b>	IgG
<b>ORIGIN</b>	USA
<b>PRODUCTION PROCEDURES</b>	Antibody was affinity purified using an epitope specific to PHLPPL immobilized on solid support.

The epitope recognized by A300-661A maps to a region between residues 1275 and the C-terminus (residue 1323) of human PH Domain and Leucine Rich Repeat Protein Phosphatase-like using the numbering given in entry NP\_055835.2 (GeneID 23035).

Immunoglobulin concentration was determined by extinction coefficient: absorbance at 280 nm of 1.4 equals 1.0 mg of IgG.

**APPLICATIONS** Centrifuge tube to remove product from lid. Optimal working dilutions should be determined experimentally by the investigator. Prepare working dilution immediately before use.

Western Blot 1:2,000 - 1:10,000

Immunoprecipitation 2 - 10 µg/mg lysate

**APPLICATION NOTES** Western blot of immunoprecipitates performed using Normal Pig Serum (Cat. No. S100-020), Goat anti-Rabbit Light Chain HRP Conjugate (Cat. No. A120-113P) and 4-8% SDS-PAGE (link to IP-western blot protocol in Additional Info section below).

Western blot of lysates performed using standard western blot reagents and 4-8% SDS-PAGE.

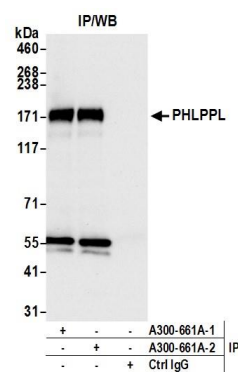
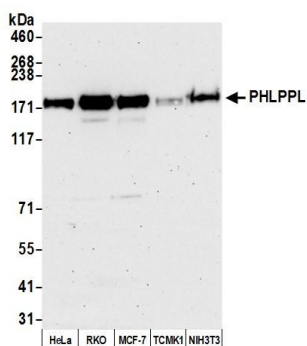
## ADDITIONAL INFO

<https://www.bethyl.com/product/A300-661A>

Use the link above to view SDS, a current list of citations, and other product specific information.

IP-western blot protocol: [https://www.bethyl.com/content/protocol\\_IP\\_WB](https://www.bethyl.com/content/protocol_IP_WB)

This document certifies that this product has met all of the quality control standards defined by Bethyl Laboratories, Inc.  
Eric McIntush, PhD | Chief Scientific Officer Date: June 21, 2019



**Detection of human PHLPPPL by western blot.** *Samples:* Whole cell lysate (50 µg) from HeLa, RKO, MCF-7, TCMK-1, and NIH 3T3 cells prepared using NETN lysis buffer. *Antibody:* Affinity purified Rabbit anti-PHLPPPL antibody A300-661A (lot A300-661A-2) used for WB at 0.04 µg/ml. *Detection:* Chemiluminescence with an exposure time of 75 seconds.

**Detection of human PHLPPPL by western blot of immunoprecipitates.** *Samples:* Whole cell lysate (1.0 mg per IP reaction; 20% of IP loaded) from HeLa cells prepared using NETN lysis buffer. *Antibodies:* Affinity purified Rabbit anti-PHLPPPL antibody A300-661A (lot A300-661A-2) used for IP at 6 µg per reaction. PHLPPPL was also immunoprecipitated by a previous lot of this antibody (lot A300-661A-1). For blotting immunoprecipitated PHLPPPL, A300-661A was used at 0.04 µg/ml. Chemiluminescence with an exposure time of 10 seconds.