

# REA Antibody

Rabbit Polyclonal

Antigen Affinity Purified

Protein ID NP\_009204.1

Catalog No. A300-656A

GeneID 11331

Lot No. A300-656A-1



<b>APPLICATIONS</b>	IP, IHC
<b>SPECIES REACTIVITY</b>	Human
<b>PRESUMED REACTIVITY</b>	Based on 100% sequence identity, this antibody is predicted to react with Mouse and Orangutan
<b>AMOUNT</b>	100 µl
<b>CONCENTRATION</b>	1000 µg/ml
<b>STORAGE/SHELF LIFE</b>	2 - 8° C / 1 year from date of receipt
<b>PHYSICAL STATE</b>	Liquid
<b>BUFFER</b>	Tris-citrate/phosphate buffer, pH 7 to 8 containing 0.09% Sodium Azide
<b>ISOTYPE</b>	IgG
<b>ORIGIN</b>	USA
<b>PRODUCTION PROCEDURES</b>	Antibody was affinity purified using an epitope specific to REA immobilized on solid support.

The epitope recognized by A300-656A maps to a region between residues 1 and 50 of human Repressor of Estrogen Activity (Prohibitin 2) using the numbering given in entry NP\_009204.1 (GeneID 11331).

Immunoglobulin concentration was determined by extinction coefficient: absorbance at 280 nm of 1.4 equals 1.0 mg of IgG.

**APPLICATIONS** Centrifuge tube to remove product from lid. Optimal working dilutions should be determined experimentally by the investigator. Prepare working dilution immediately before use.

Western Blot Not recommended. Use rabbit anti-REA Antibodies Cat. No. A300-657A or Cat No. A300-658A.

Immunoprecipitation 1 - 4 µg/mg lysate

Immunohistochemistry 1:1,000 - 1:5,000. Epitope retrieval with citrate buffer pH 6.0 is recommended for FFPE tissue sections.

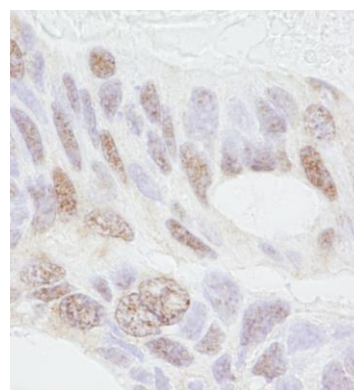
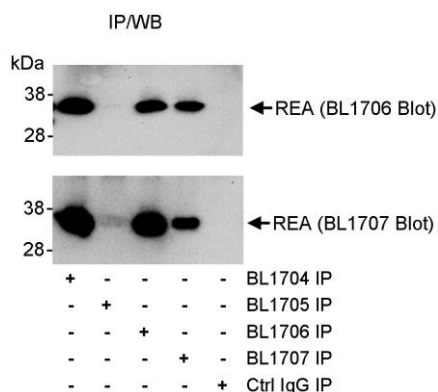
**APPLICATION NOTES** Western blot of immunoprecipitates performed using Normal Pig Serum (Cat. No. S100-020), Goat anti-Rabbit Light Chain HRP Conjugate (Cat. No. A120-113P) and 4-20% SDS-PAGE (link to IP-western blot protocol in Additional Info section below).

**IHC HUMAN CONTROLS** Breast Carcinoma, Ovarian Carcinoma, Prostate Carcinoma

**ADDITIONAL INFO** <https://www.bethyl.com/product/A300-656A>

Use the link above to view SDS, a current list of citations, and other product specific information. IP-western blot protocol: [https://www.bethyl.com/content/protocol\\_IP\\_WB](https://www.bethyl.com/content/protocol_IP_WB)

This document certifies that this product has met all of the quality control standards defined by Bethyl Laboratories, Inc.  
Eric McIntush, PhD | Chief Scientific Officer Date: June 21, 2019



**Detection of human REA by western blot of immunoprecipitates.** *Samples:* Whole cell lysate (1 mg/IP, 20% of IP loaded) from HeLa cells. *Antibodies:* Affinity purified rabbit anti-REA antibodies BL1704 (Cat. No. A300-656A), BL1705, BL1706 (Cat. No. A300-657A), BL1707 (A300-658A) each used for IP at 3 µg/mg lysate. immunoprecipitated REA was blotted using BL1706 (upper blot) or BL1707 (lower blot). *Detection:* Chemiluminescence with exposure times of 30 seconds (upper and lower).

**Detection of human REA by immunohistochemistry.** *Sample:* FFPE section of human ovarian carcinoma. *Antibody:* Affinity purified rabbit anti- REA (Cat. No. A300-656A Lot1) used at a dilution of 1:1,000 (1 µg/ml). *Detection:* DAB