

# Phospho RNA Polymerase II (S2) Antibody

Rabbit Polyclonal

Antigen Affinity Purified

Protein ID NP\_000928.1

Catalog No. A300-654A

GeneID 5430

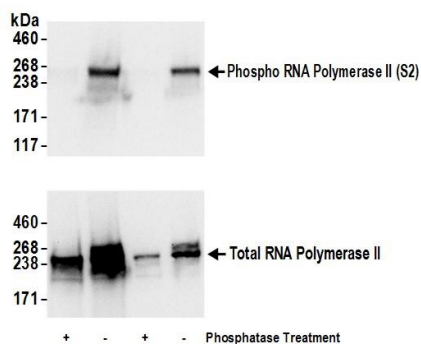
Lot No. A300-654A-3



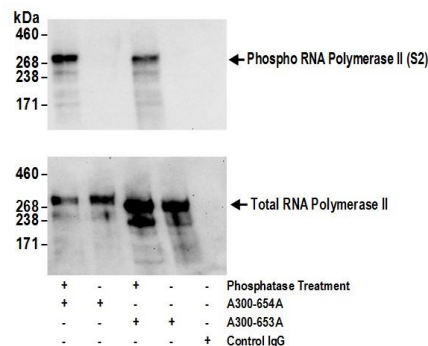
<b>APPLICATIONS</b>	WB, IP, IHC						
<b>SPECIES REACTIVITY</b>	Human, Mouse						
<b>PRESUMED REACTIVITY</b>	Based on 100% sequence identity, this antibody is predicted to react with D. melanogaster						
<b>AMOUNT</b>	100 µl						
<b>CONCENTRATION</b>	200 µg/ml						
<b>STORAGE/SHELF LIFE</b>	2 – 8° C / 1 year from date of receipt						
<b>PHYSICAL STATE</b>	Liquid						
<b>BUFFER</b>	Tris-buffered Saline containing 0.1% BSA and 0.09% Sodium Azide						
<b>ISOTYPE</b>	IgG						
<b>ORIGIN</b>	USA						
<b>PRODUCTION PROCEDURES</b>	<p>Antibody was affinity purified using an epitope specific to Phospho RNA Polymerase II (S2) immobilized on solid support.</p> <p>Immunogen for A300-654A was a phosphorylated synthetic peptide, which represented a portion of human RNA Polymerase II (GeneID 5430) around serine 2 of the C-terminal repeat YSPTSPS.</p> <p>Immunoglobulin concentration was determined by extinction coefficient: absorbance at 280 nm of 1.4 equals 1.0 mg of IgG.</p>						
<b>APPLICATIONS</b>	<p>Centrifuge tube to remove product from lid. Optimal working dilutions should be determined experimentally by the investigator. Prepare working dilution immediately before use.</p> <table><tr><td>Western Blot</td><td>1:2,000 – 1:10,000</td></tr><tr><td>Immunoprecipitation</td><td>2 – 10 µg/mg lysate</td></tr><tr><td>Immunohistochemistry</td><td>1:200 – 1:1,000. Epitope retrieval with citrate buffer pH 6.0 is recommended for FFPE tissue sections.</td></tr></table>	Western Blot	1:2,000 – 1:10,000	Immunoprecipitation	2 – 10 µg/mg lysate	Immunohistochemistry	1:200 – 1:1,000. Epitope retrieval with citrate buffer pH 6.0 is recommended for FFPE tissue sections.
Western Blot	1:2,000 – 1:10,000						
Immunoprecipitation	2 – 10 µg/mg lysate						
Immunohistochemistry	1:200 – 1:1,000. Epitope retrieval with citrate buffer pH 6.0 is recommended for FFPE tissue sections.						
<b>APPLICATION NOTES</b>	<p>Western blot of immunoprecipitates performed using Normal Pig Serum (Cat. No. S100-020), Goat anti-Rabbit Light Chain HRP Conjugate (Cat. No. A120-113P) and 4-8% SDS-PAGE (link to IP-western blot protocol in Additional Info section below).</p> <p>Western blot of lysates performed using standard western blot reagents and 4-8% SDS-PAGE.</p>						
<b>IHC HUMAN CONTROLS</b>	Breast Carcinoma, Colon Carcinoma, Ovarian Carcinoma, Prostate Carcinoma, Stomach Adenocarcinoma						
<b>IHC MOUSE CONTROLS</b>	Renal Cell Carcinoma, Squamous Cell Carcinoma, Teratoma						
<b>ADDITIONAL INFO</b>	<p><a href="https://www.bethyl.com/product/A300-654A">https://www.bethyl.com/product/A300-654A</a></p> <p>Use the link above to view SDS, a current list of citations, and other product specific information.</p> <p>IP-western blot protocol: <a href="https://www.bethyl.com/content/protocol_IP_WB">https://www.bethyl.com/content/protocol_IP_WB</a></p>						

This document certifies that this product has met all of the quality control standards defined by Bethyl Laboratories, Inc.  
Eric McIntush, PhD | Chief Scientific Officer

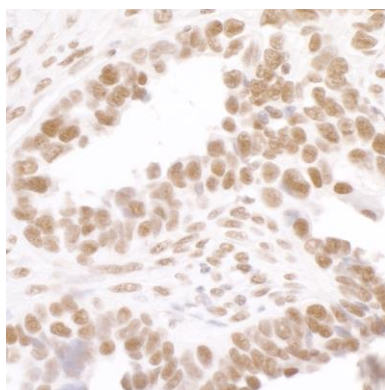
Date: June 21, 2019



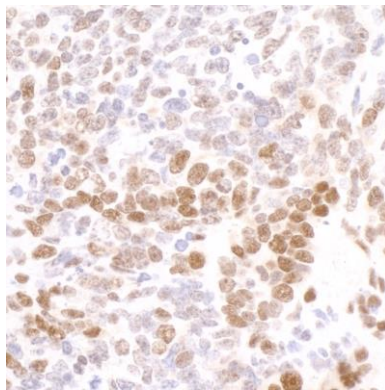
**Detection of human Phospho RNA Polymerase II (S2) by western blot.** *Samples:* Whole cell lysate (50 and 15  $\mu$ g) from HeLa prepared using NETN buffer. Lysate was mock treated (-) or treated with phosphatases (+). *Antibodies:* Affinity purified rabbit anti-Phospho RNA Polymerase II (S2) antibody A300-654A (lot A300-654A-3) was used for WB at 0.04  $\mu$ g/ml (upper panel). To examine total RNA Polymerase II, rabbit anti-RNA Polymerase II antibody A300-653A was used at 1  $\mu$ g/ml (lower panel). *Detection:* Chemiluminescence with exposure time of 3 seconds.



**Detection of Phospho RNA Polymerase II (S2) by western blot of immunoprecipitates.** *Samples:* Whole cell lysate (0.5 or 1 mg per IP reaction, 20% of IP loaded) from HeLa cells prepared using NETN lysis buffer. immunoprecipitates were either phosphatase treated (+) or mock treated (-). *Antibody:* Affinity purified rabbit anti-Phospho RNA Polymerase II (S2) antibody A300-654A (lot A300-654A-3) used for IP at 5  $\mu$ g per reaction and Affinity purified rabbit anti-RNA Polymerase II antibody A300-653A used for IP at 5  $\mu$ g per reaction. For blotting immunoprecipitated Phospho RNA Polymerase II (S2) and total RNA Polymerase II, A300-654A was used at 0.1  $\mu$ g/ml (upper panel) and A300-653A was used at 1  $\mu$ g/ml (lower panel). *Detection:* Chemiluminescence with an exposure time of 10 seconds (upper) and 75 seconds (lower).



**Detection of human Phospho-RNA Polymerase II (S2) by immunohistochemistry.** *Sample:* FFPE section of human ovarian carcinoma. *Antibody:* Affinity purified rabbit anti-Phospho-RNA Polymerase II (S2) (Cat. No. A300-654A Lot3) used at a dilution of 1:1000 (0.2 $\mu$ g/ml). *Detection:*



**Detection of mouse Phospho-RNA Polymerase II (S2) by immunohistochemistry.** *Sample:* FFPE section of mouse teratoma. *Antibody:* Affinity purified rabbit anti-Phospho-RNA Polymerase II (S2) (Cat. No. A300-654A Lot3) used at a dilution of 1:200 (1 µg/ml). *Detection:* DAB