

# KIAA0310 Antibody

Rabbit Polyclonal

Antigen Affinity Purified

Protein ID O15027

Catalog No. A300-648A

GeneID 9919

Lot No. A300-648A-1



**APPLICATIONS** WB, IP

**SPECIES REACTIVITY** Human

**AMOUNT** 100 µl

**CONCENTRATION** 200 µg/ml

**STORAGE/SHELF LIFE** 2 – 8° C / 1 year from date of receipt

**PHYSICAL STATE** Liquid

**BUFFER** Tris-buffered Saline containing 0.1% BSA and 0.09% Sodium Azide

**ISOTYPE** IgG

**ORIGIN** USA

**PRODUCTION PROCEDURES** Antibody was affinity purified using an epitope specific to KIAA0310 immobilized on solid support.

The epitope recognized by A300-648A maps to a region between residues 600 and 650 of human KIAA0310 using the numbering given in entry O15027 (GeneID 9919).

Immunoglobulin concentration was determined by extinction coefficient: absorbance at 280 nm of 1.4 equals 1.0 mg of IgG.

**APPLICATIONS** Centrifuge tube to remove product from lid. Optimal working dilutions should be determined experimentally by the investigator. Prepare working dilution immediately before use.

Western Blot 1:2,000 – 1:10,000

Immunoprecipitation 1 – 4 µg/mg lysate

**APPLICATION NOTES** Western blot of immunoprecipitates performed using Normal Pig Serum (Cat. No. S100-020), Goat anti-Rabbit Light Chain HRP Conjugate (Cat. No. A120-113P) and 4-8% SDS-PAGE (link to IP-western blot protocol in Additional Info section below).

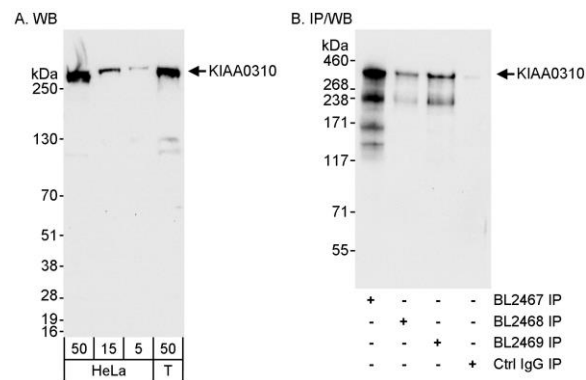
Western blot of lysates performed using standard western blot reagents and 4-8% SDS-PAGE.

**ADDITIONAL INFO** <https://www.bethyl.com/product/A300-648A>

Use the link above to view SDS, a current list of citations, and other product specific information.

IP-western blot protocol: [https://www.bethyl.com/content/protocol\\_IP\\_WB](https://www.bethyl.com/content/protocol_IP_WB)

This document certifies that this product has met all of the quality control standards defined by Bethyl Laboratories, Inc.  
Eric McIntush, PhD | Chief Scientific Officer Date: June 21, 2019



**Detection of human KIAA0310 by western blot and immunoprecipitation.** *Samples:* Whole cell lysate from HeLa (5, 15, and 50 μg for WB; 1 mg for IP) and HEK293T (50 μg for WB) cells. *Antibodies:* Affinity purified rabbit anti-KIAA0310 antibody BL2467 (A300-648A) used for WB at 0.04 μg/ml and for IP at 3 μg/mg lysate. KIAA0310 was also immunoprecipitated by antibodies BL2468 and BL2469, which are to downstream epitopes on KIAA0301. *Detection:* Chemiluminescence with exposure times of 30 seconds (A) and 10 seconds (B).