

Histone H4 Antibody

Rabbit Polyclonal

Antigen Affinity Purified

Protein ID NP_778224.1

Catalog No. A300-646A

GeneID 121504

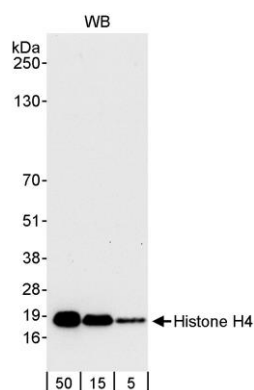
Lot No. A300-646A-1



| | | | | | | | |
|------------------------------|--|--------------|--------------------|---------------------|--------------------|----------------------|--|
| APPLICATIONS | WB, IP, IHC | | | | | | |
| SPECIES REACTIVITY | Human | | | | | | |
| PRESUMED REACTIVITY | Based on 100% sequence identity, this antibody is predicted to react with Mouse, Rat, D. melanogaster, X. laevis, X. tropicalis, Chicken, Bovine, Pig and Orangutan | | | | | | |
| AMOUNT | 100 µl | | | | | | |
| CONCENTRATION | 200 µg/ml | | | | | | |
| STORAGE/SHELF LIFE | 2 – 8° C / 1 year from date of receipt | | | | | | |
| PHYSICAL STATE | Liquid | | | | | | |
| BUFFER | Tris-buffered Saline containing 0.1% BSA and 0.09% Sodium Azide | | | | | | |
| ISOTYPE | IgG | | | | | | |
| ORIGIN | USA | | | | | | |
| PRODUCTION PROCEDURES | <p>Antibody was affinity purified using an epitope specific to Histone H4 immobilized on solid support.</p> <p>The epitope recognized by A300-646A maps to a region between residues 1 and 50 of human Histone H4 using the numbering given in entry NP_778224.1 (GeneID 121504).</p> <p>Immunoglobulin concentration was determined by extinction coefficient: absorbance at 280 nm of 1.4 equals 1.0 mg of IgG.</p> | | | | | | |
| APPLICATIONS | <p>Centrifuge tube to remove product from lid. Optimal working dilutions should be determined experimentally by the investigator. Prepare working dilution immediately before use.</p> <table><tr><td>Western Blot</td><td>1:2,000 – 1:10,000</td></tr><tr><td>Immunoprecipitation</td><td>1 – 4 µg/mg lysate</td></tr><tr><td>Immunohistochemistry</td><td>1:100 – 1:500. Epitope retrieval with citrate buffer pH 6.0 is recommended for FFPE tissue sections.</td></tr></table> | Western Blot | 1:2,000 – 1:10,000 | Immunoprecipitation | 1 – 4 µg/mg lysate | Immunohistochemistry | 1:100 – 1:500. Epitope retrieval with citrate buffer pH 6.0 is recommended for FFPE tissue sections. |
| Western Blot | 1:2,000 – 1:10,000 | | | | | | |
| Immunoprecipitation | 1 – 4 µg/mg lysate | | | | | | |
| Immunohistochemistry | 1:100 – 1:500. Epitope retrieval with citrate buffer pH 6.0 is recommended for FFPE tissue sections. | | | | | | |
| APPLICATION NOTES | Western blot of immunoprecipitates performed using Normal Pig Serum (Cat. No. S100-020), Goat anti-Rabbit Light Chain HRP Conjugate (Cat. No. A120-113P) and 4-12% SDS-PAGE (link to IP-western blot protocol in Additional Info section below). | | | | | | |
| IHC HUMAN CONTROLS | Western blot of lysates performed using standard western blot reagents and 4-12% SDS-PAGE. Bone Marrow-Metastatic Carcinoma, Breast Carcinoma, Colon Carcinoma, Ovarian Carcinoma, Prostate Carcinoma, Skin Basal Cell Carcinoma, Stomach Adenocarcinoma | | | | | | |
| ADDITIONAL INFO | <p>https://www.bethyl.com/product/A300-646A</p> <p>Use the link above to view SDS, a current list of citations, and other product specific information. IP-western blot protocol: https://www.bethyl.com/content/protocol_IP_WB</p> | | | | | | |

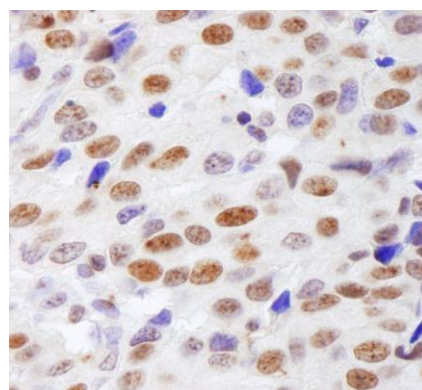
This document certifies that this product has met all of the quality control standards defined by Bethyl Laboratories, Inc.
Eric McIntush, PhD | Chief Scientific Officer

Date: June 21, 2019



Detection of human Histone H4 by western blot. *Samples:* Histone extract (5, 15 and 50 µg) from HeLa cells.

Antibody: Affinity purified rabbit anti-Histone H4 Antibody (Cat. No. A300-646A). *Detection:* Chemiluminescence with an exposure time of 30 seconds.



Detection of human Histone H4 by immunohistochemistry. *Sample:* FFPE section of human breast carcinoma.

Antibody: Affinity purified rabbit anti-Histone H4 (Cat. No. A300-646A Lot1) used at a dilution of 1:200 (1 µg/ml). *Detection:* DAB