

# TORC2 Antibody

Rabbit Polyclonal

Antigen Affinity Purified

Protein ID NP\_859066.1

Catalog No. A300-638A

GeneID 200186

Lot No. A300-638A-1



<b>APPLICATIONS</b>	WB, IP
<b>SPECIES REACTIVITY</b>	Human
<b>AMOUNT</b>	100 µl
<b>CONCENTRATION</b>	200 µg/ml
<b>STORAGE/SHELF LIFE</b>	2 - 8° C / 1 year from date of receipt
<b>PHYSICAL STATE</b>	Liquid
<b>BUFFER</b>	Tris-buffered Saline containing 0.1% BSA and 0.09% Sodium Azide
<b>ISOTYPE</b>	IgG
<b>ORIGIN</b>	USA
<b>PRODUCTION PROCEDURES</b>	Antibody was affinity purified using an epitope specific to TORC2 immobilized on solid support.

The epitope recognized by A300-638A maps to a region between residues 475 and 500 of human Transducer of Regulated cAMP Responsive Element-Binding Protein (CREB) 2 using the numbering given in entry NP\_859066.1 (GeneID 200186).

Immunoglobulin concentration was determined by extinction coefficient: absorbance at 280 nm of 1.4 equals 1.0 mg of IgG.

**APPLICATIONS** Centrifuge tube to remove product from lid. Optimal working dilutions should be determined experimentally by the investigator. Prepare working dilution immediately before use.

Western Blot 1:2,000 - 1:10,000

Immunoprecipitation 1 - 4 µg/mg lysate

**APPLICATION NOTES** Western blot of immunoprecipitates performed using Normal Pig Serum (Cat. No. S100-020), Goat anti-Rabbit Light Chain HRP Conjugate (Cat. No. A120-113P) and 4-8% SDS-PAGE (link to IP-western blot protocol in Additional Info section below).

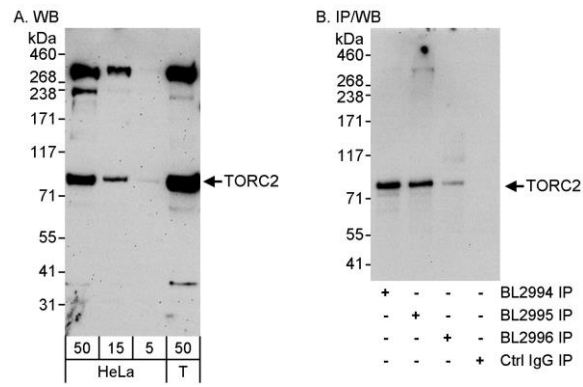
Western blot of lysates performed using standard western blot reagents and 4-8% SDS-PAGE.

**ADDITIONAL INFO** <https://www.bethyl.com/product/A300-638A>

Use the link above to view SDS, a current list of citations, and other product specific information.

IP-western blot protocol: [https://www.bethyl.com/content/protocol\\_IP\\_WB](https://www.bethyl.com/content/protocol_IP_WB)

This document certifies that this product has met all of the quality control standards defined by Bethyl Laboratories, Inc.  
Eric McIntush, PhD | Chief Scientific Officer Date: June 21, 2019



**Detection of human TORC2 by western blot and immunoprecipitation.** *Samples:* Whole cell lysate from HeLa (5, 15 and 50  $\mu\text{g}$  for WB; 1 mg for IP, 20% of IP loaded) and HEK293T (T; 50  $\mu\text{g}$ ) cells. *Antibodies:* Affinity purified rabbit anti-TORC2 antibody BL2995 (Cat. No. A300-638A) used for WB at 0.04  $\mu\text{g}/\text{ml}$  (A) and 1  $\mu\text{g}/\text{ml}$  (B) and for IP at 3  $\mu\text{g}/\text{mg}$  lysate. TORC2 was also immunoprecipitated by rabbit anti-TORC2 antibodies BL2994 (Cat. No. A300-637A) and BL2996. *Detection:* Chemiluminescence with exposure times of 3 minutes (A) and 30 seconds (B).