

TORC2 Antibody

Rabbit Polyclonal

Antigen Affinity Purified	RefSeq ID	NP_859066.1
Catalog No. A300-637A	Uniprot ID	Q53ET0
Lot No. A300-637A-2	GeneID	200186

APPLICATIONS	IP
SPECIES REACTIVITY	Human
PRESUMED REACTIVITY	Based on 100% sequence identity, this antibody is predicted to react with Mouse and Rat
AMOUNT	100 µl
CONCENTRATION	1000 µg/ml
STORAGE/SHELF LIFE	2 – 8°C / 1 year from date of receipt
PHYSICAL STATE	Liquid
BUFFER	Tris-citrate/phosphate buffer, pH 7 to 8 containing 0.09% Sodium Azide
ISOTYPE	IgG
ORIGIN	USA
PRODUCTION PROCEDURES	Antibody was affinity purified using an epitope specific to TORC2 immobilized on solid support.

The epitope recognized by A300-637A maps to a region between residues 300 and 350 of human Transducer of Regulated cAMP Responsive Element-Binding Protein (CREB) 2 using the numbering given in entry NP_859066.1 (GeneID 200186).

Immunoglobulin concentration was determined by extinction coefficient: absorbance at 280 nm of 1.4 equals 1.0 mg of IgG.

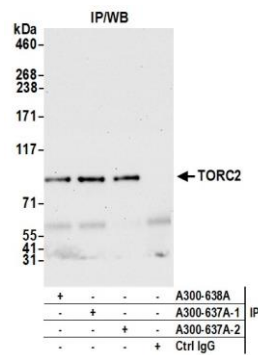
APPLICATIONS Centrifuge tube to remove product from lid. Optimal working dilutions should be determined experimentally by the investigator. Prepare working dilution immediately before use.

Western Blot Not recommended. Use rabbit anti-TORC2 antibody A300-638A.

Immunoprecipitation 2 – 10 µg/mg lysate

ADDITIONAL INFO <https://www.fortislifesciences.com/p/A300-637A>
Use the link above to view SDS, a current list of citations, and other product specific information.

This document certifies that this product has met all of the quality control standards defined by Bethyl Laboratories, Inc.
Michael Spencer, PhD Date: February 27, 2023



Detection of human TORC2 by western blot of immunoprecipitates. *Samples:* Whole cell lysate (1.0 mg per IP reaction; 20% of IP loaded) from HEK293T cells prepared using NETN lysis buffer. *Antibodies:* Affinity purified rabbit anti-TORC2 antibody (A300-637A lot 2) used for IP at 6 μ g per reaction. TORC2 was also immunoprecipitated by a previous lot of this antibody (A300-637A lot 1) and another antibody against a different epitope of TORC2 (A300-638A). For blotting immunoprecipitated TORC2, A300-638A was used at 0.4 μ g/ml. *Detection:* Chemiluminescence with an exposure time of 30 seconds.