

# DDX21 Antibody

Rabbit Polyclonal

Antigen Affinity Purified

Protein ID NP\_004719.2

Catalog No. A300-628A

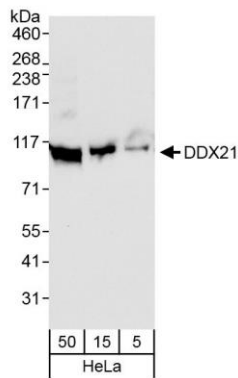
GeneID 9188

Lot No. A300-628A-1

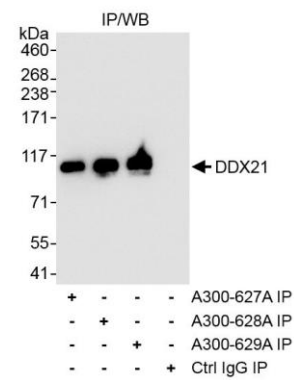


<b>APPLICATIONS</b>	WB, IP				
<b>SPECIES REACTIVITY</b>	Human				
<b>AMOUNT</b>	100 µl				
<b>CONCENTRATION</b>	200 µg/ml				
<b>STORAGE/SHELF LIFE</b>	2 – 8° C / 1 year from date of receipt				
<b>PHYSICAL STATE</b>	Liquid				
<b>BUFFER</b>	Tris-buffered Saline containing 0.1% BSA and 0.09% Sodium Azide				
<b>ISOTYPE</b>	IgG				
<b>ORIGIN</b>	USA				
<b>PRODUCTION PROCEDURES</b>	<p>Antibody was affinity purified using an epitope specific to DDX21 immobilized on solid support.</p> <p>The epitope recognized by A300-628A maps to a region between residues 50 and 100 of human DEAD/H (Asp-Glu-Ala-Asp/His) Box Polypeptide 21 using the numbering given in entry NP_004719.2 (GeneID 9188).</p> <p>Immunoglobulin concentration was determined by extinction coefficient: absorbance at 280 nm of 1.4 equals 1.0 mg of IgG.</p>				
<b>APPLICATIONS</b>	<p>Centrifuge tube to remove product from lid. Optimal working dilutions should be determined experimentally by the investigator. Prepare working dilution immediately before use.</p> <table><tr><td>Western Blot</td><td>1:2,000 – 1:10,000</td></tr><tr><td>Immunoprecipitation</td><td>1 – 4 µg/mg lysate</td></tr></table>	Western Blot	1:2,000 – 1:10,000	Immunoprecipitation	1 – 4 µg/mg lysate
Western Blot	1:2,000 – 1:10,000				
Immunoprecipitation	1 – 4 µg/mg lysate				
<b>APPLICATION NOTES</b>	<p>Western blot of immunoprecipitates performed using Normal Pig Serum (Cat. No. S100-020), Goat anti-Rabbit Light Chain HRP Conjugate (Cat. No. A120-113P) and 4-8% SDS-PAGE (link to IP-western blot protocol in Additional Info section below).</p> <p>Western blot of lysates performed using standard western blot reagents and 4-8% SDS-PAGE.</p>				
<b>ADDITIONAL INFO</b>	<p><a href="https://www.bethyl.com/product/A300-628A">https://www.bethyl.com/product/A300-628A</a></p> <p>Use the link above to view SDS, a current list of citations, and other product specific information. IP-western blot protocol <a href="https://www.bethyl.com/content/protocol_IP_WB">https://www.bethyl.com/content/protocol_IP_WB</a></p>				

This document certifies that this product has met all of the quality control standards defined by Bethyl Laboratories, Inc.  
Eric McIntush, PhD | Chief Scientific Officer Date: October 16, 2019



**Detection of human DDX21 by western blot.** *Samples:* Whole cell lysate from HeLa cells. *Antibodies:* Affinity purified rabbit anti-DDX21 antibody A300-628A (lot A300-628A-1) used for WB at 0.04  $\mu\text{g}/\text{ml}$ . *Detection:* Chemiluminescence with exposure time of 10 seconds.



**Detection of human DDX21 by western blot of immunoprecipitates.** *Samples:* Whole cell lysate (1 mg for IP, 20% of IP loaded) from HeLa cells. *Antibodies:* Affinity purified rabbit anti-DDX21 antibody A300-628A (lot A300-628A-1) used for IP at 3  $\mu\text{g}/\text{mg}$  lysate. DDX21 was also immunoprecipitated using rabbit anti-DDX21 antibodies A300-627A and A300-629A at 3  $\mu\text{g}/\text{mg}$  lysate. For blotting immunoprecipitated DDX21, A300-628A was used at 1  $\mu\text{g}/\text{ml}$ . *Detection:* Chemiluminescence with exposure time of 3 seconds.