

ErbB2 Antibody

Rabbit Polyclonal

Antigen Affinity Purified

Protein ID NP_004439.2

Catalog No. A300-621A

GeneID 2064

Lot No. A300-621A-1



APPLICATIONS	WB, IP, IHC
SPECIES REACTIVITY	Human
PRESUMED REACTIVITY	Based on 100% sequence identity, this antibody is predicted to react with Dog
AMOUNT	100 µl
CONCENTRATION	200 µg/ml
STORAGE/SHELF LIFE	2 - 8° C / 1 year from date of receipt
PHYSICAL STATE	Liquid
BUFFER	Tris-buffered Saline containing 0.1% BSA and 0.09% Sodium Azide
ISOTYPE	IgG
ORIGIN	USA
PRODUCTION PROCEDURES	Antibody was affinity purified using an epitope specific to ErbB2 immobilized on solid support.

The epitope recognized by A300-621A maps to a region between residues 975 and 1025 of human v-erb-b2 erythroblastic leukemia viral oncogene homolog 2 using the numbering given in entry NP_004439.2 (GeneID 2064).

Immunoglobulin concentration was determined by extinction coefficient: absorbance at 280 nm of 1.4 equals 1.0 mg of IgG.

APPLICATIONS Centrifuge tube to remove product from lid. Optimal working dilutions should be determined experimentally by the investigator. Prepare working dilution immediately before use.

Western Blot 1:2,000 - 1:10,000

Immunoprecipitation 1 - 4 µg/mg lysate

Immunohistochemistry 1:100 - 1:500. Epitope retrieval with Tris-EDTA pH 9.0 is recommended for FFPE tissue sections.

APPLICATION NOTES Western blot of immunoprecipitates performed using Normal Pig Serum (Cat. No. S100-020), Goat anti-Rabbit Light Chain HRP Conjugate (Cat. No. A120-113P) and 4-8% SDS-PAGE (link to IP-western blot protocol in Additional Info section below).

Western blot of lysates performed using standard western blot reagents and 4-8% SDS-PAGE.

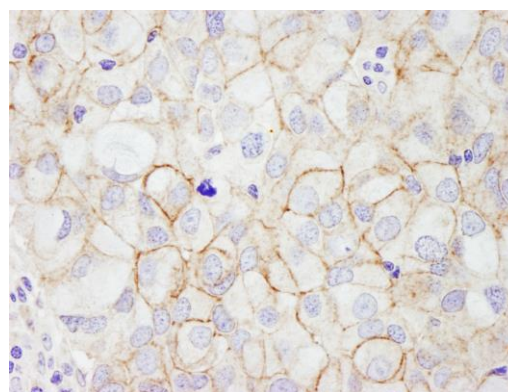
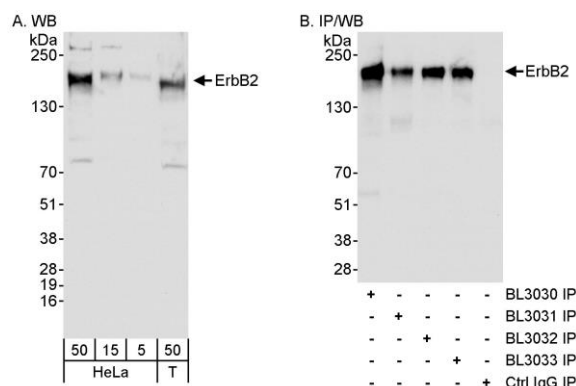
IHC HUMAN CONTROLS Breast Carcinoma

ADDITIONAL INFO <https://www.bethyl.com/product/A300-621A>

Use the link above to view SDS, a current list of citations, and other product specific information.

IP-western blot protocol: https://www.bethyl.com/content/protocol_IP_WB

This document certifies that this product has met all of the quality control standards defined by Bethyl Laboratories, Inc.
Eric McIntush, PhD | Chief Scientific Officer Date: June 21, 2019



Detection of human ErbB2 by western blot and immunoprecipitation. *Samples:* Whole cell lysate from HeLa (5, 15 and 50 µg for WB; 1 mg for IP, 20% of IP loaded) and HEK293T (T; 50 µg for WB) cells. *Antibodies:* Affinity purified rabbit anti-ErbB2 antibody BL3030 (Cat. No. A300-621A) used for WB at 1 µg/ml (A) and 0.04 µg/ml (B) and used for IP at 3 µg/mg lysate. ErbB2 was also immunoprecipitated using rabbit anti-ErbB2 antibodies BL3031, BL3032 (Cat. No. A300-622A) and BL3033 (Cat. No. A300-623A) at 3 µg/mg lysate. *Detection:* Chemiluminescence with exposure times of 10 seconds (A and B).

Detection of human ErbB2 by immunohistochemistry. *Sample:* FFPE section of human breast carcinoma. *Antibody:* Affinity purified rabbit anti-ErbB2 (Cat. No. A300-621A Lot1) used at a dilution of 1:200 (1 µg/ml). *Detection:* DAB