

# CHK2 Antibody

Rabbit Polyclonal

Antigen Affinity Purified

Protein ID NP\_009125.1

Catalog No. A300-620A

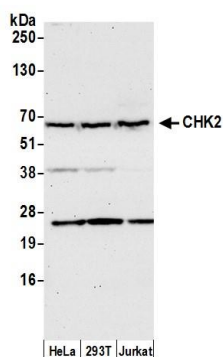
GeneID 11200

Lot No. A300-620A-2

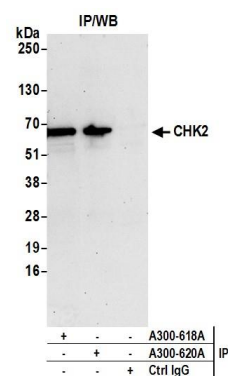


<b>APPLICATIONS</b>	WB, IP
<b>SPECIES REACTIVITY</b>	Human
<b>AMOUNT</b>	100 µl
<b>CONCENTRATION</b>	200 µg/ml
<b>STORAGE/SHELF LIFE</b>	2 – 8° C / 1 year from date of receipt
<b>PHYSICAL STATE</b>	Liquid
<b>BUFFER</b>	Tris-buffered Saline containing 0.1% BSA and 0.09% Sodium Azide
<b>ISOTYPE</b>	IgG
<b>ORIGIN</b>	USA
<b>PRODUCTION PROCEDURES</b>	Antibody was affinity purified using an epitope specific to Chk2 immobilized on solid support.  The epitope recognized by A300-620A maps to a region between residue 500 and the C-terminus (residue 543) of human Checkpoint Kinase 2 using the numbering given in entry NP_009125.1 (GeneID 11200).  Immunoglobulin concentration was determined by extinction coefficient: absorbance at 280 nm of 1.4 equals 1.0 mg of IgG.
<b>APPLICATIONS</b>	Centrifuge tube to remove product from lid. Optimal working dilutions should be determined experimentally by the investigator. Prepare working dilution immediately before use.  Western Blot 1:2,000 – 1:10,000  Immunoprecipitation 2 – 10 µg/mg lysate
<b>APPLICATION NOTES</b>	Western blot of immunoprecipitates performed using Normal Pig Serum (Cat. No. S100-020), Goat anti-Rabbit Light Chain HRP Conjugate (Cat. No. A120-113P) and 4-20% SDS-PAGE (link to IP-western blot protocol in Additional Info section below).  Western blot of lysates performed using standard western blot reagents and 4-20% SDS-PAGE.
<b>ADDITIONAL INFO</b>	<a href="https://www.bethyl.com/product/A300-620A">https://www.bethyl.com/product/A300-620A</a> Use the link above to view SDS, a current list of citations, and other product specific information. IP-western blot protocol: <a href="https://www.bethyl.com/content/protocol_IP_WB">https://www.bethyl.com/content/protocol_IP_WB</a>

This document certifies that this product has met all of the quality control standards defined by Bethyl Laboratories, Inc.  
Eric McIntush, PhD | Chief Scientific Officer Date: June 21, 2019



**Detection of human CHK2 by western blot.** *Samples:* Whole cell lysate (50  $\mu$ g) from HeLa, HEK293T, and Jurkat cells prepared using NETN lysis buffer. *Antibody:* Affinity purified rabbit anti-CHK2 antibody A300-620A (lot A300-620A-2) used for WB at 0.04  $\mu$ g/ml. *Detection:* Chemiluminescence with an exposure time of 75 seconds.



**Detection of human CHK2 by western blot of immunoprecipitates.** *Samples:* Whole cell lysate (1.0 mg per IP reaction; 20% of IP loaded) from HeLa cells prepared using NETN lysis buffer. *Antibodies:* Affinity purified rabbit anti-CHK2 antibody A300-620A (lot A300-620A-2) used for IP at 6  $\mu$ g per reaction. CHK2 was also immunoprecipitated by rabbit anti-CHK2 antibody A300-618A. For blotting immunoprecipitated CHK2, A300-620A was used at 0.4  $\mu$ g/ml. *Detection:* Chemiluminescence with an exposure time of 30 seconds.