

AF9 Antibody

Rabbit Polyclonal

Antigen Affinity Purified

Protein ID NP_004520.1

Catalog No. A300-595A

GeneID 4300

Lot No. A300-595A-2



APPLICATIONS	WB, IP
SPECIES REACTIVITY	Human, Mouse
AMOUNT	100 µl
CONCENTRATION	200 µg/ml
STORAGE/SHELF LIFE	2 – 8° C / 1 year from date of receipt
PHYSICAL STATE	Liquid
BUFFER	Tris-buffered Saline containing 0.1% BSA and 0.09% Sodium Azide
ISOTYPE	IgG
ORIGIN	USA
PRODUCTION PROCEDURES	Antibody was affinity purified using an epitope specific to AF9 immobilized on solid support.

The epitope recognized by A300-595A maps to a region between residues 200 and 250 of human ALL1 Fused Gene from Chromosome 9 Protein (MLLT3, Myeloid/Lymphoid or Mixed-Lineage Leukemia Translocate 3) using the numbering given in entry NP_004520.1 (GeneID 4300).

Immunoglobulin concentration was determined by extinction coefficient: absorbance at 280 nm of 1.4 equals 1.0 mg of IgG.

APPLICATIONS Centrifuge tube to remove product from lid. Optimal working dilutions should be determined experimentally by the investigator. Prepare working dilution immediately before use.

Western Blot 1:2,000 – 1:10,000

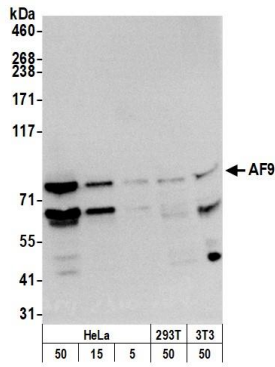
Immunoprecipitation 2 – 10 µg/mg lysate

ADDITIONAL INFO <https://www.bethyl.com/product/A300-595A>

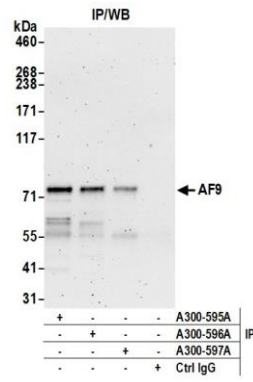
Use the link above to view SDS, a current list of citations, and other product specific information.

IP-western blot protocol: https://www.bethyl.com/content/protocol_IP_WB

This document certifies that this product has met all of the quality control standards defined by Bethyl Laboratories, Inc.
Brian McWilliams, PhD Date: December 28, 2020



Detection of human and mouse AF9 by western blot.
Samples: Whole cell lysate from HeLa (5, 15 and 50 µg), and HEK293T (50µg), and mouse NIH 3T3 (50µg) cells prepared using NETN lysis buffer. *Antibody:* Affinity purified rabbit anti-AF9 antibody A300-595A (lot A300-595A-2) used for WB at 0.04 µg/ml. *Detection:* Chemiluminescence with an exposure time of 3 minutes.



Detection of Human AF9 by Western Blot of Immunoprecipitates. *Samples:* Whole cell lysate (0.5 or 1.0 mg per IP reaction; 20% of IP loaded) from HeLa (50µg) cells prepared using NETN lysis buffer. *Antibodies:* Affinity purified rabbit anti-AF9 antibody A300-595A (lot A300-595A-2) used for IP at 6 µg per reaction. AF9 was also immunoprecipitated rabbit anti-AF9 antibodies A300-597A and A300-597A. For blotting immunoprecipitated AF9, A300-595A was used at 1 µg/ml. *Detection:* Chemiluminescence with an exposure time of 3 minutes.