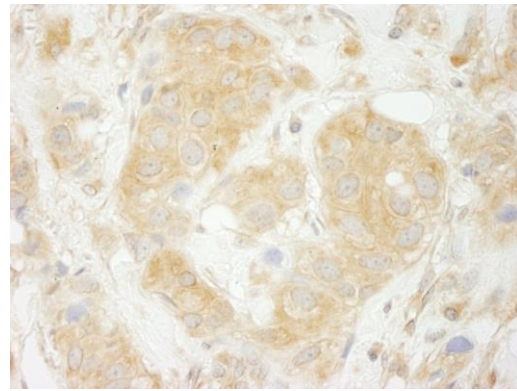


Detection of human Sec23IP(MSTP053) by western blot. **expndtw-6** *Samples:* Whole cell lysate from HeLa (5, 15 and 50 µg) and HEK293T (T; 50 µg) cells. *Antibody:* Affinity purified rabbit anti-Sec23IP(MSTP053) antibody (Cat. No. A300-593A) used for WB at 0.04 µg/ml. *Detection:* Chemiluminescence with exposure times of 3 minutes.



Detection of human Sec23IP(MSTP053) by immunohistochemistry. *Sample:* FFPE section of human breast carcinoma. *Antibody:* Affinity purified rabbit anti-expndtw-6 Sec23IP(MSTP053) (Cat. No. A300-593A Lot1) used at a dilution of 1:200 (1 µg/ml). *Detection:* DAB