

# WASP Antibody

Rabbit Polyclonal

Antigen Affinity Purified

Protein ID NP\_000368.1

Catalog No. A300-581A

GeneID 7454

Lot No. A300-581A-1



APPLICATIONS	WB, IP
SPECIES REACTIVITY	Human
AMOUNT	100 µl
CONCENTRATION	200 µg/ml
STORAGE/SHELF LIFE	2 – 8° C / 1 year from date of receipt
PHYSICAL STATE	Liquid
BUFFER	Tris-buffered Saline containing 0.1% BSA and 0.09% Sodium Azide
ISOTYPE	IgG
ORIGIN	USA
PRODUCTION PROCEDURES	Antibody was affinity purified using an epitope specific to WASP immobilized on solid support.

The epitope recognized by A300-581A maps to a region between residue 400 and the C-terminus (residue 462) of human Wiskott-Aldrich Syndrome Protein using the numbering given in entry NP\_000368.1 (GeneID 7454).

Immunoglobulin concentration was determined by extinction coefficient: absorbance at 280 nm of 1.4 equals 1.0 mg of IgG.

**APPLICATIONS** Centrifuge tube to remove product from lid. Optimal working dilutions should be determined experimentally by the investigator. Prepare working dilution immediately before use.

Western Blot 1:2,000 – 1:10,000

Immunoprecipitation 1 – 4 µg/mg lysate

**APPLICATION NOTES** Western blot of immunoprecipitates performed using Normal Pig Serum (Cat. No. S100-020), Goat anti-Rabbit Light Chain HRP Conjugate (Cat. No. A120-113P) and 4-20% SDS-PAGE (link to IP-western blot protocol in Additional Info section below).

Western blot of lysates performed using standard western blot reagents and 4-20% SDS-PAGE.

**ADDITIONAL INFO** <https://www.bethyl.com/product/A300-581A>

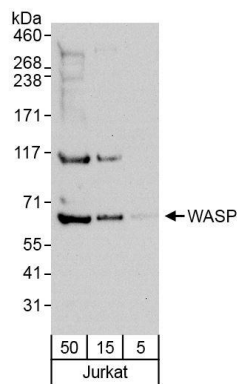
Use the link above to view SDS, a current list of citations, and other product specific information.

IP-western blot protocol [https://www.bethyl.com/content/protocol\\_IP\\_WB](https://www.bethyl.com/content/protocol_IP_WB)

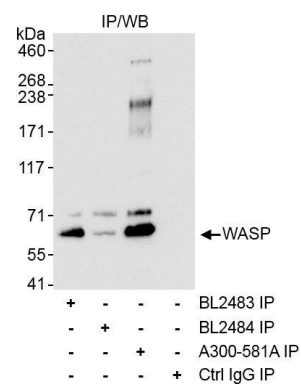
This document certifies that this product has met all of the quality control standards defined by Bethyl Laboratories, Inc.

Eric McIntush, PhD | Chief Scientific Officer

Date: October 16, 2019



**Detection of human WASP by western blot.** *Samples:* Whole cell lysate from Jurkat cells. *Antibodies:* Affinity purified rabbit anti-WASP antibody A300-581A (lot A300-581A-1) used for WB at 0.4 µg/ml. *Detection:* Chemiluminescence with exposure time of 30 seconds.



**Detection of human WASP by western blot of immunoprecipitates.** *Samples:* Whole cell lysate (1 mg for IP, 1 / 4 of IP reaction loaded) from Jurkat cells. *Antibodies:* Affinity purified rabbit anti-WASP antibody A300-581A (lot A300-581A-1) used for IP at 3 µg/mg lysate. WASP was also immunoprecipitated using rabbit anti-WASP antibodies BL2483 and BL2484. For blotting immunoprecipitated WASP, A300-581A was used at 1 µg/ml. *Detection:* Chemiluminescence with exposure time 10 seconds.