

NF2 Antibody

Rabbit Polyclonal

Antigen Affinity Purified

Protein ID NP_057502.2

Catalog No. A300-579A

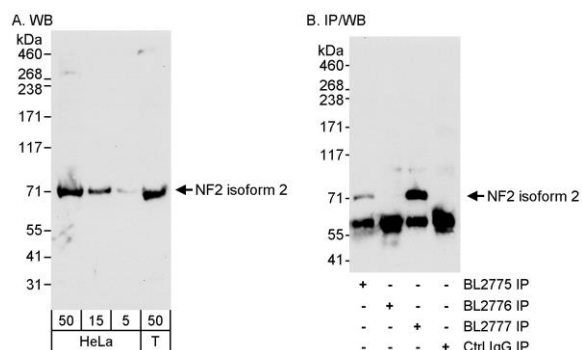
GeneID 4771

Lot No. A300-579A-1



APPLICATIONS	WB, IP				
SPECIES REACTIVITY	Human				
PRESUMED REACTIVITY	Based on 100% sequence identity, this antibody is predicted to react with Rat				
AMOUNT	100 µl				
CONCENTRATION	1000 µg/ml				
STORAGE/SHELF LIFE	2 - 8° C / 1 year from date of receipt				
PHYSICAL STATE	Liquid				
BUFFER	Tris-citrate/phosphate buffer, pH 7 to 8 containing 0.09% Sodium Azide				
ISOTYPE	IgG				
ORIGIN	USA				
PRODUCTION PROCEDURES	<p>Antibody was affinity purified using an epitope specific to NF2 immobilized on solid support.</p> <p>The epitope recognized by A300-579A maps to a region between residue 550 and the C-terminus (residue 590) of human Neurofibromin 2 using the numbering given in entry NP_057502.2 (GeneID 4771). This epitope is common to NF2 isoforms 2, 5 (NP_861966.1), 6 (NP_861967.1) and 7 (NP_861968.1).</p> <p>Immunoglobulin concentration was determined by extinction coefficient: absorbance at 280 nm of 1.4 equals 1.0 mg of IgG.</p>				
APPLICATIONS	<p>Centrifuge tube to remove product from lid. Optimal working dilutions should be determined experimentally by the investigator. Prepare working dilution immediately before use.</p> <table><tr><td>Western Blot</td><td>1:5,000 - 1:15,000</td></tr><tr><td>Immunoprecipitation</td><td>1 - 4 µg/mg lysate</td></tr></table>	Western Blot	1:5,000 - 1:15,000	Immunoprecipitation	1 - 4 µg/mg lysate
Western Blot	1:5,000 - 1:15,000				
Immunoprecipitation	1 - 4 µg/mg lysate				
APPLICATION NOTES	<p>Western blot of immunoprecipitates performed using Normal Pig Serum (Cat. No. S100-020), Goat anti-Rabbit Light Chain HRP Conjugate (Cat. No. A120-113P) and 4-8% SDS-PAGE (link to IP-western blot protocol in Additional Info section below).</p> <p>Western blot of lysates performed using standard western blot reagents and 4-8% SDS-PAGE.</p>				
ADDITIONAL INFO	<p>https://www.bethyl.com/product/A300-579A</p> <p>Use the link above to view SDS, a current list of citations, and other product specific information.</p> <p>IP-western blot protocol: https://www.bethyl.com/content/protocol_IP_WB</p>				

This document certifies that this product has met all of the quality control standards defined by Bethyl Laboratories, Inc.
Eric McIntush, PhD | Chief Scientific Officer Date: June 21, 2019



Detection of Isoform 2 of human NF2 by western blot and immunoprecipitation. *Samples:* Whole cell lysate from HeLa (5, 15, and 15 μ g for WB; 1 mg for IP, 1/4 of IP reaction loaded) and NIH293 (50 μ g for WB) cells. *Antibody:* Affinity purified rabbit anti-NF2 antibody BL2777 (Cat. No. A300-579A) used for western blot at 0.1 μ g/ml (A) and 1 μ g/ml (B) for IP at 3 μ g/mg lysate for IP (B). Isoform 2 of NF2 was also immunoprecipitated using rabbit anti-NF2 antibody BL2775, which is to an upstream epitope also found in isoform 1. Isoform 2 was not immunoprecipitated using rabbit anti-NF2 isoform 1 antibody BL2776 (Cat. No. A300-578A). *Detection:* Chemiluminescence with an exposure time of 30 seconds (A and B).