

# INPPL1 /SHIP2 Antibody

Rabbit Polyclonal

Antigen Affinity Purified

Protein ID NP\_001558.2

Catalog No. A300-574A

GeneID 3636

Lot No. A300-574A-2



<b>APPLICATIONS</b>	WB, IP, IHC
<b>SPECIES REACTIVITY</b>	Human, Mouse
<b>PRESUMED REACTIVITY</b>	Based on 100% sequence identity, this antibody is predicted to react with Rat
<b>AMOUNT</b>	100 µl
<b>CONCENTRATION</b>	1000 µg/ml
<b>STORAGE/SHELF LIFE</b>	2 - 8° C / 1 year from date of receipt
<b>PHYSICAL STATE</b>	Liquid
<b>BUFFER</b>	Tris-citrate/phosphate buffer, pH 7 to 8 containing 0.09% Sodium Azide
<b>ISOTYPE</b>	IgG
<b>ORIGIN</b>	USA
<b>PRODUCTION PROCEDURES</b>	Antibody was affinity purified using an epitope specific to INPPL1 /SHIP2 immobilized on solid support.

The epitope recognized by A300-574A maps to a region between residues 100 and 150 of human inositol polyphosphate phosphatase-like 1 using the numbering given in entry NP\_001558.2 (GeneID 3636).

Immunoglobulin concentration was determined by extinction coefficient: absorbance at 280 nm of 1.4 equals 1.0 mg of IgG.

**APPLICATIONS** Centrifuge tube to remove product from lid. Optimal working dilutions should be determined experimentally by the investigator. Prepare working dilution immediately before use.

Western Blot 1:2,000 - 1:10,000

Immunoprecipitation 2 - 10 µg/mg lysate

Immunohistochemistry 1:500 - 1:2,000. Epitope retrieval with citrate buffer pH 6.0 or Tris-EDTA pH 9.0 is recommended for FFPE tissue sections.

**APPLICATION NOTES** Western blot of immunoprecipitates performed using Normal Pig Serum (Cat. No. S100-020), Goat anti-Rabbit Light Chain HRP Conjugate (Cat. No. A120-113P) and 4-8% SDS-PAGE (link to IP-western blot protocol in Additional Info section below).

Western blot of lysates performed using standard western blot reagents and 4-8% SDS-PAGE.

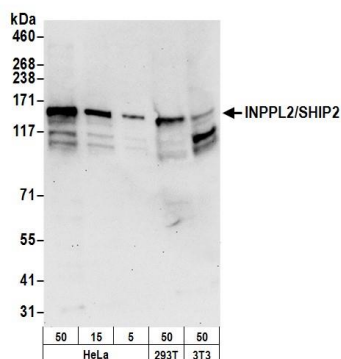
**IHC HUMAN CONTROLS** Colon Carcinoma

**ADDITIONAL INFO** <https://www.bethyl.com/product/A300-574A>

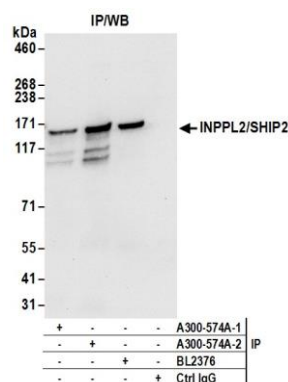
Use the link above to view SDS, a current list of citations, and other product specific information.

IP-western blot protocol: [https://www.bethyl.com/content/protocol\\_IP\\_WB](https://www.bethyl.com/content/protocol_IP_WB)

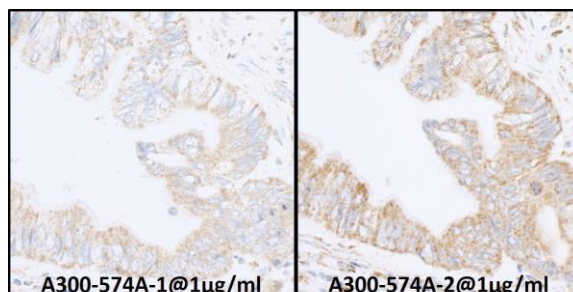
This document certifies that this product has met all of the quality control standards defined by Bethyl Laboratories, Inc.  
Eric McIntush, PhD | Chief Scientific Officer Date: June 21, 2019



**Detection of human and mouse INPPL2/SHIP2 by western blot.** *Samples:* Whole cell lysate (50, 15, 5 µg) from HeLa and (50 µg) from HEK293T and mouse NIH 3T3 cells prepared using NETN lysis buffer. *Antibody:* Affinity purified rabbit anti-INPPL2/SHIP2 antibody A300-574A (lot A300-574A-2) used for WB at 0.1 µg/ml. *Detection:* Chemiluminescence with an exposure time of 30 seconds.



**Detection of human INPPL2/SHIP2 by western blot of immunoprecipitates.** *Samples:* Whole cell lysate (0.5 or 1.0 mg per IP reaction; 20% of IP loaded) from HeLa cells prepared using NETN lysis buffer. *Antibodies:* Affinity purified rabbit anti-INPPL2/SHIP2 antibody A300-574A (lot A300-574A-2) used for IP at 6 µg per reaction. INPPL2/SHIP2 was also immunoprecipitated by a previous lot of this antibody (A300-574A-1) and rabbit anti-INPPL2/SHIP2 antibody BL2376. For blotting immunoprecipitated INPPL2/SHIP2, A300-574A was used at 0.4 µg/ml. *Detection:* Chemiluminescence with an exposure time of 10 seconds.



**Detection of human expndtw-6 INPPL1/SHIP2 by immunohistochemistry.** *Sample:* FFPE serial sections of human colon carcinoma. *Antibody:* Affinity purified rabbit anti-expndtw-6 INPPL1/SHIP2 Cat. No. A300-574A Lot 1 (left) and Lot 2 (right) used at a dilution of 1:1,000 (1 µg/ml). *Detection:* DAB