

BLM Antibody

Rabbit Polyclonal

Antigen Affinity Purified

Protein ID NP_031576.2

Catalog No. A300-570A

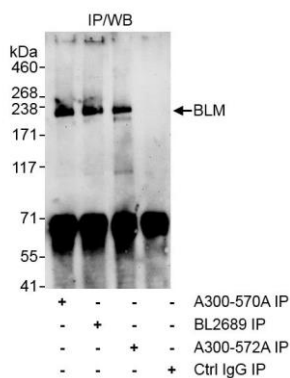
GeneID 12144

Lot No. A300-570A-1



APPLICATIONS	IP
SPECIES REACTIVITY	Mouse
AMOUNT	100 µl
CONCENTRATION	1000 µg/ml
STORAGE/SHELF LIFE	2 - 8° C / 1 year from date of receipt
PHYSICAL STATE	Liquid
BUFFER	Tris-citrate/phosphate buffer, pH 7 to 8 containing 0.09% Sodium Azide
ISOTYPE	IgG
ORIGIN	USA
PRODUCTION PROCEDURES	<p>Antibody was affinity purified using an epitope specific to BIm immobilized on solid support.</p> <p>The epitope recognized by A300-570A maps to a region between residues 1 and 50 of mouse Bloom Syndrome Homolog using the numbering given in entry NP_031576.2 (GeneID 12144).</p> <p>Immunoglobulin concentration was determined by extinction coefficient: absorbance at 280 nm of 1.4 equals 1.0 mg of IgG.</p>
APPLICATIONS	<p>Centrifuge tube to remove product from lid. Optimal working dilutions should be determined experimentally by the investigator. Prepare working dilution immediately before use.</p> <p>Western Blot Not recommended. Use rabbit anti-BLM antibody A300-572A for WB of mouse BLM.</p> <p>Immunoprecipitation 1 - 4 µg/mg lysate</p>
APPLICATION NOTES	Western blot of immunoprecipitates performed using Normal Pig Serum (Cat. No. S100-020), Goat anti-Rabbit Light Chain HRP Conjugate (Cat. No. A120-113P) and 4-8% SDS-PAGE (link to IP-western blot protocol in Additional Info section below).
ADDITIONAL INFO	<p>https://www.bethyl.com/product/A300-570A</p> <p>Use the link above to view SDS, a current list of citations, and other product specific information. IP-western blot protocol: https://www.bethyl.com/content/protocol_IP_WB</p>

This document certifies that this product has met all of the quality control standards defined by Bethyl Laboratories, Inc.
Eric McIntush, PhD | Chief Scientific Officer Date: June 21, 2019



Detection of mouse BLM by western blot of immunoprecipitates. *Samples:* Whole cell lysate (1 mg for IP, 1/4 of IP loaded) from mouse NIH 3T3 cells. *Antibodies:* Affinity purified rabbit anti-BLM antibody A300-570A (lot A300-570A-1) used for IP at 3 $\mu\text{g}/\text{mg}$ lysate. BLM was also immunoprecipitated using rabbit anti-BLM antibodies BL2689 and A300-572A at 3 $\mu\text{g}/\text{mg}$ lysate. immunoprecipitated BLM was blotted using A300-572A at 1 $\mu\text{g}/\text{ml}$. *Detection:* Chemiluminescence with an exposure time of 3 minutes.