

BRIP1 /BACH1 Antibody

Rabbit Polyclonal

Antigen Affinity Purified

Protein ID NP_114432.1

Catalog No. A300-561A

GeneID 83990

Lot No. A300-561A-1



APPLICATIONS	WB, IP
SPECIES REACTIVITY	Human
AMOUNT	100 µl
CONCENTRATION	200 µg/ml
STORAGE/SHELF LIFE	2 – 8° C / 1 year from date of receipt
PHYSICAL STATE	Liquid
BUFFER	Tris-buffered Saline containing 0.1% BSA and 0.09% Sodium Azide
ISOTYPE	IgG
ORIGIN	USA
PRODUCTION PROCEDURES	Antibody was affinity purified using an epitope specific to BRIP1 /BACH1 immobilized on solid support.

The epitope recognized by A300-561A maps to a region between residue 1200 and the C-terminus (residue 1249) of human Brca1 Interacting Protein C-terminal Helicase 1 using the numbering given in entry NP_114432.1 (GeneID 83990).

Immunoglobulin concentration was determined by extinction coefficient: absorbance at 280 nm of 1.4 equals 1.0 mg of IgG.

APPLICATIONS Centrifuge tube to remove product from lid. Optimal working dilutions should be determined experimentally by the investigator. Prepare working dilution immediately before use.

Western Blot 1:1,000 – 1:10,000

Immunoprecipitation 1 – 4 µg/mg lysate

APPLICATION NOTES Western blot of immunoprecipitates performed using Normal Pig Serum (Cat. No. S100-020), Goat anti-Rabbit Light Chain HRP Conjugate (Cat. No. A120-113P) and 4-8% SDS-PAGE (link to IP-western blot protocol in Additional Info section below).

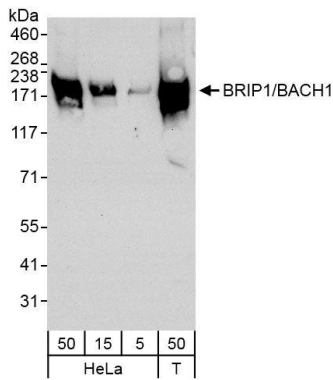
Western blot of lysates performed using standard western blot reagents and 4-8% SDS-PAGE.

ADDITIONAL INFO <https://www.bethyl.com/product/A300-561A>

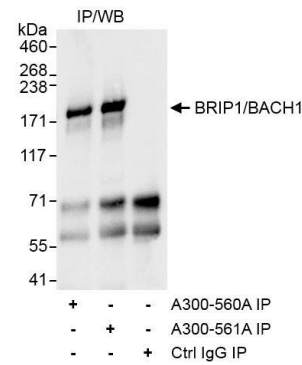
Use the link above to view SDS, a current list of citations, and other product specific information.

IP-western blot protocol https://www.bethyl.com/content/protocol_IP_WB

This document certifies that this product has met all of the quality control standards defined by Bethyl Laboratories, Inc.
Eric McIntush, PhD | Chief Scientific Officer Date: October 16, 2019

**Detection of human BRIP1/BACH1 by western blot.**

Samples: Whole cell lysate from HeLa (5, 15 and 50 µg) and HEK293T (T; 50 µg) cells. *Antibody:* Affinity purified rabbit anti-BRIP1/BACH1 antibody A300-561A (lot A300-561A-1) used for WB at 0.04 µg/ml. *Detection:* Chemiluminescence with exposure time of 30 seconds.

**Detection of human BRIP1/BACH1 by western blot of immunoprecipitates.**

Samples: Whole cell lysate (1.0 mg per IP reaction; 20% of IP loaded) from HeLa cells. *Antibody:* Affinity purified rabbit anti-BRIP1/BACH1 antibody A300-561A (lot A300-561A-1) used for IP at 3 µg/mg lysate. BRIP1/BACH1 was also immunoprecipitated using rabbit anti-BRIP1/BACH1 antibody A300-560A, which is to an upstream epitope, at 3 µg/mg lysate. For blotting immunoprecipitated BRIP1/BACH1, A300-561A was used at 1 µg/ml. *Detection:* Chemiluminescence with exposure time of 10 seconds.