

SYK Antibody

Rabbit Polyclonal

Antigen Affinity Purified

Protein ID NP_003168.2

Catalog No. A300-558A

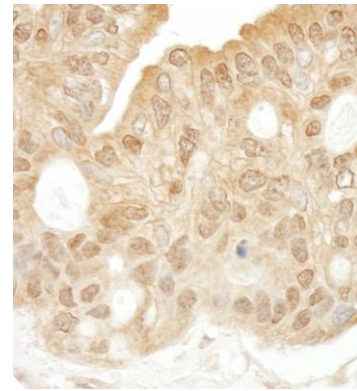
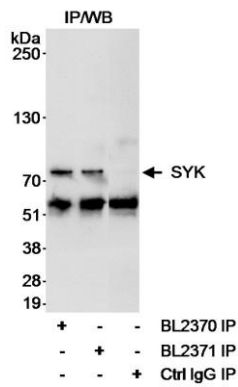
GeneID 6850

Lot No. A300-558A-1



APPLICATIONS	IP, IHC
SPECIES REACTIVITY	Human
AMOUNT	100 µl
CONCENTRATION	1000 µg/ml
STORAGE/SHELF LIFE	2 - 8° C / 1 year from date of receipt
PHYSICAL STATE	Liquid
BUFFER	Tris-citrate/phosphate buffer, pH 7 to 8 containing 0.09% Sodium Azide
ISOTYPE	IgG
ORIGIN	USA
PRODUCTION PROCEDURES	Antibody was affinity purified using an epitope specific to SYK immobilized on solid support. The epitope recognized by A300-558A maps to a region between residues 250 and 300 of human Spleen Tyrosine Kinase using the numbering given in entry NP_003168.2 (GeneID 6850). Immunoglobulin concentration was determined by extinction coefficient: absorbance at 280 nm of 1.4 equals 1.0 mg of IgG.
APPLICATIONS	Centrifuge tube to remove product from lid. Optimal working dilutions should be determined experimentally by the investigator. Prepare working dilution immediately before use. Western Blot Not recommended. Use rabbit anti-SYK antibody A300-559A. Immunoprecipitation 1 - 4 µg/mg lysate Immunohistochemistry 1:500 - 1:2,000. Epitope retrieval with Tris-EDTA pH 9.0 is recommended for FFPE tissue sections.
APPLICATION NOTES	Western blot of immunoprecipitates performed using Normal Pig Serum (Cat. No. S100-020), Goat anti-Rabbit Light Chain HRP Conjugate (Cat. No. A120-113P) and 4-8% SDS-PAGE (link to IP-western blot protocol in Additional Info section below).
IHC HUMAN CONTROLS	Breast Carcinoma, Colon Carcinoma, Ovarian Carcinoma
ADDITIONAL INFO	https://www.bethyl.com/product/A300-558A Use the link above to view SDS, a current list of citations, and other product specific information. IP-western blot protocol: https://www.bethyl.com/content/protocol_IP_WB

This document certifies that this product has met all of the quality control standards defined by Bethyl Laboratories, Inc.
Eric McIntush, PhD | Chief Scientific Officer Date: June 21, 2019



Detection of human SYK by immunoprecipitation.

Samples: Whole cell lysate (1 mg for IP, ¼ of IP loaded) from Jurkat cells. *Antibodies:* Affinity purified rabbit anti-SYK antibody BL2370 (Cat. No. A300-558A) used for IP at 3 µg/mg lysate. SYK was also immunoprecipitated using rabbit anti-SYK antibody BL2371 (Cat. No. A300-559A) at 3 µg/mg lysate. immunoprecipitated SYK was blotted using BL2371 at 1 µg/ml. *Detection:* Chemiluminescence with an exposure time of 30 seconds (B).

Detection of human SYK by immunohistochemistry.

Sample: FFPE section of human ovarian carcinoma. *Antibody:* Affinity purified rabbit anti-SYK (Cat. No. A300-558A Lot1) used at a dilution of 1:1,000 (1 µg/ml). *Detection:* DAB