

# NMI Antibody

Rabbit Polyclonal

Antigen Affinity Purified

Protein ID NP\_004679.1

Catalog No. A300-551A

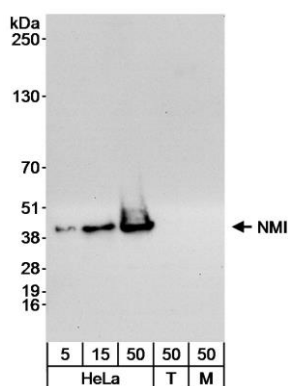
GeneID 9111

Lot No. A300-551A-1

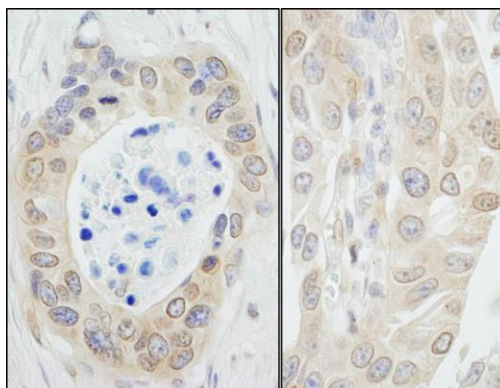


<b>APPLICATIONS</b>	WB, IHC
<b>SPECIES REACTIVITY</b>	Human
<b>AMOUNT</b>	100 $\mu$ l
<b>CONCENTRATION</b>	200 $\mu$ g/ml
<b>STORAGE/SHELF LIFE</b>	2 - 8° C / 1 year from date of receipt
<b>PHYSICAL STATE</b>	Liquid
<b>BUFFER</b>	Tris-buffered Saline containing 0.1% BSA and 0.09% Sodium Azide
<b>ISOTYPE</b>	IgG
<b>ORIGIN</b>	USA
<b>PRODUCTION PROCEDURES</b>	<p>Antibody was affinity purified using an epitope specific to NMI immobilized on solid support.</p> <p>The epitope recognized by A300-551A maps to a region between residue 250 and the C-terminus (residue 307) of human N-myc and STAT interactor using the numbering given in entry NP_004679.1 (GeneID 9111).</p> <p>Immunoglobulin concentration was determined by extinction coefficient: absorbance at 280 nm of 1.4 equals 1.0 mg of IgG.</p>
<b>APPLICATIONS</b>	<p>Centrifuge tube to remove product from lid. Optimal working dilutions should be determined experimentally by the investigator. Prepare working dilution immediately before use.</p> <p>Western Blot 1:2,000 - 1:10,000</p> <p>Immunoprecipitation Not recommended. Use rabbit anti-NMI antibody A300-550A.</p> <p>Immunohistochemistry 1:500 - 1:2,000. Epitope retrieval with citrate buffer pH 6.0 is recommended for FFPE tissue sections.</p>
<b>APPLICATION NOTES</b>	Western blot of lysates performed using standard western blot reagents and 4-20% SDS-PAGE.
<b>IHC HUMAN CONTROLS</b>	Bladder Cell Carcinoma, Colon Carcinoma, Ovarian Carcinoma, Prostate Carcinoma
<b>ADDITIONAL INFO</b>	<p><a href="https://www.bethyl.com/product/A300-551A">https://www.bethyl.com/product/A300-551A</a></p> <p>Use the link above to view SDS, a current list of citations, and other product specific information.</p>

This document certifies that this product has met all of the quality control standards defined by Bethyl Laboratories, Inc.  
Eric McIntush, PhD | Chief Scientific Officer Date: June 21, 2019



**Detection of human NMI by western blot.** *Samples:* Whole cell lysate from HeLa (5, 15 and 50 µg), HEK293T (T; 50 µg) and NIH 3T3 (M; 50 µg) cells. *Antibody:* Affinity purified rabbit anti-NMI antibody (Cat. No. A300-551A) used at 0.04 µg/ml for WB. *Detection:* Chemiluminescence with an exposure time of 30 seconds.



**Detection of human NMI by immunohistochemistry.** *Sample:* FFPE section of human ovarian carcinoma (left) and bladder carcinoma (right). *Antibody:* Affinity purified rabbit anti-NMI (Cat. No. A300-551A Lot1) used at a dilution of 1:1,000 (0.2 µg/ml). *Detection:* DAB