

# ZBTB7/FBI-1 Antibody

Rabbit Polyclonal

Antigen Affinity Purified

Protein ID NP\_056982.1

Catalog No. A300-549A

GeneID 51341

Lot No. A300-549A-1



<b>APPLICATIONS</b>	WB, IP, IHC
<b>SPECIES REACTIVITY</b>	Human
<b>AMOUNT</b>	100 µl
<b>CONCENTRATION</b>	200 µg/ml
<b>STORAGE/SHELF LIFE</b>	2 – 8° C / 1 year from date of receipt
<b>PHYSICAL STATE</b>	Liquid
<b>BUFFER</b>	Tris-buffered Saline containing 0.1% BSA and 0.09% Sodium Azide
<b>ISOTYPE</b>	IgG
<b>ORIGIN</b>	USA
<b>PRODUCTION PROCEDURES</b>	Antibody was affinity purified using an epitope specific to ZBTB7/FBI-1 immobilized on solid support.

The epitope recognized by A300-549A maps to a region between residue 525 and the C-terminus (residue 584) of human ZBTB7 (Factor Binding IST protein 1) using the numbering given in entry NP\_056982.1 (GeneID 51341).

Immunoglobulin concentration was determined by extinction coefficient: absorbance at 280 nm of 1.4 equals 1.0 mg of IgG.

**APPLICATIONS** Centrifuge tube to remove product from lid. Optimal working dilutions should be determined experimentally by the investigator. Prepare working dilution immediately before use.

Western Blot 1:2,000 – 1:10,000

Immunoprecipitation 2 – 5 µg/mg lysate

Immunohistochemistry 1:100 – 1:500. Epitope retrieval with Tris-EDTA pH 9.0 is recommended for FFPE tissue sections.

**APPLICATION NOTES** Western blot of immunoprecipitates performed using Normal Pig Serum (Cat. No. S100-020), Goat anti-Rabbit Light Chain HRP Conjugate (Cat. No. A120-113P) and 4-20% SDS-PAGE (link to IP-western blot protocol in Additional Info section below).

Western blot of lysates performed using standard western blot reagents and 4-20% SDS-PAGE.

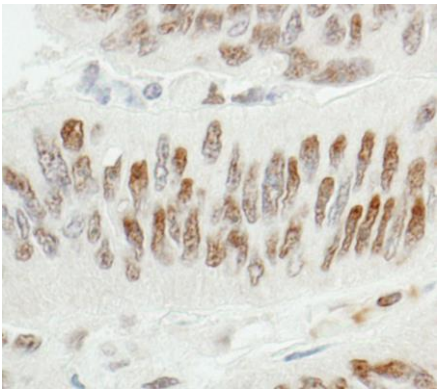
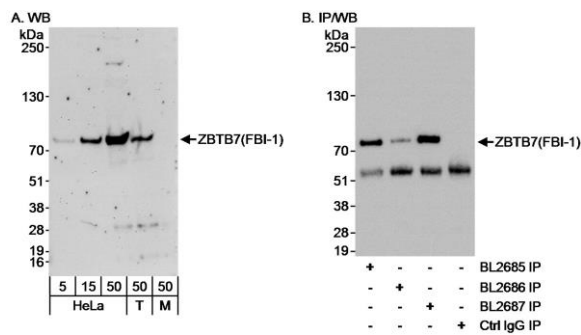
**IHC HUMAN CONTROLS** Breast Carcinoma, Colon Carcinoma, Prostate Carcinoma

**ADDITIONAL INFO** <https://www.bethyl.com/product/A300-549A>

Use the link above to view SDS, a current list of citations, and other product specific information.

IP-western blot protocol: [https://www.bethyl.com/content/protocol\\_IP\\_WB](https://www.bethyl.com/content/protocol_IP_WB)

This document certifies that this product has met all of the quality control standards defined by Bethyl Laboratories, Inc.  
Eric McIntush, PhD | Chief Scientific Officer Date: June 21, 2019



**Detection of human ZBTB7/FBI-1 by western blot and immunoprecipitation.** *Samples:* A) Whole cell lysate from HeLa (5, 15 and 50 µg), HEK293T (T; 50 µg) and NIH 3T3 (M; 50 µg) cells. B) Whole cell lysate (1 mg for IP; 1/4 of IP loaded) from HeLa cells. *Antibodies:* Affinity purified rabbit anti-ZBTB7/FBI-1 antibody A300-549A used at 0.04 µg/ml for WB (A and B) and at 3 µg/mg lysate for IP (B). ZBTB7/FBI-1 was also immunoprecipitated using rabbit antibodies A300-548A, and BL2686, which are to downstream epitopes on ZBTB7/FBI-1. *Detection:* Chemiluminescence with exposure times of 3 minutes (A) and 10 seconds (B).

**Detection of human ZBTB7/FBI-1 by immunohistochemistry.** *Sample:* FFPE section of human colon carcinoma. *Antibody:* Affinity purified rabbit anti-ZBTB7/FBI-1 (Cat. No. A300-549A Lot1) used at a dilution of 1:200 (1 µg/ml). *Detection:* DAB