

# CTCF Antibody

Rabbit Polyclonal

Antigen Affinity Purified

Catalog No. A300-542A

Lot No. A300-542A-1

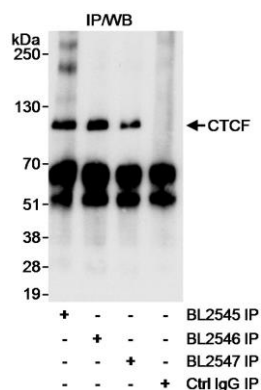
Protein ID NP\_006556.1

GeneID 10664



|                              |   |
|------------------------------|---|
| <b>APPLICATIONS</b>          | IP  |
| <b>SPECIES REACTIVITY</b>    | Human   |
| <b>PRESUMED REACTIVITY</b>   | Based on 100% sequence identity, this antibody is predicted to react with Rat   |
| <b>AMOUNT</b>                | 100 µl  |
| <b>CONCENTRATION</b>         | 1000 µg/ml  |
| <b>STORAGE/SHELF LIFE</b>    | 2 - 8° C / 1 year from date of receipt  |
| <b>PHYSICAL STATE</b>        | Liquid  |
| <b>BUFFER</b>                | Tris-citrate/phosphate buffer, pH 7 to 8 containing 0.09% Sodium Azide  |
| <b>ISOTYPE</b>               | IgG   |
| <b>ORIGIN</b>                | USA   |
| <b>PRODUCTION PROCEDURES</b> | <p>Antibody was affinity purified using an epitope specific to CTCF immobilized on solid support.</p> <p>The epitope recognized by A300-542A maps to a region between residues 150 and 200 of human CCCTC-binding factor using the numbering given in entry NP_006556.1 (GeneID 10664).</p> <p>Immunoglobulin concentration was determined by extinction coefficient: absorbance at 280 nm of 1.4 equals 1.0 mg of IgG.</p> |
| <b>APPLICATIONS</b>          | <p>Centrifuge tube to remove product from lid. Optimal working dilutions should be determined experimentally by the investigator. Prepare working dilution immediately before use.</p> <p>Western Blot                      Not recommended. Use rabbit anti-CTCF antibody A300-543A.</p> <p>Immunoprecipitation              2 - 5 µg/mg lysate</p>  |
| <b>APPLICATION NOTES</b>     | Western blot of immunoprecipitates performed using Normal Pig Serum (Cat. No. S100-020), Goat anti-Rabbit Light Chain HRP Conjugate (Cat. No. A120-113P) and 4-8% SDS-PAGE (link to IP-western blot protocol in Additional Info section below).   |
| <b>ADDITIONAL INFO</b>       | <p><a href="https://www.bethyl.com/product/A300-542A">https://www.bethyl.com/product/A300-542A</a></p> <p>Use the link above to view SDS, a current list of citations, and other product specific information. IP-western blot protocol: <a href="https://www.bethyl.com/content/protocol_IP_WB">https://www.bethyl.com/content/protocol_IP_WB</a></p>  |

This document certifies that this product has met all of the quality control standards defined by Bethyl Laboratories, Inc.  
Eric McIntush, PhD | Chief Scientific Officer  
Date: June 21, 2019



**immunoprecipitation of human CTCF.** *Samples:* Whole cell lysate (1 mg for IP; 1/4 of IP loaded/lane) from MCF-7 cells. *Antibodies:* Affinity purified rabbit anti-CTCF antibody BL2545 (Cat. No. A300-542A) used at 3  $\mu$ g/mg lysate for IP. Human CTCF was also immunoprecipitated using affinity purified rabbit anti-CTCF antibodies BL2546 (Cat. No. A300-543A) and BL2547 (Cat. No. A300-544A). CTCF was blotted using BL2546 at 0.03  $\mu$ g/ml. *Detection:* Chemiluminescence with exposure times of 10 seconds.