

# p400 Antibody

Rabbit Polyclonal

Antigen Affinity Purified Protein ID AAK97789.1  
Catalog No. A300-541A GeneID 57634  
Lot No. A300-541A-2



<b>APPLICATIONS</b>	WB, IP
<b>SPECIES REACTIVITY</b>	Human, Mouse
<b>PRESUMED REACTIVITY</b>	Based on 100% sequence identity, this antibody is predicted to react with Rat, Bovine, Horse, Guinea pig_10141, Pig, Orangutan, Monkey, Gorilla and Chimpanzee
<b>AMOUNT</b>	100 $\mu$ l
<b>CONCENTRATION</b>	200 $\mu$ g/ml
<b>STORAGE/SHELF LIFE</b>	2 - 8° C / 1 year from date of receipt
<b>PHYSICAL STATE</b>	Liquid
<b>BUFFER</b>	Tris-buffered Saline containing 0.1% BSA and 0.09% Sodium Azide
<b>ISOTYPE</b>	IgG
<b>ORIGIN</b>	USA
<b>PRODUCTION PROCEDURES</b>	Antibody was affinity purified using an epitope specific to p400 immobilized on solid support.  The epitope recognized by A300-541A maps to a region between residues 3075 and the C-terminus (residue 3124) of human E1A binding protein p400 using the numbering given in entry AAK97789.1 (GeneID 57634).

Immunoglobulin concentration was determined by extinction coefficient: absorbance at 280 nm of 1.4 equals 1.0 mg of IgG.

**APPLICATIONS** Centrifuge tube to remove product from lid. Optimal working dilutions should be determined experimentally by the investigator. Prepare working dilution immediately before use.

Western Blot 1:2,000 – 1:5,000

Immunoprecipitation 2 – 5  $\mu$ g/mg lysate

**APPLICATION NOTES** Western blot of immunoprecipitates performed using Normal Pig Serum (Cat. No. S100-020), Goat anti-Rabbit Light Chain HRP Conjugate (Cat. No. A120-113P) and 3-8% SDS-PAGE (link to IP-western blot protocol in Additional Info section below).

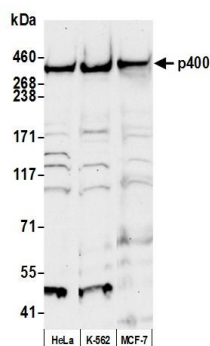
Western blot of lysates performed using standard western blot reagents and 3-8% SDS-PAGE.

**ADDITIONAL INFO** <https://www.bethyl.com/product/A300-541A>

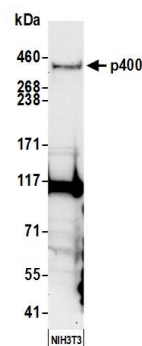
Use the link above to view SDS, a current list of citations, and other product specific information.

IP-western blot protocol: [https://www.bethyl.com/content/protocol\\_IP\\_WB](https://www.bethyl.com/content/protocol_IP_WB)

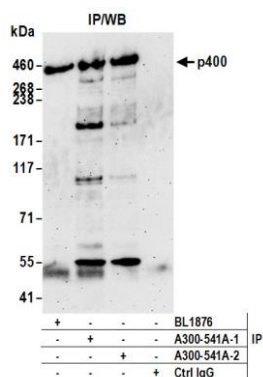
This document certifies that this product has met all of the quality control standards defined by Bethyl Laboratories, Inc.  
Eric McIntush, PhD | Chief Scientific Officer Date: June 24, 2019



**Detection of human p400 by western blot.** *Samples:* Whole cell lysate (50 µg) from HeLa, K-562, and MCF-7 cells prepared using NETN lysis buffer. *Antibody:* Affinity purified rabbit anti-p400 antibody A300-541A (lot A300-541A-2) used for WB at 0.4 µg/ml. *Detection:* Chemiluminescence with an exposure time of 30 seconds.



**Detection of mouse p400 by western blot.** *Samples:* Whole cell lysate (50 µg) from NIH 3T3 cells prepared using NETN lysis buffer. *Antibody:* Affinity purified rabbit anti-p400 antibody A300-541A (lot A300-541A-2) used for WB at 0.4 µg/ml. *Detection:* Chemiluminescence with an exposure time of 30 seconds.



**Detection of human p400 by western blot of immunoprecipitates.** *Samples:* Whole cell lysate (1.0 mg per IP reaction; 20% of IP loaded) from HeLa cells prepared using NETN lysis buffer. *Antibodies:* Affinity purified rabbit anti-p400 antibody A300-541A (lot A300-541A-2) used for IP at 6 µg per reaction. p400 was also immunoprecipitated by a previous lot of this antibody (lot A300-541A-1) and rabbit anti-p400 antibody BL1876. For blotting immunoprecipitated p400, A300-541A was used at 0.1 µg/ml. *Detection:* Chemiluminescence with an exposure time of 3 minutes.