

Pds5B Antibody

Rabbit Polyclonal

Antigen Affinity Purified	RefSeq ID	CAB69911.1
Catalog No. A300-538A	Uniprot ID	Q9NT15
Lot No. A300-538A-3	GeneID	23047

APPLICATIONS	WB, IP, IHC
SPECIES REACTIVITY	Human, Mouse
AMOUNT	100 µl
CONCENTRATION	200 µg/ml
STORAGE/SHELF LIFE	2 – 8°C / 1 year from date of receipt
PHYSICAL STATE	Liquid
BUFFER	Tris-buffered Saline containing 0.1% BSA and 0.09% Sodium Azide
ISOTYPE	IgG
ORIGIN	USA
PRODUCTION PROCEDURES	Antibody was affinity purified using an epitope specific to Pds5B immobilized on solid support.

The epitope recognized by A300-538A maps to a region between residue 1400 and the C-terminus (residue 1447) of human Precocious Dissociation of Sisters-5B using the numbering given in entry CAB69911.1 (GeneID 23047).

Immunoglobulin concentration was determined by extinction coefficient: absorbance at 280 nm of 1.4 equals 1.0 mg of IgG.

APPLICATIONS Centrifuge tube to remove product from lid. Optimal working dilutions should be determined experimentally by the investigator. Prepare working dilution immediately before use.

Western Blot 1:2,000 – 1:10,000

Immunoprecipitation 2 – 10 µg/mg lysate

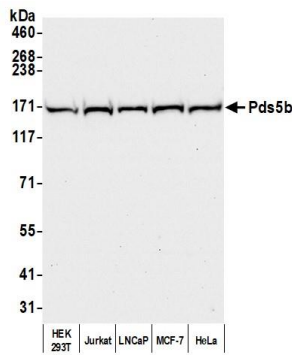
Immunohistochemistry 1:100 to 1:500. Epitope retrieval with citrate buffer pH6.0 is recommended for FFPE tissue sections.

IHC HUMAN CONTROLS Breast Carcinoma, Laryngeal Squamous Cell Carcinoma, Ovarian Carcinoma, Skin Basal Cell Carcinoma

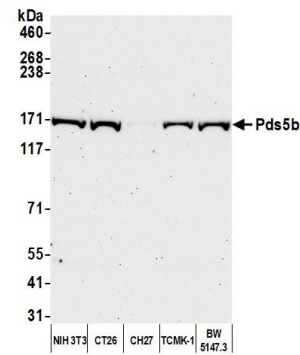
ADDITIONAL INFO <https://www.fortislife.com/p/A300-538A>

Use the link above to view SDS, a current list of citations, and other product specific information.

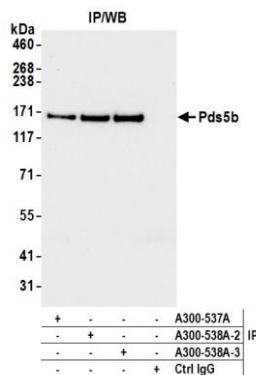
This document certifies that this product has met all of the quality control standards defined by Bethyl Laboratories, Inc.
Michael Spencer, PhD Date: November 15, 2022



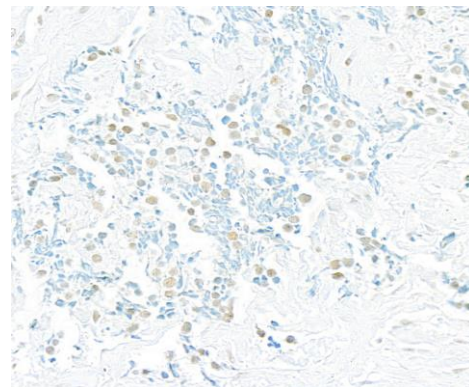
Detection of human Pds5b by western blot. *Samples:* Whole cell lysate (50 µg) from HEK293T, Jurkat, LNCaP, MCF-7, and HeLa cells prepared using NETN lysis buffer. *Antibody:* Affinity purified rabbit anti-Pds5b antibody (A300-538A lot 3) used for WB at 0.1 µg/ml. *Detection:* Chemiluminescence with an exposure time of 10 seconds.



Detection of mouse Pds5b by western blot. *Samples:* Whole cell lysate (50 µg) from NIH 3T3, CT26, CH27, TCMK-1, and BW5147.3 cells prepared using NETN lysis buffer. *Antibody:* Affinity purified rabbit anti-Pds5b antibody (A300-538A lot 3) used for WB at 0.04 µg/ml. *Detection:* Chemiluminescence with an exposure time of 75 seconds.



Detection of human Pds5b by western blot of immunoprecipitates. *Samples:* Whole cell lysate (1.0 mg per IP reaction; 20% of IP loaded) from HEK293T cells prepared using NETN lysis buffer. *Antibodies:* Affinity purified rabbit anti-Pds5b antibody (A300-538A lot 3) used for IP at 6 µg per reaction. Pds5b was also immunoprecipitated by a previous lot of this antibody (A300-538A lot 2) and a second antibody against a different epitope of Pds5b (A300-537A). For blotting immunoprecipitated Pds5b, A300-538A was used at 0.04 µg/ml. *Detection:* Chemiluminescence with an exposure time of 3 seconds.



Detection of human Pds5B by immunohistochemistry. *Sample:* FFPE section of human lung small cell carcinoma. *Antibody:* Affinity purified rabbit anti-Pds5B (A300-538A Lot 3) used at a dilution of 1:200 (1 µg/ml). *Detection:* DAB