

Pds5B Antibody

Rabbit Polyclonal

Antigen Affinity Purified Protein ID CAB69911.1
Catalog No. A300-537A GeneID 23047
Lot No. A300-537A-2



APPLICATIONS WB, IP, IHC, IHC-IF
SPECIES REACTIVITY Human, Mouse
AMOUNT 100 µl
CONCENTRATION 200 µg/ml
STORAGE/SHELF LIFE 2 – 8° C / 1 year from date of receipt
PHYSICAL STATE Liquid
BUFFER Tris-buffered Saline containing 0.1% BSA and 0.09% Sodium Azide
ISOTYPE IgG
ORIGIN USA
PRODUCTION PROCEDURES Antibody was affinity purified using an epitope specific to Pds5B immobilized on solid support.

The epitope recognized by A300-537A maps to a region between residues 1200 and 1250 of human Precocious Dissociation of Sisters-5B using the numbering given in entry CAB69911.1 (GeneID 23047).

Immunoglobulin concentration was determined by extinction coefficient: absorbance at 280 nm of 1.4 equals 1.0 mg of IgG.

APPLICATIONS Centrifuge tube to remove product from lid. Optimal working dilutions should be determined experimentally by the investigator. Prepare working dilution immediately before use.

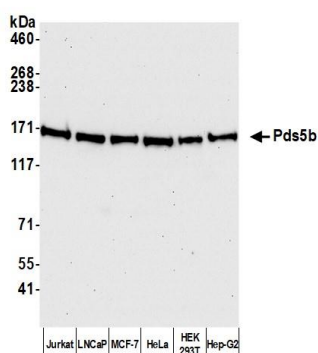
Western Blot	1:2,000 – 1:10,000
Immunoprecipitation	2 – 10 µg/mg lysate
Immunohistochemistry	1:100 – 1:500. Epitope retrieval with citrate buffer pH 6.0 is recommended for FFPE tissue sections.
Immunofluorescence (IHC)	1:100 – 1:500. Epitope retrieval with citrate buffer pH 6.0 is recommended for FFPE tissue sections.

IHC HUMAN CONTROLS Breast Carcinoma, Ovarian Carcinoma, Prostate Carcinoma, Skin Basal Cell Carcinoma

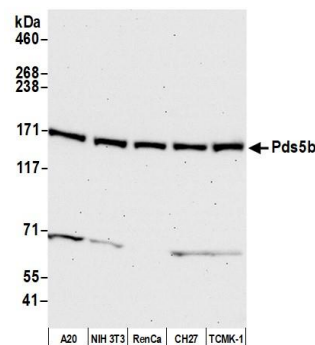
IHC MOUSE CONTROLS Squamous Cell Carcinoma

ADDITIONAL INFO <https://www.bethyl.com/product/A300-537A>
Use the link above to view SDS, a current list of citations, and other product specific information.
IP-western blot protocol: https://www.bethyl.com/content/protocol_IP_WB

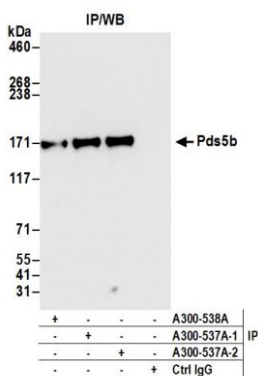
This document certifies that this product has met all of the quality control standards defined by Bethyl Laboratories, Inc.
Eric McIntush, PhD | Chief Scientific Officer Date: June 8, 2020



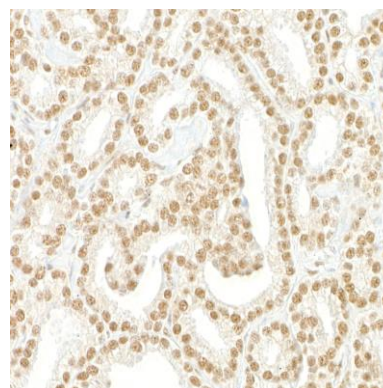
Detection of human Pds5b by western blot. *Samples:* Whole cell lysate (50 µg) from Jurkat, LNCaP, MCF-7, HeLa, HEK293T, and Hep-G2 cells prepared using NETN lysis buffer. *Antibody:* Affinity purified rabbit anti-Pds5b antibody A300-537A (lot A300-537A-2) used for WB at 0.04 µg/ml. *Detection:* Chemiluminescence with an exposure time of 30 seconds.



Detection of mouse Pds5b by western blot. *Samples:* Whole cell lysate (50 µg) from A20, NIH 3T3, RenCa, CH27, and TCMK-1 cells prepared using NETN lysis buffer. *Antibody:* Affinity purified rabbit anti-Pds5b antibody A300-537A (lot A300-537A-2) used for WB at 0.04 µg/ml. *Detection:* Chemiluminescence with an exposure time of 30 seconds.



Detection of human Pds5b by western blot of immunoprecipitates. *Samples:* Whole cell lysate (1.0 mg per IP reaction; 20% of IP loaded) from HEK293T cells prepared using NETN lysis buffer. *Antibodies:* Affinity purified rabbit anti-Pds5b antibody A300-537A (lot A300-537A-2) used for IP at 6 µg per reaction. Pds5b was also immunoprecipitated by a previous lot of this antibody (lot A300-537A-1) and rabbit anti-Pds5b antibody A300-538A. For blotting immunoprecipitated Pds5b, A300-537A was used at 0.04 µg/ml. *Detection:* Chemiluminescence with an exposure time of 3 seconds.



Detection of human Pds5B by immunohistochemistry. *Sample:* FFPE sections of human prostate carcinoma. *Antibody:* Affinity purified rabbit anti-Pds5B (Cat. No. A300-537A Lot2) used at a dilution of 1:200 (1 µg/ml). *Detection:* DAB