

DOCK9 Antibody

Rabbit Polyclonal

Antigen Affinity Purified

Protein ID NP_056111.1

Catalog No. A300-531A

GeneID 23348

Lot No. A300-531A-1



APPLICATIONS	IP
SPECIES REACTIVITY	Human
AMOUNT	100 µl
CONCENTRATION	1000 µg/ml
STORAGE/SHELF LIFE	2 – 8° C / 1 year from date of receipt
PHYSICAL STATE	Liquid
BUFFER	Tris-citrate/phosphate buffer, pH 7 to 8 containing 0.09% Sodium Azide
ISOTYPE	IgG
ORIGIN	USA
PRODUCTION PROCEDURES	Antibody was affinity purified using an epitope specific to DOCK9 immobilized on solid support.

The epitope recognized by A300-531A maps to a region between residues 1250 and 1300 of human Deducator of Cytokinesis 9 using the numbering given in entry NP_056111.1 (GeneID 23348).

Immunoglobulin concentration was determined by extinction coefficient: absorbance at 280 nm of 1.4 equals 1.0 mg of IgG.

APPLICATIONS Centrifuge tube to remove product from lid. Optimal working dilutions should be determined experimentally by the investigator. Prepare working dilution immediately before use.

Western Blot Not recommended. Use rabbit anti-DOCK9 antibody A300-530A or A300-532A.

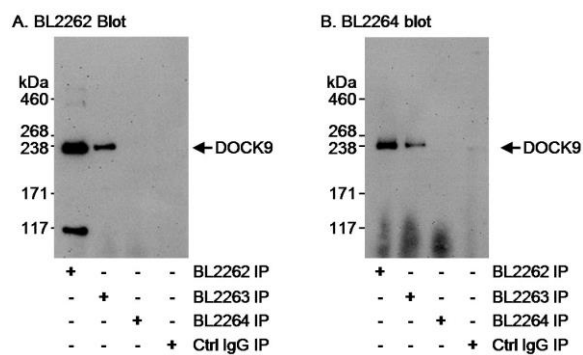
Immunoprecipitation 2 – 5 µg/mg lysate

APPLICATION NOTES Western blot of immunoprecipitates performed using Normal Pig Serum (Cat. No. S100-020), Goat anti-Rabbit Light Chain HRP Conjugate (Cat. No. A120-113P) and 4-8% SDS-PAGE (link to IP-western blot protocol in Additional Info section below).

ADDITIONAL INFO <https://www.bethyl.com/product/A300-531A>

Use the link above to view SDS, a current list of citations, and other product specific information. IP-western blot protocol: https://www.bethyl.com/content/protocol_IP_WB

This document certifies that this product has met all of the quality control standards defined by Bethyl Laboratories, Inc.
Eric McIntush, PhD | Chief Scientific Officer Date: June 21, 2019



Detection of human DOCK9 by western blot of immunoprecipitates. *Samples:* Whole cell lysate (1 mg for IP) from HeLa cells. *Antibodies:* DOCK9 was immunoprecipitated by rabbit anti-DOCK9 antibodies BL2262 (Cat. No. A300-530A) and BL2263 (Cat. No. A300-531A) but not by BL2264 (Cat. No. A300-532A) using each antibody at 3 $\mu\text{g}/\text{mg}$ lysate. immunoprecipitates DOCK9 was blotted using affinity purified rabbit anti-DOCK9 antibody BL2262 (Cat. No. A300-530A; 0.04 $\mu\text{g}/\text{ml}$; A) and BL2264 (Cat. No. A300-532A; 1 $\mu\text{g}/\text{ml}$; B). *Detection:* Chemiluminescence with an exposure time of 3 minutes (A and B).