

DHX36 Antibody

Rabbit Polyclonal

Antigen Affinity Purified

Protein ID NP_065916.1

Catalog No. A300-525A

GeneID 170506

Lot No. A300-525A-2



APPLICATIONS	WB, IP
SPECIES REACTIVITY	Human, Mouse
AMOUNT	100 µl
CONCENTRATION	1000 µg/ml
STORAGE/SHELF LIFE	2 - 8° C / 1 year from date of receipt
PHYSICAL STATE	Liquid
BUFFER	Tris-citrate/phosphate buffer, pH 7 to 8 containing 0.09% Sodium Azide
ISOTYPE	IgG
ORIGIN	USA
PRODUCTION PROCEDURES	Antibody was affinity purified using an epitope specific to DHX36 immobilized on solid support.

The epitope recognized by A300-525A maps to a region between residue 950 and the C-terminus (residue 1008) of human DEAH (Asp-Glu-Ala-His) Box Polypeptide 36 using the numbering given in entry NP_065916.1 (GeneID 170506).

Immunoglobulin concentration was determined by extinction coefficient: absorbance at 280 nm of 1.4 equals 1.0 mg of IgG.

APPLICATIONS Centrifuge tube to remove product from lid. Optimal working dilutions should be determined experimentally by the investigator. Prepare working dilution immediately before use.

Western Blot 1:1,000 - 1:5,000

Immunoprecipitation 2 - 10 µg/mg lysate

APPLICATION NOTES Western blot of immunoprecipitates performed using Normal Pig Serum (Cat. No. S100-020), Goat anti-Rabbit Light Chain HRP Conjugate (Cat. No. A120-113P) and 4-8% SDS-PAGE (link to IP-western blot protocol in Additional Info section below).

Western blot of lysates performed using standard western blot reagents and 4-8% SDS-PAGE.

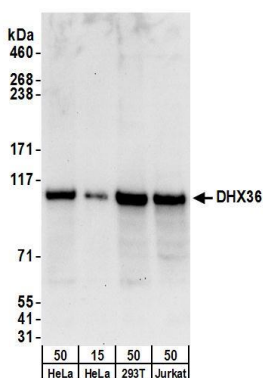
ADDITIONAL INFO

<https://www.bethyl.com/product/A300-525A>

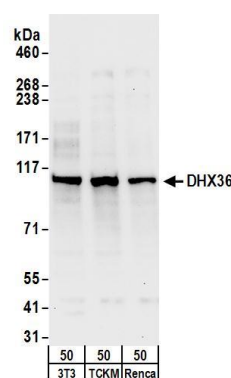
Use the link above to view SDS, a current list of citations, and other product specific information.

IP-western blot protocol: https://www.bethyl.com/content/protocol_IP_WB

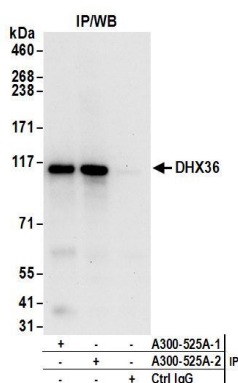
This document certifies that this product has met all of the quality control standards defined by Bethyl Laboratories, Inc.
Eric McIntush, PhD | Chief Scientific Officer Date: June 21, 2019



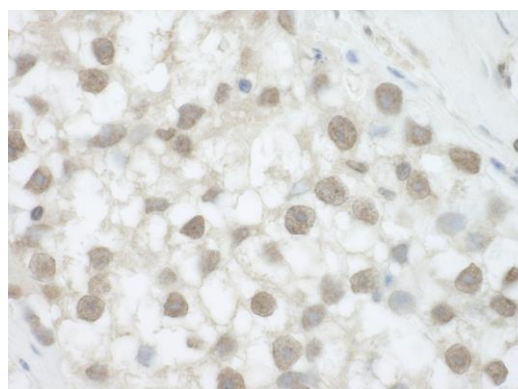
Detection of human DHX36 by western blot. *Samples:* Whole cell lysate from HeLa (15 and 50 µg), HEK293T (50 µg) and Jurkat (50µg) cells. *Antibodies:* Affinity purified rabbit anti-DHX36 antibody A300-525A (lot A300-525A-2) used for WB at 0.4 µg/ml. *Detection:* Chemiluminescence with an exposure time of 30 seconds.



Detection of mouse DHX36 by western blot. *Samples:* Whole cell lysate from NIH 3T3 (50µg), TCKM (50µg) and Renca (50µg) cells. *Antibodies:* Affinity purified rabbit anti-DHX36 antibody A300-525A (lot A300-525A-2) used for WB at 1 µg/ml. *Detection:* Chemiluminescence with an exposure time of 30 seconds.



Detection of human DHX36 by western blot of immunoprecipitates. *Samples:* Whole cell lysate (1 mg for IP; 20% of IP loaded) from HeLa cells. *Antibodies:* Affinity purified rabbit anti-DHX36 antibody A300-525A (lot A300-525A-2) used for IP at 6 µg/mg lysate. DHX36 was also immunoprecipitated by a previous lot (A300-525A-1) of this antibody. For blotting immunoprecipitated DHX36, A300-525A was used at 1 µg/ml. *Detection:* Chemiluminescence with an exposure time of 30 seconds.



Detection of human DHX36 by immunohistochemistry. *Sample:* FFPE section of human testicular seminoma. *Antibody:* Affinity purified rabbit anti-DHX36 (Cat. No. A300-525A Lot2) used at a dilution of 1:1,000 (1 µg/ml). *Detection:* DAB